

**LDF Implementation Plan and  
Local Investment Plan**

**Bridgnorth  
& surrounding  
area  
Place Plan**

**Version 17  
06/01/2011**

# **CONTENTS**

## **1. Introduction**

## **2. Bridgnorth place plan**

- 2.1 Vision for Bridgnorth
- 2.2 Bridgnorth Profile- local evidence
- 2.3 Community led planning in Bridgnorth
- 2.4 Bridgnorth Delivery Framework

## **3. Community Hubs place plan**

- 3.1 Vision for
  - Ditton Priors
- 3.2 Community Hub profiles
- 3.3 Community led planning in the Community Hubs
- 3.4 Delivery Framework for the Community Hubs

## **4. Community Clusters place plan**

## **5. Rural Hinterland place plan**

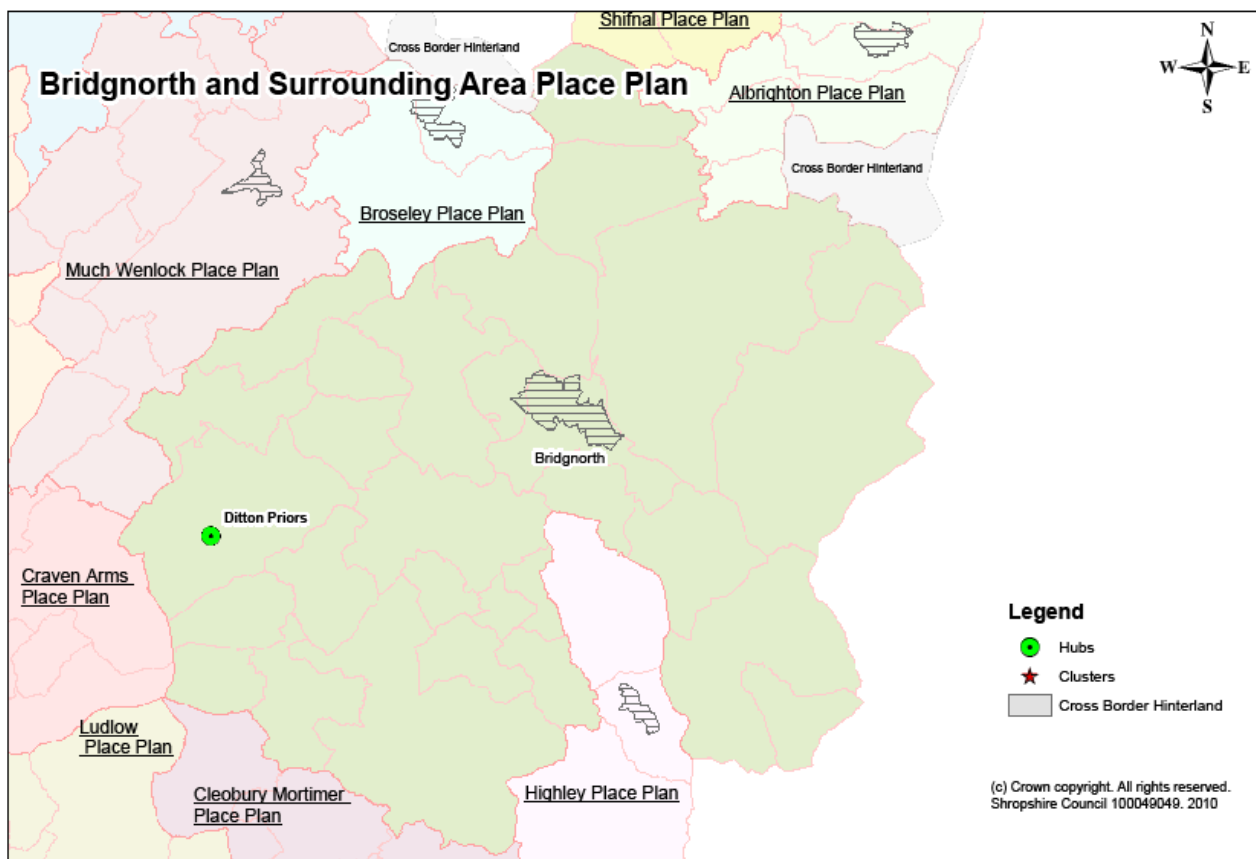
- 5.1 Vision for the Rural Hinterland
- 5.2 Rural Hinterland profile
- 5.3 Community led planning in the Rural Hinterland
- 5.4 Delivery framework for the Rural Hinterland

### ***Appendix 1- Bridgnorth Town Profile***

# 1. INTRODUCTION

## *What is this document?*

- 1.1 This document is the Place Plan for *Bridgnorth and its surrounding area*. It summarises the infrastructure and investment requirements needed to deliver the community vision and aspirations for Bridgnorth, its Community Hubs, Clusters and surrounding Rural Hinterland.
- 1.2 It covers the areas shown in the map, below, which is based on the perceived area of influence for the main settlement, Bridgnorth, as identified by Bridgnorth Town Council.



- 1.3 However, whilst this Place Plan covers the area identified, it is important to note that it does not work in isolation, but is part of a set of 18 interlinked Place Plans, covering Shropshire's main settlements and their hinterlands. The above map provides an overview of the Place Plans bordering the Bridgnorth locality, in addition to any perceived cross border areas of influence, which lie outside Shropshire and provide a focus for cross border working with neighbouring local authorities and partners.
- 1.4 Within Bridgnorth and its surrounding area, one Community Hub has currently been put forward by the local community (via town and parish

councils in the Bridgnorth locality), as part of the Local Development Framework. This Community Hub is identified on the map and is defined as a settlement where limited development is needed to ensure that the local community becomes more sustainable. As such, development in this settlement will be based on community benefit, such as the provision of local facilities, economic development or housing for local needs. Community Clusters have the same role as Hubs, but comprise a collection of networked settlements, which together require limited further development to improve sustainability. As no Clusters have been identified in this locality, the remaining area is defined as countryside, where further development will be strictly controlled and only allowed in exceptional circumstances.

- 1.5 However, there is an ongoing opportunity for communities to 'opt in' as either a Hub or a Cluster at a later stage in the Local Development Framework Plan period (2006-2026), for example through a review of local parish plans. The Council will therefore continue discussions with the local community to identify the community benefits that can be delivered through development.
- 1.6 In identifying the local infrastructure and investment requirements for Bridgnorth and its surrounding area, extensive discussions have been undertaken with relevant town and parish councils, in addition to local infrastructure and service providers. This is part of an ongoing process of community led working, which will ensure that the Bridgnorth and surrounding area Place Plan is kept up to date and continually reflects local needs and priorities.
- 1.7 Whilst this initial version of the Bridgnorth and surrounding area Place Plan primarily focuses on the investment requirements for Bridgnorth, work is ongoing to identify the infrastructure and investment requirements for the surrounding area. Detailed discussions with parish councils within the Bridgnorth locality are therefore ongoing and will inform the updated version of the Bridgnorth Place Plan in due course.
- 1.8 The Place Plans form part of the Shropshire Local Development Framework (LDF) Implementation Plan and the Local Investment Plan. As outlined in figure 1, this package of documents is aimed at ensuring the delivery of sustainable places in Shropshire.
- 1.9 The LDF Implementation Plan outlines all the infrastructure requirements which are needed to support the level and location of development for Shropshire, as outlined in the Core Strategy. It covers physical infrastructure (transport, energy, water, waste, minerals and ICT/digital), economic infrastructure (regeneration, business growth and employment, skills training) social infrastructure (education, health and community facilities) and green infrastructure (open spaces, recreation and sporting facilities and green public realm) requirements.
- 1.10 The Local Investment Plan (LIP) will help the Council and its partners to work together to coordinate various funding streams.

1.11 The 18 Place Plans provide detailed information on a place by place basis. They identify the vision for a specific place and the investment needed to deliver that vision. As such, they seek to bring together “bottom up” priorities, originating from community aspirations with “top down” schemes and actions, originating from large organisations such as Shropshire Council. They will be used to assist in prioritising which are the most important schemes within a particular place, given limited resources, and will help provide a delivery programme which will create and maintain Bridgnorth and its surrounding areas as sustainable communities.

### ***How is this document structured?***

1.12 As the Place Plan for Bridgnorth and its surrounding area, this document identifies and divides the infrastructure and investment requirements for Bridgnorth, its Community Hubs, Clusters and Rural Hinterland, into the following themes:

- Housing and cohesive, sustainable communities
- Economic investment and opportunity
- Social and community infrastructure
- Environment and climate change
- Transport and accessibility

1.13 Each infrastructure requirement has been identified according to whether it is considered to be ‘critical’, ‘priority’ or ‘key’ and colour coded according to whether there are any known barriers to it’s delivery.

1.14 Infrastructure schemes which have been coloured **red** are known to have important barriers which are preventing their delivery, such as a lack of funding. Infrastructure schemes which have been coloured **amber** are known to have some barriers to delivery such as an incomplete set of funding or no known timescale for delivery. Schemes that are coloured **green** have no known barriers to delivery and therefore have identified partners, funding and timescales for delivery.

1.15 Critical infrastructure is that which is fundamental to development, such as electricity, water and road access, without which development can simply not take place. Priority infrastructure is that, which for a given point in time has been identified as a particular priority, in order to meet a specific need or requirement. Key infrastructure reflects the full range of infrastructure and investment needs that are required to create and maintain places as sustainable communities.

### ***How will this document be used to deliver sustainable places in Shropshire?***

1.16 Through ongoing engagement with the local community, this plan seeks to record and convey the priorities for Bridgnorth and its surrounding area to partners who are in a position to invest money and deliver schemes to meet local needs.

1.17 The Plan will also be used to inform what contributions towards local infrastructure will be sought from development within Bridgnorth and its surrounding area, through the Community Infrastructure Levy and developer contributions, to meet community priorities.

1.18 In summary, this Place Plan has the following roles:

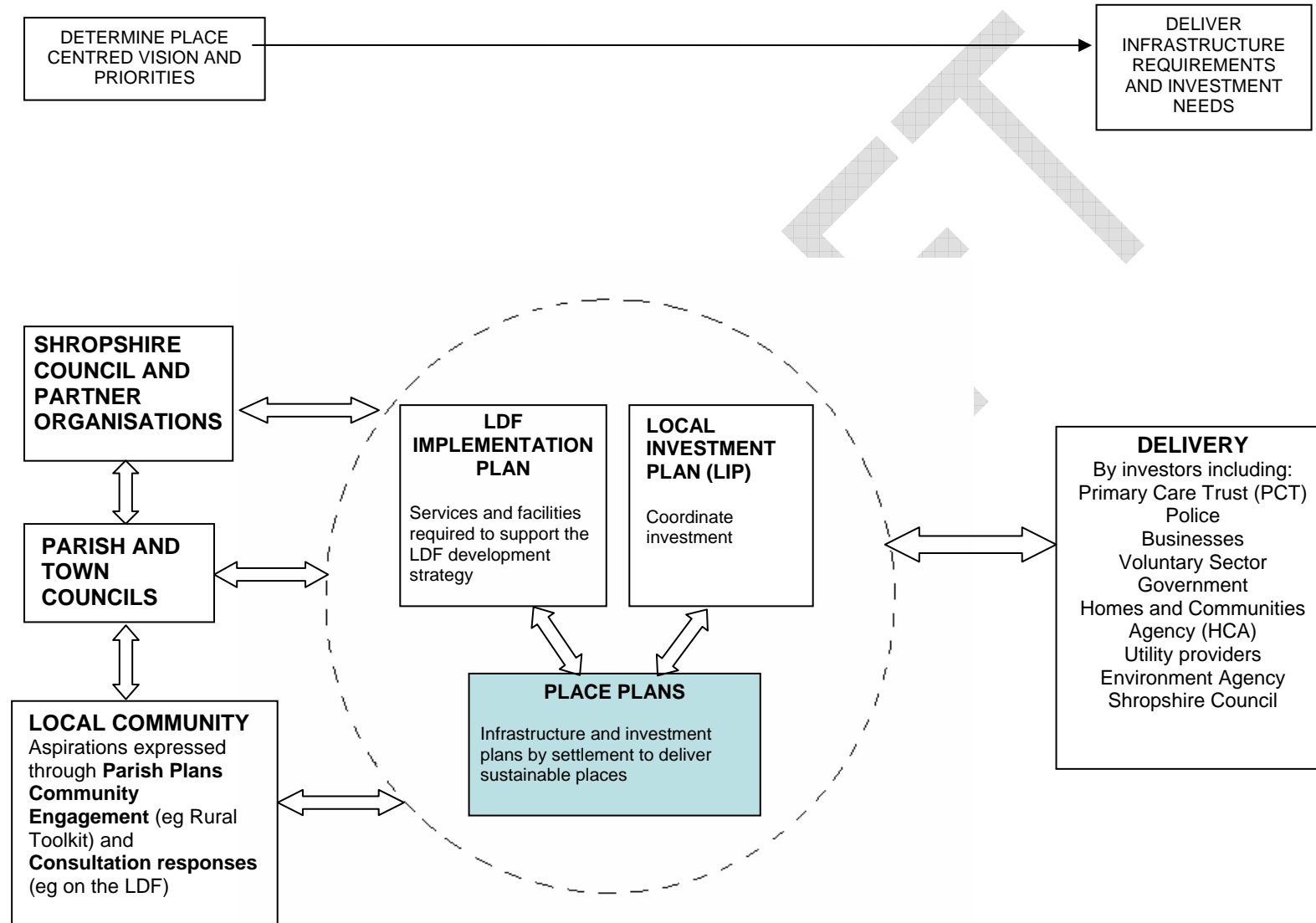
#### DECISION-MAKING PROCESS

- Provides a mechanism for taking decisions through the appropriate channels

#### CONTENT

- Provides details of how the vision will be delivered in *Bridgnorth and its Community Hubs, Clusters and the Rural Hinterland*.
- Records and conveys the agreed shared priorities to partners who are in a position to invest and deliver;
- Identifies priorities for contributions towards local infrastructure from development, through the Community Infrastructure Levy / tariff and through other external funding sources.

**Figure 1: Delivering sustainable places**



## 2. BRIDGNORTH PLACE PLAN

### 2.1 VISION FOR BRIDGNORTH

The vision for *Bridgnorth* is found in the Core Strategy Policy CS3, and is as follows:

***Bridgnorth will provide a focus for development within the constraints of its location on the edge of the Green Belt and on the River Severn.  
Core Strategy Policy CS3***

### 2.2 BRIDGNORTH PROFILE

A town profile for Bridgnorth is provided in Appendix 1. This provides an overview of the social, economic and environmental characteristics of Bridgnorth, based on the latest available local evidence.

### 2.3 COMMUNITY LED PLANNING IN BRIDGNORTH

#### **Community Led Plans**

##### *Bridgnorth Town Plan*

The Bridgnorth Town Plan Steering Group has been in place since October 2009. They are currently circulating a questionnaire to all households, including those in surrounding parishes, to inform the development of a Town Plan.

#### **Local Joint Committee**

Bridgnorth is located within the Bridgnorth, Worfield, Alverley and Claverley Local Joint Committee Area. The following needs and priorities have been raised by the local community as part of Local Joint Committee meetings:

##### *Bridgnorth, Worfield, Alveley and Claverley Local Joint Committee*

- Road safety, speeding and HGVs
- Police and community safety
- Streetscene and litter – Keep Britain Tidy pilot Scheme
- Traffic management for events
- The re-opening of the operating theatre at Bridgnorth Hospital
- Knotweed in the river
- Correct use of Byways and footpaths.

#### **Other Community Consultations**

##### **Local Development Framework Site Allocations and Management of Development DPD (SAMDev) – Issues and Options Consultation (April-June 2010)**

*Bridgnorth Town Council representations on the SAMDev*

(Representation reference no SAMDEV DPD/04IOP/06116/00001)

- Greater emphasis on the needs of local people and young people
- Retention of young people in the town
- Appropriate housing that meets the needs of the young
- Affordable housing and
- Employment opportunities should match the number of dwellings being built
- Land be set aside for employment and the encouragement of new businesses to locate in the area

### **Investing in Shropshire's Future- Local Infrastructure and Investment Workshop with Bridgnorth Town Council (20<sup>th</sup> September 2010)**

- Lack of local employment opportunities with a lot of the residents commuting.
- Rumours of the relocation of Novelis, a major employer in the town.
- Rental costs on properties on the town centre are too high for local businesses.
- Lack of suitable accommodation for tourists, there is a dominance of smaller establishments but nothing large or named.
- The Bridgnorth theatre 'Theatre on the Steps' is a good asset for the town but has poor access. There is no disabled access and older people find the steps difficult.
- The river and the nearby pathways are underused. There is an existing public right of way on the west of the River leading to the Severn Park which could be made more of.
- The Severn Way long distance path to the western edge of the river is poorly advertised.
- Improvements to the leisure centre needed.
- Transport links are poor with no railway station and roads to Shrewsbury, Kidderminster and Stourbridge being of poor quality.
- Traffic problems when commuters travelling home.
- Lack of parking in the town centre, particularly for coaches.
- A lack of affordable housing.

### **Bridgnorth Community Toolkit Event – 4<sup>th</sup> November 2010**

The following activities, facilities, services and infrastructure were considered to be the most important community assets by the event attendees:

#### Activities:

- Arts and heritage events
- Children and family activities
- Youth groups and clubs

#### Facilities:

- Parking
- Places of worship
- Youth shelter or pod

#### Services:

- Learning and training opportunities
- Police/ emergency services
- Toilets

### Infrastructure:

- Broadband speed and connectivity
- Job opportunities
- Tourism and heritage infrastructure

The following points were raised by members of the community as ideas for projects to revitalise the town:

### The River

- Enhance quayside
- Navigation in the winter. Which will provide jobs and tourist dev.
- Safe storage for cyclists – visitors on riverside. Route 45!
- Riverside maintenance and works
- Hydro electricity generation in the river (Street Lights)

### Shops & Services

- One half of High Street to have a high level translucent roof, set higher than eaves of adjacent buildings, for access. This would establish the only such mall in the country
- Low Town where half of Bridgnorth reside – need outreach services/doctors/chemists/banks/etc.
- Chemist for Low Town
- Information board/map at every car park entrance showing where other car parks are and toilets, hospital, police
- Park and Ride from Tasley
- More bus shelters
- Better public toilets
- Good toilet facilities in Severn Park Low Town for visitors parking cars, playing football, kids playground
- Smaller sweepers for street cleansing

### Leisure Facilities

- More sports pitches or refurbish existing sports facilities
- Replacement leisure centre (open on Bank Holidays)
- Assist dry bar/youth club to open more often

### Development

- Crematorium
- Youth centre in Low Town
- Assist new day club/ drop in centre
- Tainter Hill (? owned by Apley Estate) use as open space and landscaped (between Hollybush Road and Listley Street)
- Severn Park and Rugby Club: Joint clubhouse and visitor centre and coffee bar at the top of the park by the entrance and the boundary with the Rugby Club
- 40/50 bed hotel inc parking
- Buy land and give to company to build a multi storey (facilitate)
- Build a floor in Castle Hall and make office space
- More use for the Castle Hall
- Refurb and repair St James Hall

*The following idea was received after the event:*

A north-south bypass (A442), commencing at the bottom of Newton Bank and finishing at the end of the old Worcester Road. All the road is already in existence but obviously the civil engineers would have to do a great deal of work to bring it all up to standard. We would also have to ignore the (EU) Brussels obsession that only East West roads can be built

Full information and feedback from the Bridgnorth Toolkit event is available at:

(<http://www.shropshire.gov.uk/factsfigures.nsf/open/C6BE79E370240015802577760045C7C5>)

DRAFT

## 2.4 INFRASTRUCTURE AND INVESTMENT DELIVERY FRAMEWORK FOR BRIDGNORTH

Infrastructure or investment requirement and opportunities	Critical Priority or Key	Lead delivery partner	Other partners	Cost	Funding secured	Funding gap	Timescale for delivery	Potential funding sources	Notes
<b>Housing and cohesive, sustainable communities</b>									
Affordable housing provision	PRIORITY	Shropshire Council  (Development Services-Strategy and Development)	Developers  Registered Providers  Homes & Communities Agency  Landowners  Town & Parish Councils				2010/11 to 2013/14	Homes & Communities Agency Grant  Shropshire Council capital programme  Registered Providers  Developer cross-subsidy  Developer cash contributions	33% of all new housing in Shropshire will be affordable housing, delivered through appropriate % of open market housing developments linked to: <ul style="list-style-type: none"> <li>100% affordable “exceptions sites”</li> <li>better use of empty properties</li> </ul> Mixed site at Stourbridge Road, Bridgnorth. A scheme for 106 residential units has planning permission but is being re-submitted by the developers as a smaller residential development of 62 units alongside some potential commercial usage. Final scheme will still be required to

Infrastructure or investment requirement and opportunities	Critical Priority or Key	Lead delivery partner	Other partners	Cost	Funding secured	Funding gap	Timescale for delivery	Potential funding sources	Notes
									<p>provide an appropriate % of affordable housing in accordance with prevailing policy and guidance.</p> <p>Delivery in this market town area includes small scale exceptions sites in the rural hinterland, including opportunistic “build your own affordable home” sites.</p>
Housing for vulnerable people	PRIORITY	Shropshire Council  (Community Services-Housing Services)	Registered Providers/ Specialist Providers				Ongoing	Supporting People Funding/ Private investment/ Homes & Communities Agency Grant	Includes provision for the frail and those with specialist needs eg. the very elderly; people requiring supported living such as those with dementia/ health difficulties/ learning disabilities; gypsies and travellers; victims of domestic violence, prevention of homelessness, move on accommodation from

Infrastructure or investment requirement and opportunities	Critical Priority or Key	Lead delivery partner	Other partners	Cost	Funding secured	Funding gap	Timescale for delivery	Potential funding sources	Notes
									supported housing, etc.
Improving and adapting existing housing	KEY	Shropshire Council / Registered Providers / Home owners  (Community Services- Housing Services)	Keep Shropshire Warm / Developers	Countywide: £6.5 million for social housing; £951,000 for private sector; £2.6 million for disabled facilities grants			2010-2011	CLG grant / Shropshire Council budget / Regional Housing Board	Includes: <ul style="list-style-type: none"> <li>energy efficiency to reduce carbon emissions and tackle fuel poverty;</li> <li>upgrading social housing to meet the Decent Homes standard;</li> <li>adaptations to meet changing needs, including Disabled facilities grants;</li> <li>bringing empty homes back into use.</li> </ul>
<b>Economic investment and opportunity</b>									
Market Towns Revitalisation Programme – Larger Market Towns Capital Programme	KEY	Shropshire Council  (Development Services- Economic Development)	Local businesses, residents, investors	£450,000	£450,000	None	2010-2015	Shropshire Council capital programme. Match funding from other sources will be explored,	Programme to support a range of capital projects which meet Market Town Revitalisation Programme objectives. Possible projects include Stanley Lane

Infrastructure or investment requirement and opportunities	Critical Priority or Key	Lead delivery partner	Other partners	Cost	Funding secured	Funding gap	Timescale for delivery	Potential funding sources	Notes
								including LJC funding.	Business Park, Bridgnorth Riverside Centre, Tasley Close environmental improvements, East Castle Street environmental improvements, Astley Abbots footpath provision, St Leonard's Church, St James's Church Hall
Chartwell Business Park	PRIORITY	Private Sector, Shropshire Council,  (Development Services-Economic Development)		£995,000	£995,000	None	2009-2011	Shropshire Council capital programme	Currently under construction
Rural Enterprise Centre Chartwell Business Park	KEY	Private Sector	Shropshire Council					Regional Growth Fund, Private Sector	Implementation of scheme depends on availability of funds
Council offices West Gate	KEY	Shropshire Council  (Development Services-Economic Development)					aspirational	Developer contributions	Opportunities for redevelopment and provision of One Stop Shop in Town Centre

Infrastructure or investment requirement and opportunities	Critical Priority or Key	Lead delivery partner	Other partners	Cost	Funding secured	Funding gap	Timescale for delivery	Potential funding sources	Notes
Business workshops Improvement programme	KEY	Shropshire Council (Development Services-Economic Development)	Private Sector	£1m			2010-2012	Landowners local businesses investors	Feasibility study for possible upgrading of Stanley Lane workshops complete.
Support for business start up and business growth	PRIORITY	Shropshire Council  (Development Services-Economic Development)	Business Link, Federation of Small Businesses	£320,000 (countywide)			2009-2011	Shropshire Council capital programme	Delivered through the Shropshire Business Enterprise Grants, supports retail business start up and growth. £40,000 remains in the budget. Other funding being explored.
Marketing rural Shropshire as a tourism destination	KEY	Shropshire Council  (Development Services-Economic Development)	Destination Management Partnership, including Telford and Wrekin, Bridgnorth and District Tourism Association, Town Council	£150,000 (countywide)			2009-2012	RDPE	Strategic support for tourism marketing and infrastructure.  The Town Council believes there are tourist assets where marketing and investment would help e.g. river walks, use of river, theatre, funicular railway, shops and restaurants. There is also a tunnel underneath the town which could be opened as a tourist attraction.

Infrastructure or investment requirement and opportunities	Critical Priority or Key	Lead delivery partner	Other partners	Cost	Funding secured	Funding gap	Timescale for delivery	Potential funding sources	Notes
Facilitation of ICT /broadband technologies	KEY	BT	Shropshire Council						The expansion of the broadband digital network is an issue throughout Shropshire because of its rural nature.
<b>Social and community infrastructure</b>									
Developer contribution for sports provision	KEY	Shropshire Council  (Community Services-Culture and Leisure)		£90,000	N/A	N/A	Payment due when 50 homes occupied	Developer contribution	Developer contribution in relation to land at Wenlock Road. Funds awaited from contractor.
Developer contribution for maintenance of open space land	KEY	Shropshire Council  (Community Services-Culture and Leisure)		£247,500	N/A	N/A		Developer contribution	Developer contribution in relation to land at Wenlock Road. Funds awaited from contractor.
Developer contribution for improvement of play space facilities and landscaping	KEY	Shropshire Council  (Community Services-Culture and Leisure)	Bridgnorth Town Council	£17,820	N/A	N/A		Developer contribution	Developer contribution in relation to 44, Ludlow Road. Funds awaited from contractor.

Infrastructure or investment requirement and opportunities	Critical Priority or Key	Lead delivery partner	Other partners	Cost	Funding secured	Funding gap	Timescale for delivery	Potential funding sources	Notes
Developer contribution for public art	KEY	Shropshire Council  (Community Services- Culture and Leisure)		£10,000	N/A	N/A	No time limit	Developer contribution	Developer contribution in relation to land at the Smithfield – 04/0919. Funds awaited from contractor.
Replacement police sections station	KEY	West Mercia Police	Developers / Shropshire Council	£4 million			5-10 years	West Mercia Police and developer contributions	New sections station to be developed in conjunction with new housing development in Bridgnorth.
Review of primary educational facilities to ensure sufficient school places	PRIORITY	Shropshire Council  (Education)	Developers	Dependent upon extent and location of development			Dependent upon outline of full planning permissions and developer's timescales	Developer contributions, Primary Capital Programme	An initial assessment has identified that there are unfilled primary school places in this area and that the existing primary education infrastructure can be expanded to allow for further additional provision. Beyond this, any additional housing would potentially require a new school and/or new school site to be provided. The normal position will be that an assessment of school

Infrastructure or investment requirement and opportunities	Critical Priority or Key	Lead delivery partner	Other partners	Cost	Funding secured	Funding gap	Timescale for delivery	Potential funding sources	Notes
									place provision will be made before planning permission is granted to decide whether the existing school infrastructure is able to cope and whether or not developer contributions are required.
Review of secondary educational facilities to ensure sufficient school places	PRIORITY	Shropshire Council (Education)	Developers	Dependent upon extent and location of development			2015-2026	Developer contributions, Primary Capital Programme	In general, secondary schools will have more capacity to absorb additional development than primary schools, until at least 2015. However, beyond this period, consideration may need to be given to the provision of extra secondary school places.'
Youth centre	KEY	Shropshire Council		£107,000			2009-2010	Shropshire Council capital programme	
Replacement	KEY	Shropshire							Provision of a swimming

Infrastructure or investment requirement and opportunities	Critical Priority or Key	Lead delivery partner	Other partners	Cost	Funding secured	Funding gap	Timescale for delivery	Potential funding sources	Notes
leisure centre		Council  (Community Services-Culture and Leisure)							pool and sports hall. In general the current site needs to be assessed and updated.
Provision of parks and gardens	KEY	Shropshire Council  (Development Services-Strategy and Policy)						Developer contributions	The PPG17 Study has identified a current under supply of parks and gardens in Bridgnorth
Provision for children	KEY	Shropshire Council  (Development Services-Strategy and Policy)						Developer contributions	The PPG17 Study has identified a current under supply of provision for children in Bridgnorth
Provision for young people	KEY	Shropshire Council  (Development Services-Strategy and Policy)						Developer contributions	Leisure Services creating new teen play area at Crown Meadow in partnership with the Town Council in 2010.
Provision of allotments	KEY	Shropshire Council  (Development Services-Strategy and Policy)						Developer contributions	The PPG17 Study has identified a current under supply of allotments in Bridgnorth

Infrastructure or investment requirement and opportunities	Critical Priority or Key	Lead delivery partner	Other partners	Cost	Funding secured	Funding gap	Timescale for delivery	Potential funding sources	Notes
Outdoor Sports provision - Minimum of 1 multi pitch site providing for competition and training with appropriate facilities and accessibility	KEY	Shropshire Council	Sport England Town council Developers To facilitate implementation of the Playing Pitch Strategy (PPS) through the PPS Group, as set out in the PPS Action Plan 2010, in partnership as appropriate.					Developer contributions	Improvement to quantity, quality and accessibility of pitches, specifically mini pitches.
Early years adaptation	KEY	Shropshire Council  (Children and Young Peoples Services)		£197,000			2009-2010	Shropshire Council capital programme	
Adult learning	KEY	Shropshire Council  (Community Services- Culture and Leisure)					2009-2011		
Advice Services countywide	KEY	Citizens Advice Bureau		£150,000 countywide					AWM will make funding available for Citizens Advice Service or similar to provide services

Infrastructure or investment requirement and opportunities	Critical Priority or Key	Lead delivery partner	Other partners	Cost	Funding secured	Funding gap	Timescale for delivery	Potential funding sources	Notes
Playbuilder Grant	KEY	Shropshire Council  (Community Services- Culture and Leisure)					2009-11	Shropshire Council capital programme	
The Severn Way long distance footpath and Jack Mytton Way long distance bridleway	KEY	Shropshire Council  (Community Services- Culture and Leisure)					aspirational	Shropshire Council capital programme / LTP	Creation, enhancement and promotion of The Jack Mytton Way and the Severn Way footpath including tackling knotweed problems on the path alongside the river
Various rights of way improvements including removal of stiles and enhanced signage to ensure access for all.	KEY	Shropshire Council  (Community Services- Culture and Leisure)					A survey is being carried out in 2010/11 to determine works required	Shropshire Council capital programme / LTP	Creation and enhancement of routes to create new circular walks and promotion of 'health walks' and 'walking for health schemes
<b>Environment and climate change</b>									
New water supply at Ombersley	CRITICAL	Severn Trent Water	Environment Agency				2020-2025	Identified in AMP4 but deferred until AMP7	Water resource zone covers Bridgnorth. The need for the scheme has been deferred until later in the planning period (AMP 7 2020-

Infrastructure or investment requirement and opportunities	Critical Priority or Key	Lead delivery partner	Other partners	Cost	Funding secured	Funding gap	Timescale for delivery	Potential funding sources	Notes
									2025). Issues remain around gaining planning permission and an additional abstraction licence from the EA.
Upgrade to Sewage Treatment Works	CRITICAL	Severn Trent Water	Environment Agency				2020-2025		The Shropshire Water Cycle Study identifies that hydraulic capacity will be breached at the Bridgnorth Slads WWTW due to growth in AMP7 (2020-2025). There are no known physical constraints that would prevent additional capacity being provided at these treatment works. It is also important to note that the Water Cycle Study has based its assessment on an assumed capita consumption of 160l/h/d and the implementation of water efficiency measures may negate the need to upgrade the WWTW.

Infrastructure or investment requirement and opportunities	Critical Priority or Key	Lead delivery partner	Other partners	Cost	Funding secured	Funding gap	Timescale for delivery	Potential funding sources	Notes
Upgrades to the sewerage network	CRITICAL	Severn Trent Water					The sewer network is currently being reviewed by Severn Trent Water and will continue to be reviewed every 6 months as part of the water company's sewer network plans to allow issues to be addressed in a timely manner.	Options are currently being appraised by Severn Trent Water as part of their capital investment programme.	All flows are pumped to the treatment works by a single 450mm diameter 2.7km rising main by Underhill Street, located to the west of the River Severn. Flows to the east of the river pass through twin 300mm diameter siphon which are protected upstream by a combined sewer overflow. Any development upstream of this combined sewer overflow would require modelling to determine whether its performance would be unduly affected. There are three known isolated flooding problems in the catchment but these are currently being appraised by capital projects for resolution in the next 2-3 years.

Infrastructure or investment requirement and opportunities	Critical Priority or Key	Lead delivery partner	Other partners	Cost	Funding secured	Funding gap	Timescale for delivery	Potential funding sources	Notes
Additional electricity reinforcements for employment land	CRITICAL	Central Networks West							This assessment cannot be made more precise until more details of the proposed developments becomes available
Household waste recycling	KEY	Shropshire Council  (Development Services- Public Protection)		£428,095			2009-2010	Shropshire Council capital programme	
METNET- Targeted business support to Environmental Technology SMEs to improve their competitiveness and productivity.	KEY	Shropshire Council  (Development Services- Economic Development)	Herefordshire Council, Worcestershire Council and Telford and Wrekin (Marches LEP)	£351,531 (across partnership area including Shropshire)			Up to 31/03/2012	ERDF, AWM	The Marches Environmental Technologies Network (METNET) is a business network within the Marches LEP area. There is a particular emphasis on engagement, collaboration and innovation
Provision of open space	KEY	Shropshire Council	Town Council, developers					Developer contributions	Bridgnorth currently has a large under supply of natural and semi natural open space.
Coal resources/the legacy of past		Land owner/ Developer	Coal Authority, Shropshire						The Coal Authority has advised that Bridgnorth is affected to some

Infrastructure or investment requirement and opportunities	Critical Priority or Key	Lead delivery partner	Other partners	Cost	Funding secured	Funding gap	Timescale for delivery	Potential funding sources	Notes
coal mining activity			Council						<p>extent by the presence of coal resources at, or, close to the surface and also the legacy of past coal mining activity.</p> <p>Where a legacy exists and development is sought, the Coal Authority advises that there is potential need to remediate land affected by mining hazards and ensure its stability.</p>
<b>Transport and accessibility</b>									
Developer contribution for public transport.	KEY	Shropshire Council  (Development Services- Highways and Transportation)		£100,000	N/A	N/A		Developer contribution	Land at Wenlock Road. Funds awaited from contractor.
Developer contribution for public transport.	KEY	Shropshire Council  (Development Services- Highways and Transportation)		£5,000	N/A	N/A		Developer contribution	Land at Wenlock Road. Funds awaited from contractor
Developer contribution for	KEY	Shropshire Council		£15,000	N/A	N/A		Developer contribution	Land at Wenlock Road. Funds awaited from

Infrastructure or investment requirement and opportunities	Critical Priority or Key	Lead delivery partner	Other partners	Cost	Funding secured	Funding gap	Timescale for delivery	Potential funding sources	Notes
pedestrian crossing		(Development Services- Highways and Transportation)							contractor
Developer contribution for parking controls in town centre	KEY	Shropshire Council  (Development Services- Highways and Transportation)		£10,000	N/A	N/A		Developer contribution	Land at the Smithfield. Funds awaited from contractor.
Developer contribution for traffic orders	KEY	Shropshire Council  (Development Services- Highways and Transportation)		£10,000	N/A	N/A		Developer contribution	Land at the Smithfield. Funds awaited from contractor.
Whitburn Street and Northgate enhancement	KEY	Shropshire Council  (Development Services- Highways and Transportation)		£720,000			2010-2011	Shropshire Council capital programme	
High Town central area car park and inner relief road redevelopment	KEY	Shropshire Council  (Development Services- Highways and Transportation)					aspirational		

Infrastructure or investment requirement and opportunities	Critical Priority or Key	Lead delivery partner	Other partners	Cost	Funding secured	Funding gap	Timescale for delivery	Potential funding sources	Notes
Severn Valley Railway upgrade	KEY	Shropshire Council  (Development Services- Highways and Transportation)							Upgrades to attraction. Need to consider cross boundary issues with Wyre Forest in terms of encouraging a greater number of people to use the railway and the increased number of associated visits to Kidderminster and Bewdley.
Improvement to bus network infrastructure	KEY	Shropshire Council  (Development Services- Highways and Transportation)		£500,000			2011-2026	Developer contributions/ LTP funding	
Develop and improve the cycle and pedestrian network in Market Towns	KEY	Shropshire Council  (Development Services- Highways and Transportation)		£500,000			2011-2026	Developer contributions/ LTP funding	Projects to be identified in LTP3 under a proactive programme of improvement to footways, ramps, crossings and signals
Local improvements,	KEY	Shropshire Council		£500,000			2011-2026	Developer contributions/	To include: <ul style="list-style-type: none"> <li>• Measure to</li> </ul>

Infrastructure or investment requirement and opportunities	Critical Priority or Key	Lead delivery partner	Other partners	Cost	Funding secured	Funding gap	Timescale for delivery	Potential funding sources	Notes
traffic management, parking provision and speed and safety enhancements		(Development Services- Highways and Transportation)						LTP funding	tackle Whitburn Street air quality issues <ul style="list-style-type: none"> <li>• Traffic sign review</li> <li>• Cycle link along Severn Valley Railway to Shrewsbury</li> </ul>

DRAFT

## **3. COMMUNITY HUBS PLACE PLAN FOR THE BRIDGNORTH AREA**

### **3.1 VISION FOR COMMUNITY HUBS**

The vision for Community Hubs is found in the Core Strategy Policy CS4, and is as follows:

***Community Hubs will have development that helps to rebalance rural communities by providing facilities, economic development or housing for local needs that is of a scale appropriate to the settlement.***  
***Core Strategy Policy CS4***

Within the Bridgnorth area, the following settlement has been put forward by the local community as Community Hubs:

- Ditton Priors

### **3.2 PROFILE OF COMMUNITY HUBS IN THE BRIDGNORTH AREA**

### **3.3 COMMUNITY LED PLANNING IN COMMUNITY HUBS IN THE BRIDGNORTH AREA**

#### **Community Led Plans**

*Ditton Priors Parish Plan (2006)*

The following have been taken from the Ditton Priors Parish Plan as identified community needs and priorities:

- Transport, traffic and road safety
- Environment
- Housing
- Noise pollution
- Light pollution
- Refuse
- Public Rights of Way
- Provision of facilities
- Open space provision
- Trees, hedgerows and wildlife
- Agriculture
- Tourism
- Employment opportunities

- Traffic and road safety
- Social activities and lifelong learning for both young people and adults
- More communication

### **Local Joint Committee**

Ditton Priors is located within the *Much Wenlock, Brown Clee and Highley* Local Joint Committee Area. The following needs and priorities have been raised by the local community as part of Local Joint Committee meetings:

#### *Much Wenlock, Brown Clee and Highley Local Joint Committee*

- Road Safety, speeding, HGVs
- Youth opportunities, facilities
- Adult services, elderly services

### **Other Consultations**

#### **Local Development Framework Site Allocations and Management of Development DPD (SAMDev) – Issues and Options Consultation (April-June 2010)**

*Ditton Priors Parish Council representations on the SAMDev*

(Representation reference no SAMDEV DPD/04IOP/002361/00003)

- Readopt the Severn Valley Railway as a rail link
- Improvements to the Bridgnorth to Ludlow Road and then allow access to the industrial estate/former military depot and Ditton Priors from that road
- The access roads to Ditton Priors are poor a two carriage road from Monkhopton would make access to the village easier.
- Any increase in the number of residents may lead to the doctors surgery requiring expansion
- Improved leisure facilities for younger people.
- Traffic calming within the whole community.

### 3.4 INFRASTRUCTURE AND INVESTMENT DELIVERY FRAMEWORK FOR COMMUNITY HUBS IN THE BRIDGNORTH AREA

#### Ditton Priors

Infrastructure or investment requirements and opportunities	Critical Priority or Key	Lead delivery partner	Other partners	Cost	Funding secured	Funding gap	Timescale for delivery	Potential funding sources	Notes
<b>Housing and cohesive, sustainable communities</b>									
Housing Needs Assessment	KEY	Ditton Priors Parish Council, Shropshire Council  (Housing Services)							The Parish Council has identified the need for a Housing Needs Survey to be conducted
<b>Economic investment and opportunity</b>									
Marketing rural Shropshire as a tourism destination	KEY	Shropshire Council  (Development Services- Economic Development)	Ditton Priors Parish Council						Ditton Priors Parish Council has identified the need to promote the area and encourage more homes to offer Bed and Breakfast.
<b>Social and community infrastructure</b>									
Provision for	KEY	Ditton	Shropshire						The Parish Council has

Infrastructure or investment requirements and opportunities	Critical Priority or Key	Lead delivery partner	Other partners	Cost	Funding secured	Funding gap	Timescale for delivery	Potential funding sources	Notes
children and young people		Priors Parish Council	Council, Village Hall Committee, Ditton Priors Playfield Association						identified the need for a holiday scheme, secondary school club and possible youth club.
Improve Parish Communications	KEY	Ditton Priors Parish Council							The Parish Council has identified the need for a Parish newsletter and website.
Improvements to Streetscene	KEY	Ditton Priors Parish Council, Shropshire Council	Ditton Priors Playing Fields Association Oak Farm Centre, Shropshire Hills AONB						<p>The Parish Council has identified the need for the following:</p> <ul style="list-style-type: none"> <li>• The provision of large litter bins, dog waste bins and potentially the employment of a part time litter picker.</li> <li>• planting small trees by the footpath to Oak Farm and more regular grass mowing.</li> <li>• additional</li> </ul>

Infrastructure or investment requirements and opportunities	Critical Priority or Key	Lead delivery partner	Other partners	Cost	Funding secured	Funding gap	Timescale for delivery	Potential funding sources	Notes
									<p>benches and picnic tables.</p> <ul style="list-style-type: none"> <li>• More seats, trees and bulbs near to the school.</li> </ul>
<b>Environment and climate change</b>									
<b>Transport and accessibility</b>									
Footpath and Bridleway Improvements	KEY	Ditton Priors Parish Council	Shropshire Council, Landowners British Horse Society						<p>The Parish Council has identified the need for the following:</p> <ul style="list-style-type: none"> <li>• Reinstatement of the former rights of way on the industrial estate</li> <li>• Upgrading of certain footpaths and bridleways</li> </ul>
Local highway improvements, traffic management, parking provision and speed and safety	KEY	Shropshire Council	Ditton Priors Parish Council						<p>The Parish Council has identified the need for the following:</p> <ul style="list-style-type: none"> <li>• A speed limit through Ditton Priors Village, traffic calming,</li> </ul>

Infrastructure or investment requirements and opportunities	Critical Priority or Key	Lead delivery partner	Other partners	Cost	Funding secured	Funding gap	Timescale for delivery	Potential funding sources	Notes
enhancements									<p>road safety signs and weigh restrictions on roads.</p> <ul style="list-style-type: none"> <li>• An access road to the industrial estate.</li> <li>• Improvements to Derrington Road between the village and Monkopton</li> <li>• More passing places on roads</li> </ul>

## 4. COMMUNITY CLUSTERS PLACE PLAN FOR THE BRIDGNORTH AREA

### 4.1 VISION FOR COMMUNITY CLUSTERS

The vision for Community Hubs is found in the Core Strategy Policy CS4, and is as follows:

***Community Clusters are comprised of two or more smaller settlements, where the combined settlements offer a range of services contributing to a sustainable community. Community Clusters will have development that helps to rebalance rural communities by providing facilities, economic development or housing for local needs that is of a scale appropriate to the settlement.***

***Core Strategy Policy CS4***

Within the Bridgnorth area, no settlements have currently been put forward by the local community (via parish councils) as Community Clusters. All of the surrounding area around Bridgnorth and outside of the identified Community Hub, is therefore defined as countryside (Rural Hinterland), where further development will be strictly controlled and only allowed in exceptional circumstances. The Council will, however, continue to work with the local community to identify the community benefits that can be delivered through development and there is an ongoing opportunity for communities to 'opt in' as either a Hub or Cluster, at a later stage in the Local Development Framework Plan period (2006-2026), for example through a review of local parish plans.

## 5. BRIDGNORTH'S RURAL HINTERLAND PLACE PLAN

### 5.1 VISION FOR RURAL HINTERLAND

The vision for the Rural Hinterland is found in the Core Strategy Policy CS5, and is as follows:

***In the open countryside, new development will be strictly controlled. Development proposals on appropriate sites which maintain and enhance countryside vitality and character will be permitted where they improve the sustainability of rural communities by bringing local economic and community benefits.***

***Core Strategy Policy CS5***

Within the Bridgnorth area, all areas outside Bridgnorth Town and the identified Community Hub are part of the Rural Hinterland.

### 5.2 PROFILE OF THE RURAL HINTERLAND IN THE BRIDGNORTH AREA

### 5.3 COMMUNITY LED PLANNING IN BRIDGNORTH'S RURAL HINTERLAND

#### **Community Led Plans**

*Alveley and Romsley Parish Plan (2007)*

The following have been taken from the Alveley Parish Plan as identified community needs and priorities:

- The built environment
- Faith and leisure activities
- Sports facilities and activities
- Village hall and community facilities
- Green space and countryside
- Facilities for young people and the elderly
- Policing and community safety issues
- Land use and planning
- Policing and community safety issues
- Housing e.g. affordability and supply, including sheltered accommodation
- Environment and conservation

*Claverley Parish Plan (2005-2015)*

The following have been taken from the Claverley Parish Plan as identified community needs and priorities:

- Future development
- Facilities and services
- Housing, building and street lighting
- Community facilities including the shop and Post Office
- Community events and Parish communications
- Tourism activities
- Roads, transport, traffic and parking
- The countryside and environment
- Rights of way
- Saving and generating energy

*Stottesdon and Sidbury Parish Plan (2004)*

The following have been taken from the Stottesdon Parish Plan as identified community needs and priorities. A review of the Parish Plan is anticipated in 2010.

- Travel, transport and roads including speeding
- Shops and shopping
- Provision for young people and children
- Provision and support for community activities
- Increased training and employment
- Housing including affordable housing for local people
- Increased provision of healthcare services
- Information and communication
- Policing and safety including the development of a Parish watch scheme
- Farming
- A quarterly Parish newsletter

**Local Joint Committee**

Alveley, Quatt Malvern, Claverley, Morville, Tasley, Astley Abbots, Worfield, Stockton and Sutton Maddock are located within the Bridgnorth, Worfield, Alveley and Claverley Local Joint Committee Area. The following needs and priorities have been raised by the local community as part of Local Joint Committee meetings:

*Bridgnorth, Worfield, Alveley and Claverley Local Joint Committee*

- Road safety, speeding and HGVs
- Police and community safety
- Streetscene and litter – Keep Britain Tidy pilot Scheme
- Traffic management for events
- The re-opening of the operating theatre at Bridgnorth Hospital
- Knotweed in the river
- Correct use of Byways and footpaths.

Aston Botterell, Neenton, Deuxhill, Glazeley and Middleton Scriven, Chetton, Eardington and Morville are located within the *Much Wenlock, Brown Clee and Highley* Local Joint Committee Area. The following needs and priorities have been raised by the local community as part of Local Joint Committee meetings:

*Much Wenlock, Brown Clee and Highley Local Joint Committee*

- Road Safety, speeding, HGVs
- Youth opportunities, facilities
- Adult services, elderly services

Stottesdon and Aston Botterell are located within the Cleobury and Rural Local Joint Committee Area. The following needs and priorities have been raised by the local community as part of Local Joint Committee meetings:

*Cleobury and Rural Local Joint Committee*

- Road Safety, speeding, HGVs
- Youth opportunities, facilities
- Police and Community Safety
- Housing needs
- Flooding
- Highways
- Waste
- Health care provision (especially a new doctors surgery)
- The local economy, broadband and tourism

### **Other Consultations**

#### **Local Development Framework Core Strategy- Policy Directions Consultation (August-October 2009)**

*Tasley Parish Council representations on the Core Strategy* (Representation reference no 002447/00001/010)

- Vital need for an educational/ vocational training centre to cater for the eastern region

*Worfield and Rudge Parish Council representations on the Core Strategy* (Representation reference no 002467/00002/003)

- Improved transport services in the rural communities.

#### **Local Development Framework Core Strategy- Final Plan Publication (February- March 2010)**

*Stottesdon, Sidbury Parish Council representations on the Core Strategy.*

- Encourage private sector to build lifetime homes as housing associations have to - provision for lifts and ground floor showers etc.
- Pleased to see that smaller communities will have housing to meet local housing needs with the scale appropriate to the area.
- Commend the consideration of Parish Plans and Village Design statements in the planning of future development. Parish Council's should include funds in their precept to carry out these.

- 33% local needs affordable housing within developments - there needs to be an explicit and uniform condition put on these homes.
- We are pleased that the plan supports tourism and this is vital to a rural County such as Shropshire.
- Water Management – this is too ‘Severn centric’ – this does not take into account the Southern Shropshire River Teme catchment area, together with all its problems.
- There is no definition of a ‘market town’ – clarification is needed of this.
- No consideration has been given to military establishments re: impact.
- Public transport – needs to have a degree of flexibility. The Link service that has been set up has left a large gap in transport for tourism.
- Secure by Design needs to be sensitive to the area.
- Difference between social rented and intermediate rent should be pepper-potted on estates however small.
- There needs to be flexibility in the plan for rural business.

**Local Development Framework Site Allocations and Management of Development DPD (SAMDev) – Issues and Options (April- June 2010)**

*Alveley and Romsley Parish Council representations on the SAMDev*  
(Representation reference no SAMDEV DPD/04IOP/002308/00001)

- Development within Alveley should only be by infill within the village area

*Claverley Parish Council representations on the SAMDev*

(Representation reference no SAMDEV DPD/04IOP/002346/00005)

- Small scale affordable housing
- Large scale insensitive development is not sustainable and not wanted in the Parish.

*Stottesdon, Sidbury Parish Council representations on the SAMDev*

(Representation reference no SAMDEV DPD/04IOP/002443/00003)

- The sewerage system, as well as water and electricity supplies in Chorley would need to be expanded if any further development took place. The services also require investigation in Stottesdon
- The Brown Clee Medical Practice have a branch surgery in Stottesdon which will require expansion as patient numbers increase. There will also be the need for extra parking facilities.
- The Village Hall in Chorley has inadequate parking area
- Public transport in Stottesdon is poor
- Additional road repairs and more ‘passing places’ are required
- Improved broadband is required in Stottesdon
- Retention of the Fighting Cock public house and its adjacent general store in Stottesdon is vital
- Small scale housing, limited in number is needed. This should include market and shared ownership housing, together with rented in perpetuity which would include bungalows.

- The retention of the primary school in Stottesdon is essential.
- School playing field in Stottesdon should be protected.
- Opportunities to create small industrial units on appropriate sites should be encouraged
- Change of use applications to existing farm buildings should be encouraged in Stottesdon.

### **Alveley and Romsley Community Toolkit Event – 17<sup>th</sup> April 2010**

The following activities, facilities, services and infrastructure were considered to be the most important community assets by the event attendees:

#### Activities:

- Preservation of green belt
- Arts and heritage events
- Senior citizens groups and clubs
- Youth groups and clubs
- Children and family activities

#### Facilities:

- Community centre/village hall
- School
- Open spaces and play areas

#### Services:

- Healthcare
- Post office services
- Shops

#### Infrastructure:

- Housing opportunities
- Regular public transport
- Water drainage and flood measures
- Road improvements
- Broadband speed and connectivity

Full information and feedback from the Alveley and Romsley Toolkit event is available at:

(<http://www.shropshire.gov.uk/factsfigures.nsf/open/C6BE79E370240015802577760045C7C5>)

## 5.4 INFRASTRUCTURE AND INVESTMENT DELIVERY FRAMEWORK FOR BRIDGNORTH'S RURAL HINTERLAND

### Alveley and Romsley

Infrastructure or investment requirements and opportunities	Critical Priority or Key	Lead delivery partner	Other partners	Cost	Funding secured	Funding gap	Timescale for delivery	Potential funding sources	Notes
<b>Housing and cohesive, sustainable communities</b>									
Affordable Housing	PRIORITY								The Parish Council has identified the need for smaller bungalow type dwellings that could be rented, leased or bought at an affordable price.
<b>Economic investment and opportunity</b>									
<b>Social and community infrastructure</b>									
Improvements to the Church	KEY	Parochial Church Council			Funding in place				The Parish Council has identified the need for: <ul style="list-style-type: none"> <li>To re-lead the roof of the nave and the tower</li> <li>To enlarge the Churchyard</li> </ul>
Improvements to the Village Hall	KEY	Village Hall Committee							The Parish Council has identified the need for

Infrastructure or investment requirements and opportunities	Critical Priority or Key	Lead delivery partner	Other partners	Cost	Funding secured	Funding gap	Timescale for delivery	Potential funding sources	Notes
									kitchen improvements.
Improved facilities for young people	KEY	Alveley and Romsley Parish Council							<p>The Parish Council has identified the need to:</p> <ul style="list-style-type: none"> <li>• Explore the idea of providing a shelter with facilities such as a hot drinks machine and a confectionary machine.</li> <li>• Restart the youth club</li> <li>• A BMX/ skateboarding facility at the County Park</li> </ul>
Provision for the elderly	KEY	Alveley and Romsley Parish Council							<p>The Parish Council has identified the need for:</p> <ul style="list-style-type: none"> <li>• Further activities for elderly residents</li> <li>• Improvements to the six properties in the Parish without central heating</li> </ul>

Infrastructure or investment requirements and opportunities	Critical Priority or Key	Lead delivery partner	Other partners	Cost	Funding secured	Funding gap	Timescale for delivery	Potential funding sources	Notes
Establish a neighbourhood watch	KEY	Alveley and Romsley Parish Council, West Mercia Police							The Parish Council has identified the need for a Neighbourhood Watch Scheme
Improvements to the Streetscene	KEY	Alveley and Romsley Parish Council, Shropshire Council							The Parish Council has identified the need for <ul style="list-style-type: none"> <li>• No fly tipping signs</li> <li>• A smokeless zone</li> <li>• Reintroduce hanging baskets</li> <li>• An annual village tidy up</li> </ul>
<b>Environment and climate change</b>									
<b>Transport and accessibility</b>									
Local highway improvements, traffic management, parking provision and speed and	KEY	Shropshire Council (Highways)	Alveley and Romsley Parish Council						The Parish Council has identified the need for: <ul style="list-style-type: none"> <li>• A 50mph limit along the whole length of the A442 with lower</li> </ul>

Infrastructure or investment requirements and opportunities	Critical Priority or Key	Lead delivery partner	Other partners	Cost	Funding secured	Funding gap	Timescale for delivery	Potential funding sources	Notes
safety enhancements									limits in built up areas. <ul style="list-style-type: none"> <li>Establish a diversionary route in the case of a major traffic incident on the A442</li> </ul>
Develop and improve the cycle and pedestrian network	KEY	Shropshire Council (Highways)	Alveley and Romsley Parish Council						The Parish Council has identified the need for cycle lanes rather than the combined path for cyclists and walkers in the Country Park

**Claverley**

Infrastructure or investment requirements and opportunities	Critical Priority or Key	Lead delivery partner	Other partners	Cost	Funding secured	Funding gap	Timescale for delivery	Potential funding sources	Notes
<b>Housing and cohesive, sustainable communities</b>									
<b>Economic investment and opportunity</b>									

Infrastructure or investment requirements and opportunities	Critical Priority or Key	Lead delivery partner	Other partners	Cost	Funding secured	Funding gap	Timescale for delivery	Potential funding sources	Notes
<b>Social and community infrastructure</b>									
Additional police presence	KEY	Claverley Parish Council, West Mercia Police					Ongoing	West Mercia Police	The Parish Council has identified the need for greater Police coverage in the Claverley area and better communication between the Police and Parish.
Improved Parish communications	KEY	Claverley Parish Council							The Parish Council has identified the need to revitalise the Parish website
Improvements to the Streetscene	KEY	Claverley Parish Council, Shropshire Council							The Parish Council has identified the need for the following: <ul style="list-style-type: none"> <li>• Replacement of existing lights with conservation style lamps.</li> <li>• Additional hedge trimming</li> <li>• Develop a Pride in the Parish</li> </ul>

Infrastructure or investment requirements and opportunities	Critical Priority or Key	Lead delivery partner	Other partners	Cost	Funding secured	Funding gap	Timescale for delivery	Potential funding sources	Notes
									Scheme <ul style="list-style-type: none"> <li>Install additional litter bins and have litter picks</li> </ul>
<b>Environment and climate change</b>									
Provision of mains gas supply	KEY	Claverley Parish Council	Transco						The Parish Council has identified the need to investigate demand for household gas supply
Recycling Provision	KEY	Shropshire Council (Waste Management)	Claverley Parish Council						The Parish Council has identified the need for improved Council collection and the provision of sites for recycling
<b>Transport and accessibility</b>									
Local highway improvements, traffic management, parking provision and speed and safety enhancements	KEY	Shropshire Council (Highways)	Claverley Parish Council						The Parish Council has identified the need to: <ul style="list-style-type: none"> <li>Establish an annual maintenance plan with Shropshire Council</li> <li>Seek Quiet Lane designation</li> </ul>

Infrastructure or investment requirements and opportunities	Critical Priority or Key	Lead delivery partner	Other partners	Cost	Funding secured	Funding gap	Timescale for delivery	Potential funding sources	Notes
	KEY								<p>where necessary</p> <ul style="list-style-type: none"> <li>• Provision of 'Children at Play' signs where necessary</li> <li>• Seek a solution to the current parking problem. It has been suggested that there is a need to develop a central car park to address parking problems in Claverley Village</li> </ul>
Improve footpaths	KEY	Claverley Parish Council	Shropshire Council, Claverley Walkers, Church Tourism Group						<p>The Parish Council has identified the need for:</p> <ul style="list-style-type: none"> <li>• Destination way markers</li> <li>• Seating, kissing gates and dog wickets.</li> <li>• Removal of</li> </ul>

Infrastructure or investment requirements and opportunities	Critical Priority or Key	Lead delivery partner	Other partners	Cost	Funding secured	Funding gap	Timescale for delivery	Potential funding sources	Notes
									obstructions <ul style="list-style-type: none"> <li>Investigation of disabled access</li> <li>The Parish Council has identified the need for a low cost map</li> </ul>

### Stottesdon and Sidbury

Infrastructure or investment requirements and opportunities	Critical Priority or Key	Lead delivery partner	Other partners	Cost	Funding secured	Funding gap	Timescale for delivery	Potential funding sources	Notes
<b>Housing and cohesive, sustainable communities</b>									
<b>Economic investment and opportunity</b>									
Develop a training and employment policy	KEY	Stottesdon and Sidbury Parish Council	Shropshire Council						The Parish Council wish to develop a policy on training and employment in the Parish.
<b>Social and community infrastructure</b>									

Infrastructure or investment requirements and opportunities	Critical Priority or Key	Lead delivery partner	Other partners	Cost	Funding secured	Funding gap	Timescale for delivery	Potential funding sources	Notes
Community Facilities	KEY	Stottesdon and Sidbury Parish Council	Shropshire Council						<p>The Parish Council has identified the need for a review of the needs of children and young people.</p> <p>Additional funding is also required for facilities for older children during summer holidays.</p>
Develop local training opportunities	KEY	Stottesdon and Sidbury Parish Council	Colleges, schools, Learning & Skills Council, local businesses						The Parish Council has identified the need to liaise with local colleges and other training providers to develop classes for computer skills and arts and crafts.
Improved Healthcare	KEY	PCT	Doctor's surgery, Shropshire Acute Health Trust, Shropshire & Staffordshire Strategic Health						The Parish Council has identified the need for an expanding range of services at the doctor's surgery and to ensure that there is a local provision of First Response.

Infrastructure or investment requirements and opportunities	Critical Priority or Key	Lead delivery partner	Other partners	Cost	Funding secured	Funding gap	Timescale for delivery	Potential funding sources	Notes
			Authority, Stottesdon and Sidbury Parish Council West Midlands Ambulance Service						
Provision of Broadband	KEY	BT	Switch on Shropshire, Shropshire Council, Stottesdon and Sidbury Parish Council						The Parish Council has identified the need for broadband within the Parish.
Set up a community surgery	KEY	Stottesdon and Sidbury Parish Council	Shropshire Council, West Mercia Police						The Parish Council has identified the need for a surgery in local facilities for District Councillors and the Police.
Develop a Parish Watch Scheme	KEY	Stottesdon and Sidbury Parish Council	West Mercia Police						The Parish Council support the development of a Parish Watch scheme across the parish. This will include residential areas, farms and other local businesses.

Infrastructure or investment requirements and opportunities	Critical Priority or Key	Lead delivery partner	Other partners	Cost	Funding secured	Funding gap	Timescale for delivery	Potential funding sources	Notes
Walking groups	KEY	Stottesdon and Sidbury Parish Council, Shropshire Council  (Leisure Services)							The Parish Council wish to establish a group that uses local paths for exercise.
<b>Environment and climate change</b>									
<b>Transport and accessibility</b>									
Local highway improvements, traffic management, parking provision and speed and safety enhancements	KEY	Stottesdon and Sidbury Parish Council, Shropshire Council  (Highways)	West Mercia Police, Stottesdon Primary School						The Parish Council has identified the need for speed restrictions at dangerous points.  The Parish Council will work with Stottesdon Primary School and local parents to increase children's levels of road safety and cycling proficiency.
Extension of the Lengthsman	KEY	Stottesdon and							The Parish Council has identified the need for

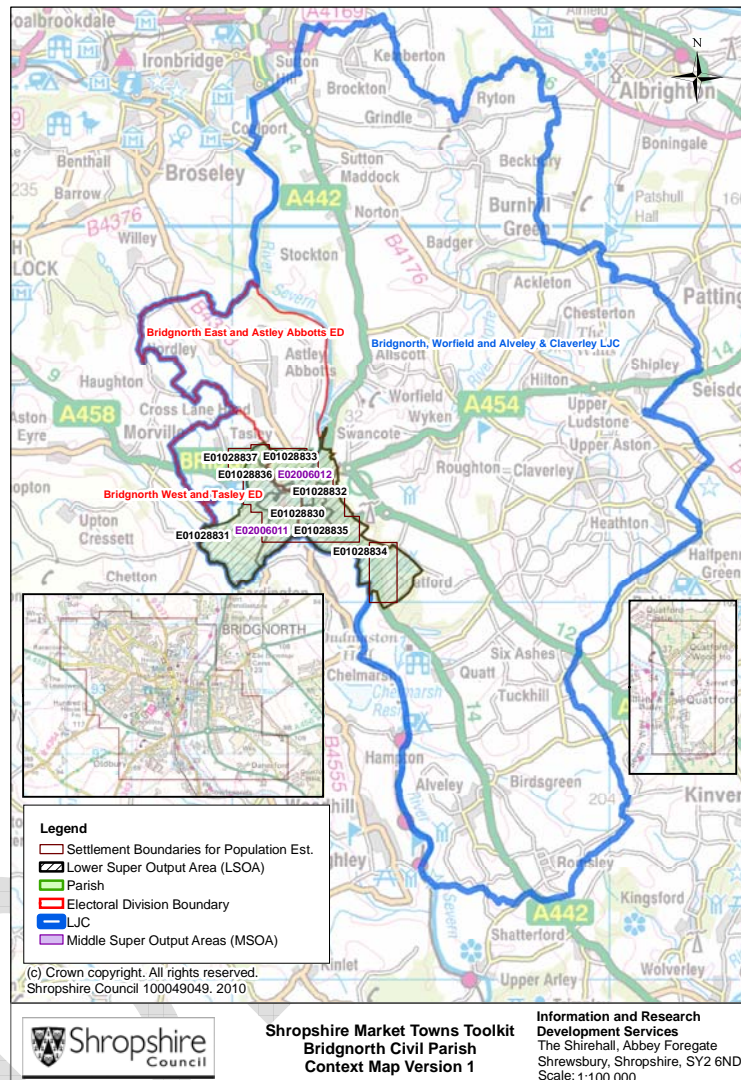
Infrastructure or investment requirements and opportunities	Critical Priority or Key	Lead delivery partner	Other partners	Cost	Funding secured	Funding gap	Timescale for delivery	Potential funding sources	Notes
Scheme		Sidbury Parish Council, Shropshire Council (Highways)							an extension of the Lengthsman Scheme to cover verges and paths.

DRAFT

# Bridgnorth Market Town Profile

(Information updated in October 2010)

## Local Context Map



## Social & Demographic Characteristics

### Demographics

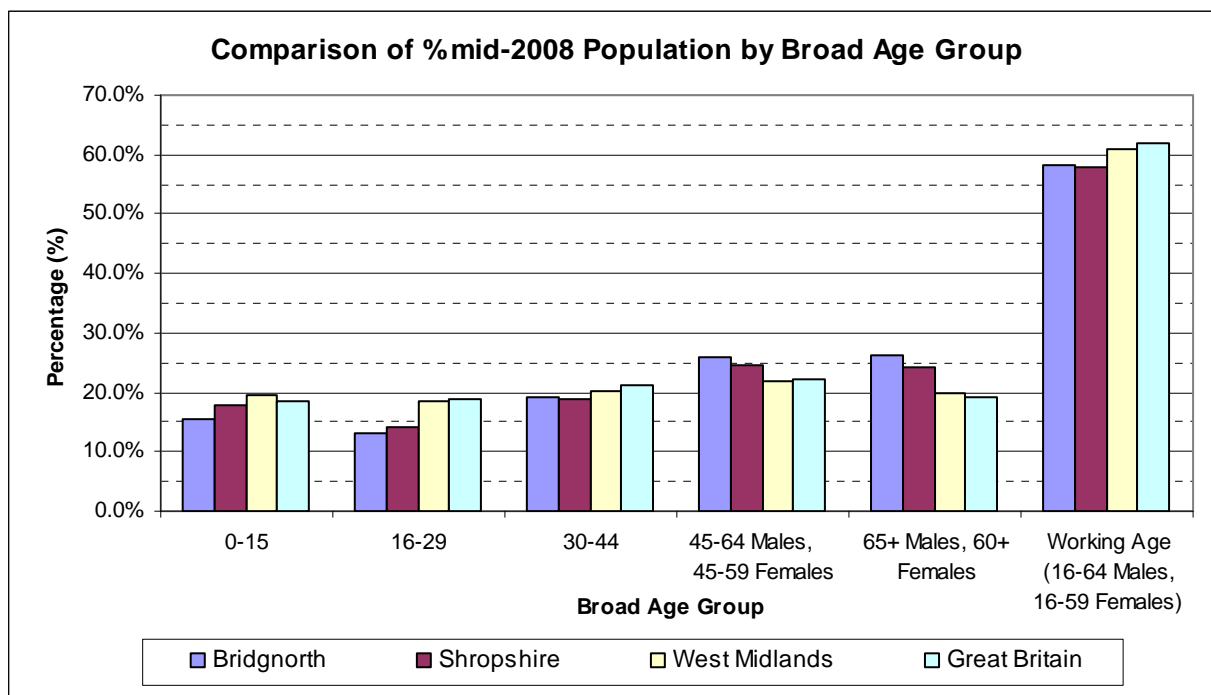
#### Mid-2008 Population Estimates

	All Ages	0-15	16-29	30-44	45-Retirement Age (45-64 Males, 45-59 Females)	Retirement Age + (65+ Males, 60+ Females)	Working Age (16-RA)
<b>Males</b>	5,600	900	800	1,100	1,700	1,100	3,600
<b>Females</b>	5,900	900	800	1,100	1,200	1,900	3,100
<b>Total</b>	11,500	1,800	1,500	2,200	3,000	3,000	6,700

Source: Mid-2008 Population Estimates for Lower Layer Super Output Areas in England and Wales by Broad Age Group and Sex (revised 2010), Office for National Statistics, © Crown Copyright 2010.

Notes: Population estimates have been made for the market town by combining the statistics of LSOAs that cover the area. Estimates have been rounded to the nearest 100.

Market town, county, regional and national comparison of mid-2008 population by Broad Age Group



Source: Mid-2008 Population Estimates (revised 2010), Office for National Statistics, © Crown Copyright 2010.

## The Economy

Structure of the Economy 2008 (ABI, 2003 Standard Industrial Classification)

	Bridgnorth % of units	Shropshire % of units
1 : Agriculture and fishing (SIC A,B)	*	2.9
2 : Energy and water (SIC C,E)	*	0.2
3 : Manufacturing (SIC D)	6.6	6.7
4 : Construction (SIC F)	9.8	11.9
5 : Distribution, hotels and restaurants (SIC G,H)	30.7	29.4
6 : Transport and communications (SIC I)	3.6	4.8
7 : Banking, finance and insurance, etc (SIC J,K)	33.1	27.3
8 : Public administration, education & health (SIC L,M,N)	7.8	9.3
9 : Other services (SIC O,P,Q)	7.5	7.7
Total	100.0	100.0

Source: Annual Business Inquiry Workplace Analysis 2008, Office for National Statistics, © Crown Copyright 2010.

Breakdown of Employment by Sector 2008 (ABI, 2003 Standard Industrial Classification)

	Bridgnorth % of Employees	Shropshire % of Employees
1 : Agriculture and fishing (SIC A,B)	*	0.6
2 : Energy and water (SIC C,E)	*	0.8
3 : Manufacturing (SIC D)	18.2	11.1
4 : Construction (SIC F)	4.8	6.0
5 : Distribution, hotels and restaurants (SIC G,H)	30.7	26.8
6 : Transport and communications (SIC I)	3.1	5.4
7 : Banking, finance and insurance, etc (SIC J,K)	13.1	12.2
8 : Public administration, education & health (SIC L,M,N)	24.2	31.3
9 : Other services (SIC O,P,Q)	5.7	5.9
Total	100.0	100.0

Source: Annual Business Inquiry Employee Analysis 2008, Office for National Statistics, © Crown Copyright 2010.

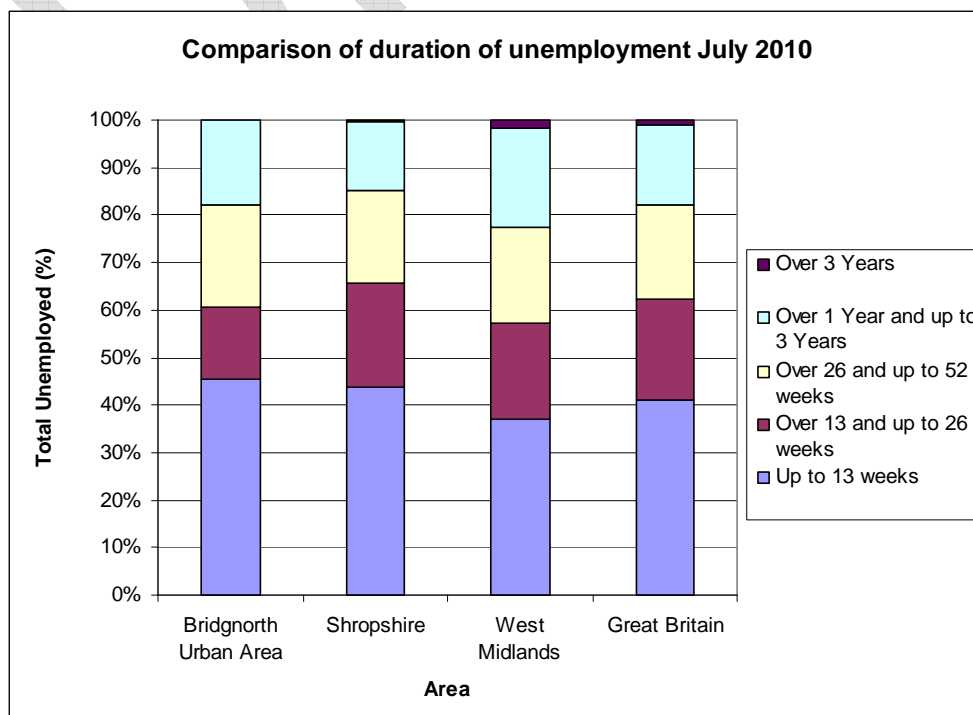
Total unemployment number and rate for Bridgnorth (September 2010) compared to county, regional and national averages

	Bridgnorth	Shropshire	West Midlands	Great Britain
Unemployment (Number)	167	4,502	156,930	1,381,106
Unemployment Rate (%)	-	2.5	4.5	3.5

Source: Claimant Count with Rates and Proportions, Office for National Statistics, © Crown Copyright 2010.

Note: The county, regional and national rates are the number of claimants as a percentage of the mid-2009 resident population aged 16-64.

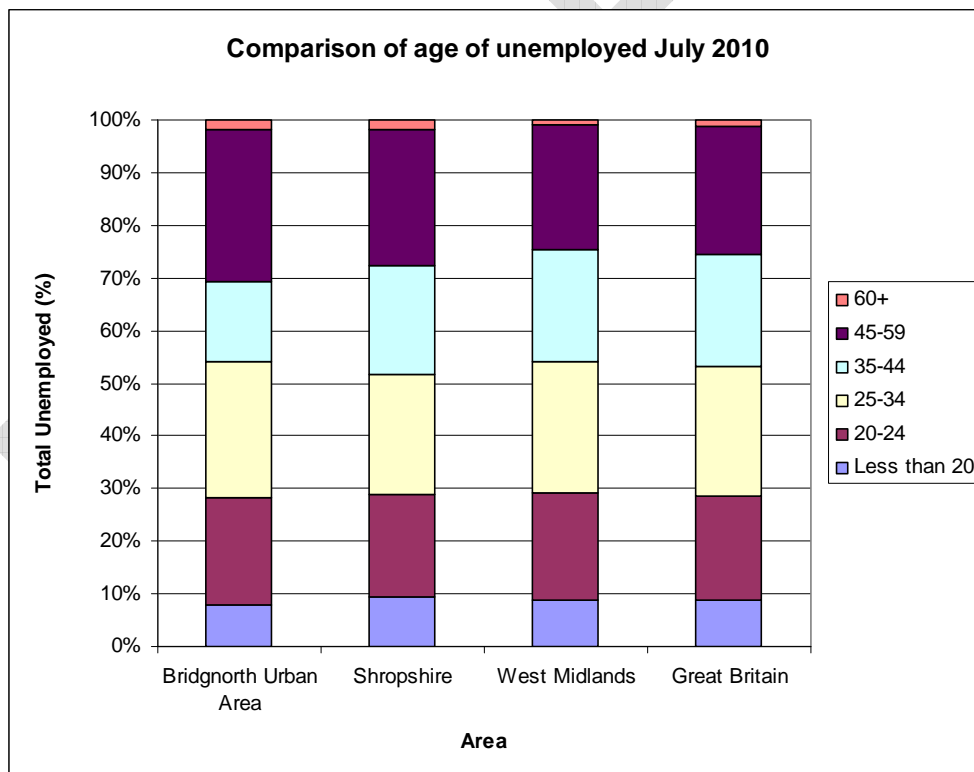
Duration of unemployment in Bridgnorth (% and numbers) compared to county, regional and national figures



	Up to 13 weeks		Over 13 and up to 26 weeks		Over 26 and up to 52 weeks		Over 1 year and up to 3 years		Over 3 years	
	No.	%	No.	%	No.	%	No.	%	No.	%
<b>Bridgnorth Urban Area</b>	75	45.4	25	15.3	35	21.5	30	17.8	0	0.0
<b>Shropshire</b>	1,960	43.8	975	21.9	875	19.6	635	14.2	25	0.5
<b>West Midlands</b>	57,690	36.9	31,910	20.4	31,625	20.2	32,455	20.8	2,710	1.7
<b>Great Britain</b>	567,430	41.1	291,900	21.2	271,620	19.7	235,950	17.1	12,485	0.9

Source: Claimant Count – Age and Duration, July 2010, Office for National Statistics, © Crown Copyright 2010.

Age of unemployed in Bridgnorth (% and numbers) compared to county, regional and national figures



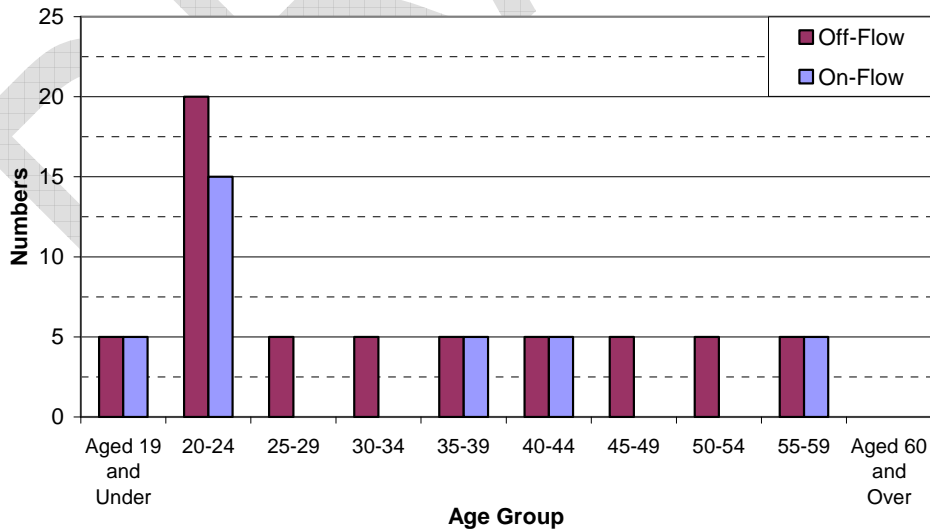
	Less than 20		20-24		25-34		35-44	
	No.	%	No.	%	No.	%	No.	%
<b>Bridgnorth Urban Area</b>	15	8.0	35	20.2	40	25.8	25	15.3
<b>Shropshire</b>	415	9.3	880	19.7	1,010	22.6	925	20.7
<b>West Midlands</b>	13,780	8.8	31,920	20.4	38,945	24.9	33,000	21.1
<b>Great Britain</b>	123,080	8.9	270,375	19.6	338,400	24.5	295,470	21.4

	45-59		60+	
	No.	%	No.	%
<b>Bridgnorth Urban Area</b>	45	28.8	5	1.8
<b>Shropshire</b>	1,165	26.1	75	1.7
<b>West Midlands</b>	37,115	23.7	1,635	1.0
<b>Great Britain</b>	336,805	24.4	15,255	1.1

Source: Claimant Count – Age and Duration, July 2010, Office for National Statistics, © Crown Copyright 2010.

## Unemployment Flows

Number of on and off flows on the unemployment register in Bridgnorth, September 2010



Source: Claimant Flows – Age and Duration, September 2010, Office for National Statistics, © Crown Copyright 2010.

Note: Data has been rounded to the nearest 5.

## Worklessness

### Current DWP Benefit Claimants claiming out of work benefits (February 2010)

	Bridgnorth		Shropshire		West Midlands		Great Britain	
	No.	% (1)	No.	% (2)	No.	% (2)	No.	% (2)
<b>Job Seekers</b>	215	3.2%	5,110	3.0%	176,050	5.3%	1,525,780	4.1%
<b>Incapacity benefit/ Severe Disablement Allowance</b>	335	5.0%	8,100	4.8%	197,800	6.0%	2,166,110	5.8%
<b>Lone parents (Income Support Statistical Group)</b>	70	1.0%	1,780	1.1%	69,210	2.1%	691,980	1.9%
<b>Carers</b>	-	-	2,100	1.3%	56,320	1.7%	530,740	1.4%
<b>Others on income related benefit (Income Support Statistical Group)</b>	-	-	180	0.1%	7,230	0.2%	74,780	0.2%
<b>Out of work benefits</b>	705	10.5%	17,050	10.2%	502,370	15.3%	5,013,230	13.5%
<b>Total Claimants</b>	830	12.4%	21,090	12.6%	593,250	18.0%	5,901,000	15.9%

Source of DWP Benefit Claimant Statistics: Office for National Statistics, © Crown Copyright 2010.

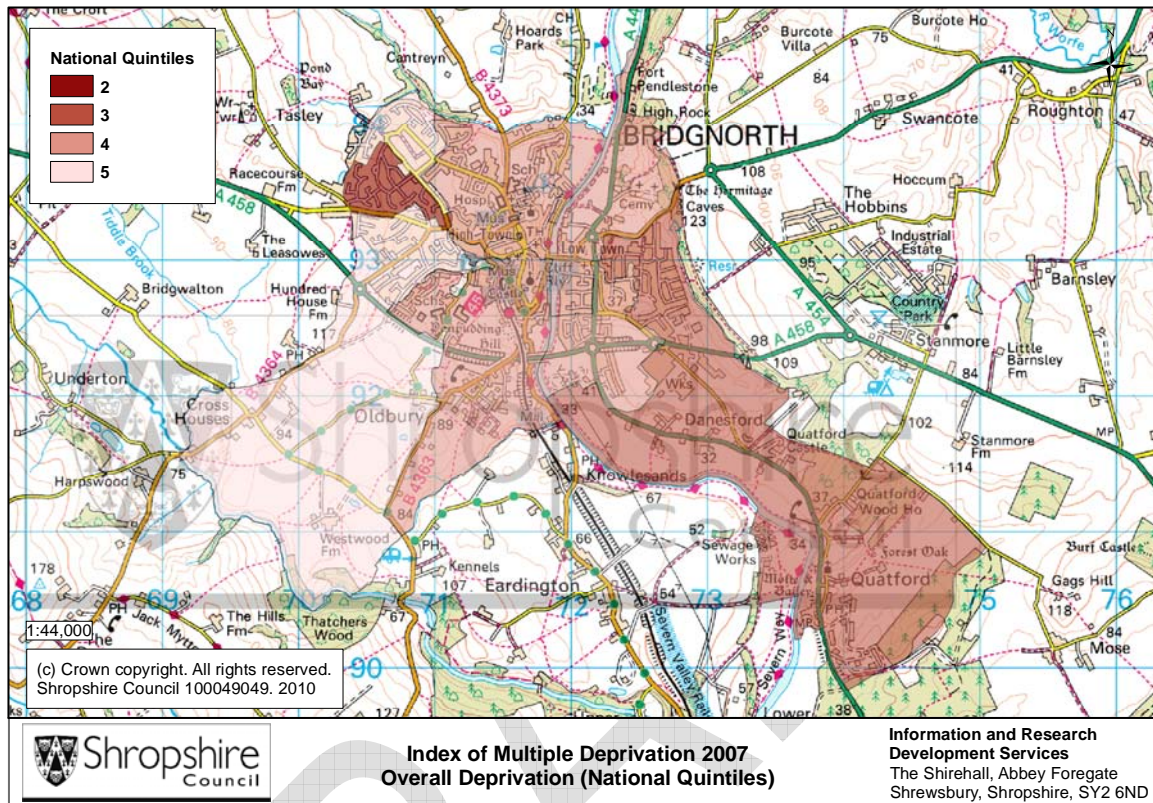
Notes: Carer's Allowance data is not available for smaller areas. 'Others on income related benefit' – claimant receives other Income Support (including IS Disability Premium) or Pension Credit. Data for market town has not been included because it also contains Carers Allowance Claimants.

Rate (%) note: The rate is the number of claimants as a percentage of the total resident working age population (aged 16-64 males, 16-59 females).

- (1) Source of population estimates (used for calculation of the Market Town rate): Mid-2008 Population Estimates for Lower Layer Super Output Areas in England and Wales by Broad Age Group and Sex (revised 2010), Office for National Statistics, © Crown Copyright 2010.
- (2) Source of population estimates (used for calculation of the County, Regional and National rates): Estimated Resident Population Mid-2009 by Single Year of Age and Sex, Office for National Statistics, © Crown Copyright 2010.

## Deprivation

### Index of Multiple Deprivation 2007 - Overall Deprivation



Source: *Indices of Deprivation 2007, Department for Communities and Local Government, © Crown Copyright 2010.*

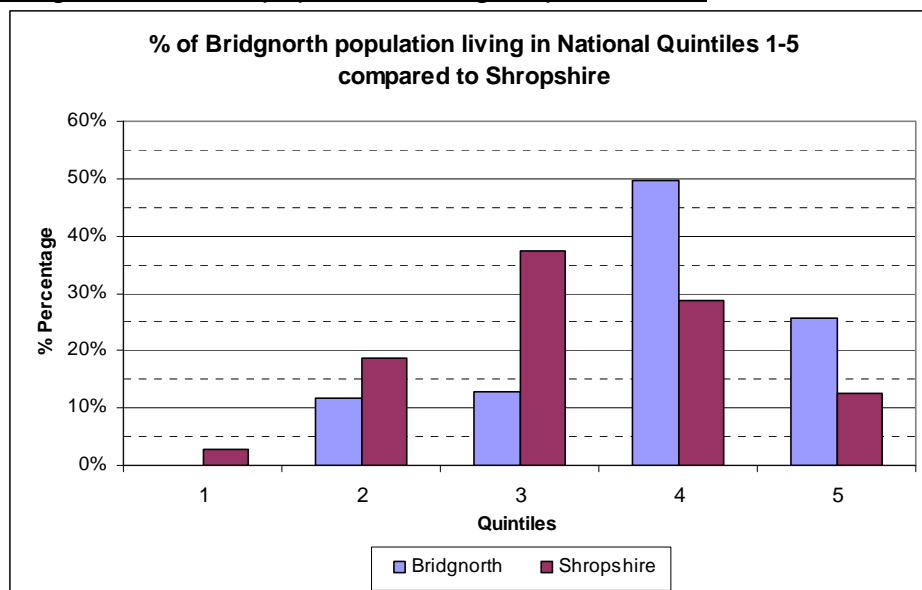
Note: There are five National Quintiles, 1=most deprived, 5=least deprived.

### Most deprived Lower Layer Super Output Area (LLSOA) in Bridgnorth

LLSOA Number	LLSOA Name	% Overall Population of Bridgnorth Living in LLSOA
E01028836	Bridgnorth West Ward	11.8

Source: *Indices of Deprivation 2007, Department for Communities and Local Government, © Crown Copyright 2010.*

## % of Bridgnorth LLSOA population living in quintiles 1-5



Source: Indices of Deprivation 2007, Department for Communities and Local Government, © Crown Copyright 2010.

## Housing and Households

Total number, type and size of dwellings/households in Bridgnorth Urban Area.

### Tenure

	Owner Occupied (owned outright)	Owner occupied (owned with a mortgage or loan)	Privately rented	Rented from a Housing Association/ Registered Social Landlord	Rented from other
<b>Bridgnorth no.</b>	1,750	2,143	424	141	156
<b>Bridgnorth % total households</b>	34.0	41.6	8.2	2.7	3.0
<b>Shropshire % total households</b>	35.2	37.0	9.1	3.8	4.4

Source: Table TE01 Tenure, 2001 Census, Office for National Statistics, © Crown Copyright 2010.

### Type and Size

	Detached	Semi-detached	Terraced	Purpose built block of flats or tenement	Flats, maisonettes or apartments in commercial buildings	Part of a converted or shared house (incl bedsits)	Caravan or other mobile or temporary structure	Total Dwellings
<b>Bridgnorth no.</b>	1,610	1,899	1,147	398	107	119	9	5,289
<b>Bridgnorth % total households</b>	30.4	35.9	21.7	7.5	2.0	2.2	0.2	100.0
<b>Shropshire % total households</b>	40.7	34.0	16.4	5.1	1.2	2.0	0.6	100.0

Source: Table D01 Dwellings, 2001 Census, Office for National Statistics, © Crown Copyright 2010.

Bridgnorth House prices (Land Registry 2007-2008, rounded to the nearest whole number)

Figures in £	Average (Mean) Price Paid	Median Price Paid	Lower Quartile Price Paid	Upper Quartile Price Paid
<b>2007</b>	209165	184000	154250	249975
<b>2008</b>	206723	185721	165000	227000

Source: Price Paid Data, Land Registry, © Crown Copyright 2010.

Monthly rental cost 2009 (Rightmove dataset, rounded to the nearest whole number)

Figures in £	Average (Mean) Rent Per Month	Median Rent Per Month	Lower Quartile Rent Per Month	Upper Quartile Rent Per Month
<b>Bridgnorth</b>	535	525	438	595

Source: © 2010 Rightmove.co.uk

Household income levels 2009 (Income X Dataset, rounded to the nearest whole number)

Figures in £	Average Income	Median Income	Lower Quartile Income	Upper Quartile Income
<b>Bridgnorth</b>	34710	31817	21451	45168

Source: Income X, © 2010 Acxiom Corporation.

## Transport & Infrastructure

### Journey to Work

	% of people aged 16-74 in employment	
	Bridgnorth Urban Area	Shropshire
<b>All People Aged 16-74 in Employment</b>	100.0	100.0
<b>People Who Work Mainly at or From Home</b>	10.6	13.4
<b>Underground; Metro; Light Rail; Tram</b>	0.1	0.1
<b>Train</b>	0.5	0.8
<b>Bus; Mini Bus or Coach</b>	1.5	2.6
<b>Motorcycle; Scooter; Moped</b>	0.5	0.9
<b>Driving a Car or Van</b>	62.2	59.0
<b>Passenger in a Car or Van</b>	6.7	6.3
<b>Taxi or Minicab</b>	0.2	0.3
<b>Bicycle</b>	0.9	3.5
<b>On Foot</b>	16.4	12.6
<b>Other</b>	0.4	0.6
<b>Public Transport</b>	2.1	3.5
<b>Motor Vehicle</b>	69.7	66.5

Source: Table T01 Journey to Work, 2001 Census, Office for National Statistics, © Crown Copyright 2010.

Notes:

1. Includes Train, Underground; metro; light rail; tram, bus; Mini Bus or coach
2. Includes Motorcycle; Scooter; moped, Driving a car or van, Passenger in a car or van, Taxi or minicab

## Car Ownership (Percentage of Total Households)

Percentage of cars or vans in Bridgnorth Urban Area.

	No car	One Car	Two cars	Three cars	Four or more cars	All cars and vans in the Area
% Bridgnorth Total Households	18.5	43.9	29.6	6.1	1.9	XXX
% Shropshire Total Households	17.7	44.3	29.4	6.5	2.1	XXX

Source: Table C01 Cars or Vans, 2001 Census, Office for National Statistics, © Crown Copyright 2010.

## Description of transport within Bridgnorth

Transport	Number	Name (Roads/Routes/Stations etc)
Main Roads		Include A442; A458; B4363; B4364; B4373
National Cycle Network	7	Include Bridgnorth; Mercian Way
All Shropshire Cycle Routes	7	Include Bridgnorth; Mercian Way

Source: Shropshire Council GIS Layers.

## Natural and historic environment

### Natural and historic environment designations in Bridgnorth

Designation	Number	Sum of Area	Name
Conservation Areas	2		Bridgnorth; Innage Gardens
Shropshire Wildlife Sites	1		River Severn (Bailey's Rough to Quatford)
Public Rights of Way (ROW)		around 10.6km	
National Inventory of Woodland and Trees		64.19 ha	
Conclusive Open Access Areas	1		The Grove
Long Distance Routes	1		Severn Way
Listed Buildings	244		Include Church of St. Leonard, Town Hall and Church of St Mary Magdalene
Scheduled Monuments	1		Bridgnorth Castle

Source: Shropshire Council GIS Layers.