

**LDF Implementation Plan and  
Local Investment Plan**

**Ludlow Place &  
surrounding  
area  
Place Plan**

**Version 24,  
24-01-11**

# **CONTENTS**

## **1. Introduction**

## **2. Ludlow place plan**

- 2.1 Vision for Ludlow
- 2.2 Ludlow Profile- local evidence
- 2.3 Community led planning in Ludlow
- 2.4 Ludlow Delivery Framework

## **3. Community Hubs place plan**

- 3.1 Vision for
  - Clee Hill
  - Onibury
- 3.2 Community Hub profiles
- 3.3 Community led planning in the Community Hubs
- 3.4 Delivery Framework for the Community Hubs

## **4. Community Clusters place plan**

## **5. Rural Hinterland place plan**

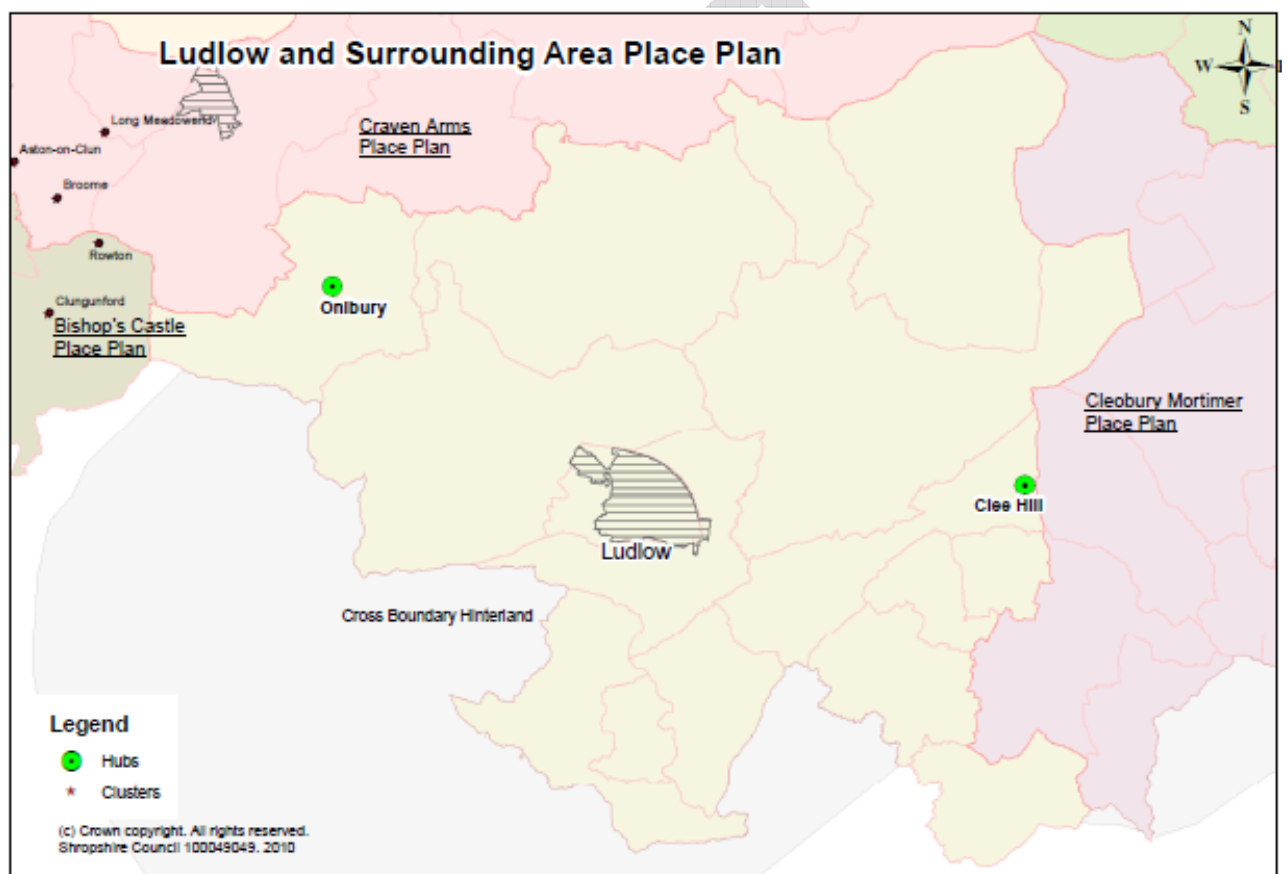
- 5.1 Vision for the rural hinterland
- 5.2 Rural Hinterland profile
- 5.3 Community led planning in the Rural Hinterland
- 5.4 Delivery framework for the Rural Hinterland

### ***Appendix 1- Ludlow Market Town Profile***

# 1. INTRODUCTION

## *What is this document?*

- 1.1 This document is the Place Plan for *Ludlow and its surrounding area*. It summarises the infrastructure and investment requirements needed to deliver the community vision and aspirations for Ludlow, its Community Hubs, Clusters and surrounding Rural Hinterland.
- 1.2 It covers the area in the map, below, which is based on the perceived area of influence for the main settlement, Ludlow, as identified by Ludlow Town Council.



- 1.3 However, whilst this Place Plan covers the area identified, it is important to note that it does not work in isolation, but is part of a set of 18 interlinked Place Plans, covering Shropshire's main settlements and their hinterlands. The above map provides an overview of the Place Plans bordering the Ludlow locality, in addition to the perceived cross border areas of influence, which lie outside Shropshire and provide a focus for cross border working with neighbouring local authorities and partners.
- 1.4 Within Ludlow and its surrounding area, a number of Community Hubs have been put forward by the local community (via parish councils in

the Ludlow locality), as part of the Local Development Framework. These are identified on the map and defined as settlements where limited development is needed to ensure that the local community becomes more sustainable. As such, development in these settlements will be based on community benefit, such as the provision of local facilities, economic development or housing for local needs. Community Clusters have the same role as Hubs, but comprise a collection of networked settlements, which together require limited further development to improve sustainability. As no Clusters have been identified in this locality, the remaining area is defined as countryside, where further development will be strictly controlled and only allowed in exceptional circumstances

- 1.5 However, there is an ongoing opportunity for communities to 'opt in' as either a Hub or a Cluster at a later stage in the Local Development Framework Plan period (2006-2026), for example through a review of local parish plans. The Council will therefore continue discussions with the local community to identify the community benefits that can be delivered through development.
- 1.6 In identifying the local infrastructure and investment requirements for Ludlow, its Community Hubs, Clusters and Rural Hinterland, extensive discussions have been undertaken with relevant town and parish councils, in addition to local infrastructure and service providers. This is part of an ongoing process of community led working, which will ensure that the Ludlow Place Plan is kept up to date and continually reflects local needs and priorities.
- 1.7 Whilst this initial version of the Ludlow Place Plan primarily focuses on the investment requirements for Ludlow, work is ongoing to identify the infrastructure and investment needs for Ludlow's Hubs, Clusters and the Rural Hinterland. Detailed discussions with parish councils within the Ludlow locality are therefore ongoing and will inform the updated version of the Ludlow Place Plan in due course.
- 1.8 The Place Plans form part of the Shropshire Local Development Framework (LDF) Implementation Plan and Local Investment Plan. As outlined in figure 1, this package of documents is aimed at ensuring the delivery of sustainable places in Shropshire.
- 1.9 The LDF Implementation Plan outlines all the infrastructure requirements which are needed to support the level and location of development for Shropshire, as outlined in the Core Strategy. It covers physical infrastructure (transport, energy, water, waste, minerals and ICT/digital), economic infrastructure (regeneration, business growth and employment, skills training) social infrastructure (education, health and community facilities) and green infrastructure (open spaces, recreation and sporting facilities and green public realm) requirements.

- 1.10 The Local Investment Plan (LIP) will help the Council and its partners to work together to coordinate various funding streams.
- 1.11 The 18 Place Plans provide detailed information on a place by place basis. They identify the vision for a specific place and the investment needed to deliver that vision. As such, they seek to bring together “bottom up” priorities, originating from community aspirations, with “top down” schemes and actions, originating from large organisations such as Shropshire Council. They will be used to assist in prioritising which are the most important schemes within a particular place, given limited resources, and will help provide a delivery programme which will create and maintain Ludlow and its surrounding areas as sustainable communities.

### ***How is this document structured?***

- 1.12 As the Place Plan for *Ludlow and its surrounding area*, this document identifies and divides the infrastructure and investment requirements for Ludlow, the Community Hubs, Clusters and Rural Hinterland, into the following themes:
- Housing and cohesive, sustainable communities
  - Economic investment and opportunity
  - Social and community infrastructure
  - Environment and climate change
  - Transport and accessibility
- 1.13 Each infrastructure requirement has been identified according to whether it is considered to be ‘critical’, ‘priority’ or ‘key’ and colour coded according to whether there are any known barriers to it’s delivery.
- 1.14 Infrastructure schemes which have been coloured **red** are known to have important barriers which are preventing their delivery, such as a lack of funding. Infrastructure schemes which have been coloured **amber** are known to have some barriers to delivery such as an incomplete set of funding or no known timescale for delivery. Schemes that are coloured **green** have no known barriers to delivery and therefore have identified partners, funding and timescales for delivery.
- 1.15 Critical infrastructure is that which is fundamental to development, such as electricity, water and road access, without which development can simply not take place. Priority infrastructure is that, which for a given point in time has been identified as a particular priority, in order to meet a specific need or requirement. Key infrastructure reflects the full range of infrastructure and investment needs that are required to create and maintain places as sustainable communities.

## ***How will this document be used to deliver sustainable places in Shropshire?***

- 1.16 Through ongoing engagement with the local community, this plan seeks to record and convey the priorities for Ludlow and its surrounding area to partners who are in a position to invest money and deliver schemes to meet local needs.
- 1.17 The Plan will also be used to inform what contributions towards local infrastructure will be sought from development within Ludlow and its surrounding area, through the Community Infrastructure Levy and developer contributions, to meet community priorities.
- 1.18 In summary therefore, this Place Plan has the following roles:

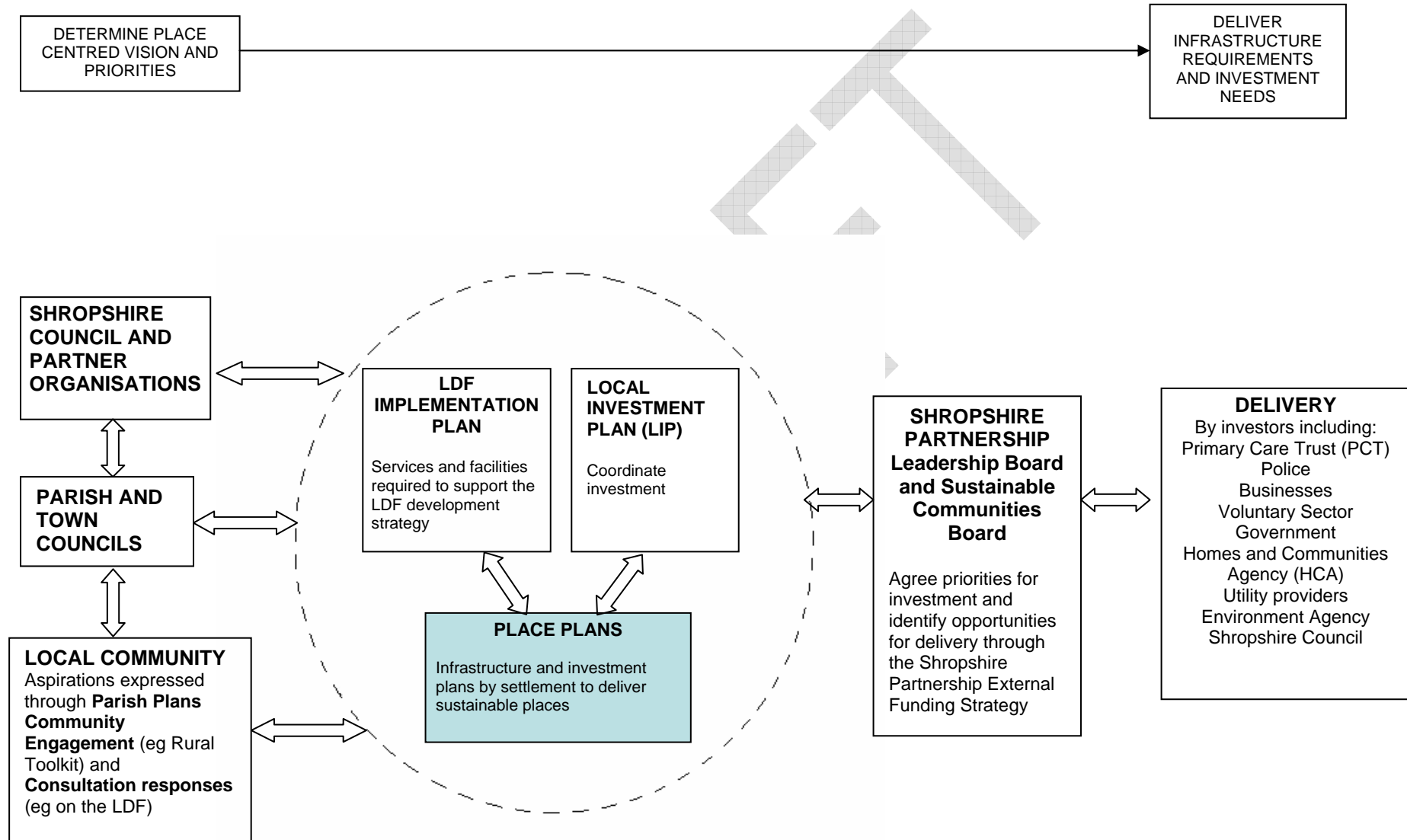
### **DECISION-MAKING PROCESS**

- Provides a mechanism for taking decisions through the appropriate channels

### **CONTENT**

- Provides details of how the vision will be delivered in Ludlow and its Community Hubs, Clusters and the Rural Hinterland.
- Records and conveys the agreed shared priorities to partners who are in a position to invest and deliver;
- Identifies priorities for contributions towards local infrastructure from development, through the Community Infrastructure Levy / tariff and through other external funding sources.

**Figure 1: Delivering sustainable places**



## 2. LUDLOW PLACE PLAN

### 2.1 VISION FOR LUDLOW

The vision for *Ludlow* is found in the Core Strategy Policy CS3, and is as follows:

***Ludlow will provide a focus for development, whilst respecting its historic character.***

***Core Strategy Policy CS3***

### 2.2 LUDLOW PROFILE

A town profile for Ludlow is provided in Appendix 1. This provides an overview of the social, economic and environmental characteristics of Ludlow, based on the latest available local evidence.

### 2.3 COMMUNITY LED PLANNING IN LUDLOW

#### **Community Led Plans**

Ludlow Town Council is currently developing a new Town Plan. The below are the priorities and needs identified from the initial draft plan, although further consultation will be undertaken before the plan is finalised by the Town Council.

#### *Ludlow Town Plan (draft 2010-2015 plan)*

- Encourage tourism, and maximise enjoyment, spend, likelihood of return
- Build and maintain the unique identity of Ludlow
- Develop publicity especially linked local websites
- Provide for disabled
- Improve facilities eg toilets, audio information, signage
- Support festivals, rallies and special activities
- Improve Park and Ride signage, Sunday and evening buses
- Encourage Shropshire Council to improve and maintain regularly all signage
- Promotion of the economy, job diversity, and availability by all possible means
- Support businesses eg provision of training
- Support farming and food industry
- Support for development of transport hub, but only after local consultation on need, design etc
- Restrict and simplify signage
- Improvement to A49 junctions
- Encouragement of cycling
- Encouragement of walking, pedestrian priority and pedestrian pathways
- Weeping Cross roundabout
- Pavement on Gravel Hill

- Enforcement of existing restrictions to prevent large lorries and coaches entering central area
- Seek and improved bus service, particularly connecting Ludlow and surrounding villages such as Burford. A service bus not just a responsive bus
- Develop a vision for the town centre
- Seek appointment of a town centre manager
- Maintain the architectural heritage of Ludlow
- Seek best solution to parking problems
- Seek a more effective use of accommodation above shops
- Seek a fairer policy on A boards
- Encourage a crime free, welcoming environment in the town
- Support initiatives aimed at carbon emissions reduction
- Support moves to introduce carbon neutral generation of electricity
- Support built heritage environment and the preservation of the landscape setting of Ludlow
- Promote health
- Continue policy of use of LED lights for Christmas lighting
- Play areas
- Provision of youth activities, youth training , drop in facilities
- Coordinate and integrate youth activities
- Safeguard existing leisure provision and enhance
- Promote an extended riverside path
- Encouragement to special events such as festivals, rallies and Green Fair
- Maintain a high standard of maintenance in all Council owned leisure/amenity areas
- Provision of adequate and improved services for the elderly
- Support existing services for the elderly
- Seek to promote services for the elderly and where inadequate, to fill gaps
- Encourage development of a multiuse building with services similar to Mayfair Church Stretton
- Annual party for the elderly
- Health
- Lighting
- Promote provision of affordable to rent or to buy housing for local people.

### **Local Joint Committee**

Ludlow Town is located within the Ludlow and Clee Local Joint Committee Area. The following needs and priorities have been raised by the local community as part of Local Joint Committee meetings:

#### *Ludlow and Clee Local Joint Committee*

- Road safety, speeding and HGVs
- Rural transport and parking
- Youth opportunities and facilities
- Police and community safety
- Streetscene and litter
- Ludlow town bus routes
- Local health care provision (New Ludlow hospital)

### **Other Community Consultations**

## **Local Development Framework Core Strategy – Policy Directions Consultation (August-October 2009)**

*Ludlow Town Council representations on the Core Strategy*

(Representation reference no 06264/00001/007)

- More business investment is needed in Ludlow
- More businesses use land should be identified

## **Local Development Framework Core Strategy – Final Plan Publication (January-March 2010)**

*Ludlow Town Council representations on the Core Strategy*

(Representation reference no CORE STRATEGY/09RSUB/06264/00002/001)

- There is a need for adaptable housing, especially care homes to cater for an ageing population.
- Affordable housing is a major issues because of low incomes and unemployment
- Transport hub
- Employment land requirements
- Opportunities for more walking and cycling
- Developing opportunities for more walking and cycling and creating the conditions to encourage this

## **Local Development Framework Site Allocations and Management of Development DPD (SAMDev) – Issues and Options Consultation (April- June 2010)**

*Ludlow Town Council representations on the SAMDev*

(Representation reference no SAMDEV DPD/04IOP/002398/00003)

- Improvements to sports and recreation facilities, including the Wheeler Road Play and Recreational Area which requires pathways leading to the skate park and also the provision of a scooter park or extension to the skate park.
- Replacing the Boxing Club with a modern fit for purpose community centre  
Additional pathways and pavements including the development around Ludlow Castle. Gravel Hill requires an improved pavement to provide for buggies & motorised scooters
- Consideration for a 'pedestrian priority' area in Ludlow
- Provision of cycle paths
- Improved street lighting
- New hospital
- Provision of adequate drainage for new developments and consideration of the flooding issues in the Steventon New Road, Temeside and Lower Corve Street areas and also areas of Linney adjacent to the Linney flood plain. In addition, particular emphasis should be given to concerns regarding any development off Foldgate Lane where a small ditch to the rear of Greenacres carries water through the railway embankment to Steventon New Road and has been the subject of serious drainage problems and flooding in the past.

## **Investing in Shropshire's Future- Local Infrastructure and Investment Workshop with Ludlow Town Council (20<sup>th</sup> September 2010)**

- Ludlow's historic character is an important asset and needs to be preserved
- There is a need to improve street lighting and signage in the town
- Energy security

- Food security
- Flooding
- Lack of public toilets at the Eco Park is an issue
- There is a need to improve the transport facilities for the elderly and disabled and parents of small children, to provide access into the town
- There is a need for more bus and car parking
- Rail infrastructure improvements are required in terms of frequency of services and the provision of more carriages.
- Presence of large vehicles in the town centre is an issue
- Affordable housing provision is a priority as it is difficult to retain young people within the town.
- Opportunities for skill building and training for young people is needed
- The provision of care for the community is a key issue. There is a requirement for nursing home provision and for hospital beds and associated services.

### **Ludlow Community Toolkit Event – 19<sup>th</sup> October 2010**

The following activities, facilities, services and infrastructure were considered to be the most important community assets by the event attendees:

#### Activities:

- Arts and heritage events
- Sports activities
- Walking and rambling activities
- Youth groups and clubs

#### Facilities:

- Community centre/village hall
- Parking
- Youth shelter or pod

#### Services:

- Healthcare
- Learning and training opportunities
- Shops

#### Infrastructure:

- Employment land
- Job opportunities
- Tourism and heritage infrastructure

The following points were raised by members of the community as ideas for projects to revitalise the town:

- Better use of Assembly Rooms
- Affordable rental housing (straw bale?) for key workers
- More affordable housing for local people
- Project to identify gaps/links of community centres in town eg BMC/Rockspring/Assembly Rooms and others
- Small rentable (by the hour) kitchens for small food businesses
- Develop a “Heritage Skills Centre“ in Ludlow with opportunities to learn traditional building/constructions skills from local craftsmen
- Make Ludlow Assembly Rooms carbon zero and a local example of environmental sustainability

- A major project producing energy renewables preferably on a community sharing basis
- Visitor /interpretation centre for visitors
- Put sculpture on the roundabout to show pride in town, increase tourism and public art
- CCTV
- Saving land at East End of St Laurence's from being developed. St Laurence's is so important
- Area of land/open space on the edge of residential area for exercising dogs etc – Harry Tuffin's Field used to be that space

Full information and feedback from the Ludlow Toolkit event is available at:  
(<http://www.shropshire.gov.uk/factsfigures.nsf/open/C6BE79E37024001580257776>)

DRAFT

## 2.4 INFRASTRUCTURE AND INVESTMENT DELIVERY FRAMEWORK FOR LUDLOW

Infrastructure or investment requirements and opportunities	Critical Priority or Key	Lead delivery partner	Other partners	Cost	Funding secured	Funding gap	Timescale for delivery	Potential funding sources	Notes
<b>Housing and cohesive, sustainable communities</b>									
Developer contribution to affordable housing	KEY	Shropshire Council  (Development services)	RSL potentially	£75,000	N/A	N/A		Developer contributions	Developer contributions in relation to land at Fishmore Road. Funds awaited from contractors – but may be subject reduction on viability grounds (see section on affordable housing provision below).
Developer contribution to affordable housing	KEY	Shropshire Council  (Development services)	RSL potentially	£45,000	N/A	N/A		Developer contributions	Developer contributions in relation to Abbey Gardens, Lower Galdeford. Funds awaited from contractors.

Infrastructure or investment requirements and opportunities	Critical Priority or Key	Lead delivery partner	Other partners	Cost	Funding secured	Funding gap	Timescale for delivery	Potential funding sources	Notes
Affordable housing provision	PRIORITY	Shropshire Council  (Development Services- Strategy and Development)	Developers  Registered Providers  Homes & Communities Agency  Landowners  Town & Parish Councils				2010/11 to 2013/14	Homes & Communities Agency Grant  Shropshire Council capital programme  Registered Providers  Developer cross-subsidy  Developer cash contributions	33% of all new housing in Shropshire will be affordable housing, delivered through: <ul style="list-style-type: none"> <li>• appropriate % of open market housing linked to developments</li> <li>• 100% affordable “exceptions sites”</li> <li>• better use of empty properties.</li> </ul> <p>Fishmore Road, Ludlow - Mixed site with planning permission for 93 units with c.40% being affordable. However, due to extreme issues regarding viability the developer is seeking to revise the scheme and reduce the number of affordable units. This will be subject to professional assessment and is likely to result in a new planning application being</p>

Infrastructure or investment requirements and opportunities	Critical Priority or Key	Lead delivery partner	Other partners	Cost	Funding secured	Funding gap	Timescale for delivery	Potential funding sources	Notes
									<p>submitted.</p> <p>Clee View, Ludlow – South Shropshire HA has planning permission for 5 social rented units. However, to date the scheme has failed to attract HCA funding.</p> <p>South Shropshire HA also has a couple of potential future schemes in Ludlow for redevelopment of their existing housing stock that will require HCA funding.</p> <p>Delivery in this market town area includes small scale exceptions sites in the rural hinterland, including opportunistic “build your own affordable home” sites.</p>
Housing for vulnerable people	PRIORITY	Shropshire Council  (Community Services- Housing	Registered Providers/ Specialist Providers				Ongoing	Supporting People Funding/ Private	Includes provision for the frail and those with specialist needs eg. the very elderly; people

Infrastructure or investment requirements and opportunities	Critical Priority or Key	Lead delivery partner	Other partners	Cost	Funding secured	Funding gap	Timescale for delivery	Potential funding sources	Notes
		Services)						investment/ Homes & Communities Agency Grant	requiring supported living such as those with dementia/ health difficulties/ learning disabilities; gypsies and travellers; victims of domestic violence, prevention of homelessness, move on accommodation from supported housing, etc.
Improving and adapting existing housing	KEY	Shropshire Council / Registered Providers / Home owners  (Community Services- Housing Services)	Keep Shropshire Warm / Developers	Countywide £6.5 million for social housing; £951,000 for private sector; £2.6 million for disabled facilities grants			2010-2011	CLG grant / Shropshire Council budget / Regional Housing Board	Includes: <ul style="list-style-type: none"> <li>energy efficiency to reduce carbon emissions and tackle fuel poverty;</li> <li>upgrading social housing to meet the Decent Homes standard;</li> <li>adaptations to meet changing needs, including Disabled facilities grants;</li> <li>bringing empty homes back into use.</li> </ul>

Infrastructure or investment requirements and opportunities	Critical Priority or Key	Lead delivery partner	Other partners	Cost	Funding secured	Funding gap	Timescale for delivery	Potential funding sources	Notes
<b>Economic investment and opportunity</b>									
Market Towns Revitalisation Programme – Larger Market Towns Capital Programme	KEY	Shropshire Council  (Development Services- Economic Development)	Local businesses, residents, investors	£400,000 allocated			2010-2015	Shropshire Council capital programme. Match funding from other sources will be explored including LJC funding.	Programme to support a range of capital projects which meet the Market Town Revitalisation Programme objectives.
Appoint Town Centre Manager	KEY	Ludlow Town Council						Town Council seeking external funding	The Town Council are seeking external funding to appoint a Town Centre Manager, who would have a wide range of functions, including coordinating efforts, countering the loss of facilities/services, maintaining and encouraging a vibrant market and speciality markets, promoting the attractiveness of the town centre, working to reduce number of empty shops/find temporary use,

Infrastructure or investment requirements and opportunities	Critical Priority or Key	Lead delivery partner	Other partners	Cost	Funding secured	Funding gap	Timescale for delivery	Potential funding sources	Notes
									promoting business recycling, encourage participation of Ludlow Assembly Rooms and other providers, Investigate feasibility of pedestrian priority.
Ludlow Eco Park Phase II employment land	KEY	NHS	Shropshire Council				£1million		Expansion of employment land and provision of new community hospital.  The Town Council has identified that there is a need for public toilets at the Eco Park or an arrangement for the public to use toilets within the offices.
Community Hospital redevelopment	KEY	NHS	Shropshire Council				aspirational	Dependant on NHS funding	Potential mixed use for housing and employment once funding for new hospital has been clarified- need to identify new employment land to replace loss of eco-park
Adoption programme for Council business parks	KEY	Shropshire Council (Development Services- Economic		£1million			2010-15	Shropshire Council	Ludlow Eco Park Ludlow Business Park

Infrastructure or investment requirements and opportunities	Critical Priority or Key	Lead delivery partner	Other partners	Cost	Funding secured	Funding gap	Timescale for delivery	Potential funding sources	Notes
		Development)							
Support for business start up and business growth	PRIORITY	Shropshire Council  (Development Services- Economic Development)	Business Link	£320,000 (countywide)			2009-2011	Shropshire Council capital programme	Delivered through the Shropshire Business Enterprise Grants, supports retail business start up and growth. . £40,000 remains in the budget unless additional funding can be secured.
Marketing rural Shropshire as a tourism destination	KEY	Shropshire Council  (Development Services- Economic Development)	Destination Management Partnership, including Telford and Wrekin	£150,000 (countywide)			2009-2012	RDPE	Strategic support for tourism marketing and infrastructure.  The Council's Leisure Services Team has identified the opportunity for a bunk house YHA facility, to attract young tourists to the area.
Improvements to the streetscene- install tourist attraction signage, improve paving.	KEY	Ludlow Town Council	Shropshire Council					Ludlow Town Council budget	Ludlow Town Council is keen to install local tourist attraction signage and has identified the opportunity to use york paving for the pavements, in keeping with the historic nature of the town.
Support to tourism industry through	KEY	Destination Manage-	Telford and Wrekin	£110,000 (countywide)			2010-2011	AWM	This is the final year of a 3 year contract.

Infrastructure or investment requirements and opportunities	Critical Priority or Key	Lead delivery partner	Other partners	Cost	Funding secured	Funding gap	Timescale for delivery	Potential funding sources	Notes
support to improve quality, skills, ICT and marketing		ment Partnership Shropshire Council (Development Services- Economic Development)	Council						Finishes March 2011
Rural Broadband Intervention Programme- Pilot project between Ludlow, Tenbury Well and Leominster	PRIORITY	Advantage West Midlands	Shropshire Council, Herefordshire Council, Worcestershire County Council, Malvern Hill District Council, Chambers of Commerce	£440,000			2010-2012	RDPE funds secured by AWM	The project will establish a wireless technology Pilot in the area between Ludlow, Tenbury Wells and Leominster. AWM is looking to award a contract to a private sector company to install, own and maintain a network of wireless equipment and to lease 'Backhaul' to supply high speed broadband to parts of the rural West Midlands. AWM has secured approx £440,000 of RDPE funds to pay for the network for a period of 2 years after which time the network must be self funding.

Infrastructure or investment requirements and opportunities	Critical Priority or Key	Lead delivery partner	Other partners	Cost	Funding secured	Funding gap	Timescale for delivery	Potential funding sources	Notes
									It is hoped that this approach will encourage internet service providers to deliver rural broadband to these areas which are unlikely to receive infrastructure investment in the long term. It will also bring competition to some areas where there is currently none.
<b>Social and community infrastructure</b>									
Developer contribution towards maintenance of play area	PRIORITY	Shropshire Council Community Services- Culture and Leisure)	Parish Council	£29,674	N/A	N/A		Developer contribution	Developer contributions in relation to land between Parys Road and Riddings Road
Developer contribution towards open space	PRIORITY	Shropshire Council Community Services- Culture and Leisure)	Parish Council	£32,000	N/A	N/A		Developer contribution	Developer contributions in relation to Ludlow football club
Developer contribution towards play equipment	KEY	Shropshire Council Community Services- Culture and Leisure)	Parish Council	£6,490	N/A	N/A		Developer contribution	Developer contributions in relation to land at Lower Galdeford and Clee View. Funds awaited from contractors.

Infrastructure or investment requirements and opportunities	Critical Priority or Key	Lead delivery partner	Other partners	Cost	Funding secured	Funding gap	Timescale for delivery	Potential funding sources	Notes
New Primary Care Centre health facility	PRIORITY	PCT	Through the Door To Healthy Living				2014		<p>Developer not yet appointed (as at June-10) Linked to plans for the redevelopment of the hospital and GPs, with the aim to co-locate the services on one site to serve South Shropshire. Site to include 2 GPs and a community hospital. Site not yet secured.</p> <p>Through the Door To Healthy Living have identified potential for the new medical facility to include integrated healthy lifestyle activities by having built in space for exercise and cooking facilities.</p>
Replacement police section station	KEY	West Mercia Police	Developers and Shropshire Council	£4 million			10-15 years	West Mercia Police and developer contributions	New Section Station to be developed in conjunction with new housing development in Ludlow.
Review of primary educational facilities to ensure sufficient school places	PRIORITY	Shropshire Council (Education)	Developers	Dependent upon extent and location of			Dependent upon outline of full planning	Developer contributions, Primary Capital	An initial assessment has identified that there are unfilled primary places in this area and that the

Infrastructure or investment requirements and opportunities	Critical Priority or Key	Lead delivery partner	Other partners	Cost	Funding secured	Funding gap	Timescale for delivery	Potential funding sources	Notes
				develop't			permissions and developer's timescales	Programme	existing primary education infrastructure can be expanded, in combination with school organisation changes, to allow for further additional provision. Beyond this, any additional housing would potentially require a new school and/or new school site. The normal position will be that an assessment of school place provision will be made before planning permission is granted to decide whether the existing school infrastructure is able to cope and whether or not developer contributions are required.
Review of secondary educational facilities to ensure sufficient school places	PRIORITY	Shropshire Council (Education)	Developers	Dependent upon extent and location of develop't			2015-2026	Developer contributions, Primary Capital Programme	In general, secondary schools will have more capacity to absorb additional development than primary schools, until at least 2015. However, beyond this period,

Infrastructure or investment requirements and opportunities	Critical Priority or Key	Lead delivery partner	Other partners	Cost	Funding secured	Funding gap	Timescale for delivery	Potential funding sources	Notes
									consideration may need to be given to the provision of extra secondary school places.'
Ludlow Assembly Rooms	KEY	Shropshire Council  (Community Services- Culture and Leisure)		£2-3 million					In need of modernisation.  The Town Council has identified the potential for the Assembly Rooms, Museum and Visitor Centre to be made into a Heritage Centre.
Provision of a multi functional use building	KEY	Shropshire Council  (Community Services- Culture and Leisure)					aspirational		Potential for Ludlow Library to become a multi-functional facility with learning and development facilities, a job centre and the museum.  South Shropshire Furniture Scheme (SSFS) did not feel that Ludlow Library was appropriate for the multiuse facility required and have advised that they would like instead to see the provision of a multiuse building similar

Infrastructure or investment requirements and opportunities	Critical Priority or Key	Lead delivery partner	Other partners	Cost	Funding secured	Funding gap	Timescale for delivery	Potential funding sources	Notes
									to Mayfair Centre (Church Stretton). SSFS have advised that they are working in partnership with Rockspring Community Centre and there is certainly the potential for a vibrant and positive hub for community engagement and the provision of training opportunities for the unemployed. The SSFS have advised that they are already part funded to deliver enhanced services.
Leisure centre	KEY	Shropshire Council  (Community Services- Culture and Leisure)	Teme Leisure				2010-2011		Refurbishment of facilities. Investment into the leisure centre is planned for 2010-2011. There is potential to use the leisure facility as a hub for cycle routes and short circular walks.
Various rights of way improvements including	KEY	Shropshire Council  (Community	Ludlow Parish Paths Partnership				A survey is being carried out in	Shropshire Council capital	Creation and enhancement of the Shropshire Way and

Infrastructure or investment requirements and opportunities	Critical Priority or Key	Lead delivery partner	Other partners	Cost	Funding secured	Funding gap	Timescale for delivery	Potential funding sources	Notes
development of the Shropshire Way and of new circular walks, Removal of stiles and enhanced signage to ensure easier access for all		Services- Culture and Leisure)					2010/11 to determine works required	programme / LTP	creation of new circular walks to promote as a walking destination. Promotion of easier access routes and 'health walks' with Walking for Health schemes
Provision of allotments	KEY	Shropshire Council  (Community Services- Culture and Leisure)	Town Council, developers, Pre School Learning Alliance					Developer contributions	The PPG17 Study has identified an under provision of allotments.  The Town Council want to increase provision at Linney Park and Dinham. The Pre School Learning Alliance has identified the potential to include allotments for pre-school/family use as part of the Rockspring nursery.
Play provision	KEY	Shropshire Council  (Community Services- Culture and Leisure)	Town Council, developers						The Town Council has identified the need for additional play provision in Ludlow, including the potential for 'trim parks' for the over 50s.
Outdoor Sports	KEY	Shropshire	Town					Developer	Deficit of mini soccer

Infrastructure or investment requirements and opportunities	Critical Priority or Key	Lead delivery partner	Other partners	Cost	Funding secured	Funding gap	Timescale for delivery	Potential funding sources	Notes
provision - Minimum of 1 multi pitch site providing for competition and training with appropriate facilities and accessibility		Council	Council, developers, Sport England					contributions	pitches. Seek to make improvements to existing pitches.
Advice Services countywide	KEY	Citizens Advice Bureau		£150,000 countywide					AWM will make funding available for Citizens Advice Service or similar to provide services
Playbuilder Grant	KEY	Shropshire Council  (Community Services- Culture and Leisure)		£1,120,000 countywide			2009-11	Shropshire Council capital programme	Tollgate Road Play area received funding from Playbuilder in April 2010.
Shropshire Hills Leader Programme (focus on hinterland not the market town)	KEY	AONB with Shropshire Council as accountable body	AONB Partnership	£1.32 million			2009-2013	RDPE	Supports basic services, village renewal and development, conserving/upgrading rural heritage, training and information, co-operation. Impact also on environment. Most of the funding is committed. Eligibility criteria are complex.

Infrastructure or investment requirements and opportunities	Critical Priority or Key	Lead delivery partner	Other partners	Cost	Funding secured	Funding gap	Timescale for delivery	Potential funding sources	Notes
<b>Environment and climate change</b>									
Upgrade to Ludlow Sewage Treatment Works	CRITICAL	Severn Trent Water	Environment Agency				2010-2015	Severn Trent Water's business plan (AMP)	The Shropshire Water Cycle Study identifies that there is no current hydraulic capacity at the Ludlow Waste Water Treatment Works. However, there are no known physical constraints that would prevent additional capacity being provided at the treatment works.
Upgrades to the sewerage network	CRITICAL	Severn Trent Water					The sewer network is currently being reviewed by Severn Trent Water and will continue to be reviewed every 6 months as part of the water company's sewer	Options are currently being appraised by Severn Trent Water as part of their capital investment programme.	All the flows from the north of Ludlow are pumped south under the river to a gravity sewer upstream of Ludlow STW by a 300m diameter rising main approx 420m long. There are isolated flooding problems on a small sub catchment in the centre of Ludlow (east of the railway) but this problem has recently been deferred due to its high cost. However, this flooding problem should

Infrastructure or investment requirements and opportunities	Critical Priority or Key	Lead delivery partner	Other partners	Cost	Funding secured	Funding gap	Timescale for delivery	Potential funding sources	Notes
							network plans to allow issues to be addressed in a timely manner		not be affected by future development locations, although detailed modelling would be required, once specific development locations are available. There are also known hydraulic restrictions to the south east of Ludlow (south of Sheet Road) which may be susceptible to additional development flows. To the east of Ludlow there are several combined sewer overflows which could be affected by development to the north west of Ludlow. Once specific development locations are known, it is recommended that further assessment be undertaken.

Infrastructure or investment requirements and opportunities	Critical Priority or Key	Lead delivery partner	Other partners	Cost	Funding secured	Funding gap	Timescale for delivery	Potential funding sources	Notes
Surface Water Management Plan	PRIORITY	Shropshire Council  (Development Services- Highways and Transportation)	Severn Trent Water, Environment Agency				aspirational	Shropshire Council capital programme	Assessment of surface water flood risk in Ludlow, development of hazards maps and an action plan for addressing the issues identified.
Biogas plant (energy from waste)	KEY	Shropshire Council	DEFRA					Trial plant with funding from DEFRA	Runs on co-collected municipal and commercial food waste to produce electricity and fertiliser.
River Teme Corridor	KEY	Environment Agency	Shropshire Wildlife Trust,					Environment Agency/ Shropshire Wildlife Trust	Enhancement works to the River Teme, Whitcliffe area, Dinham Green and Gallows Bank which are key sites.
Extend riverside path	KEY	Ludlow Town Council	Landowners/ Shropshire Council					Landowners/ grants/ Whitcliffe Commoners/ Shropshire Wildlife Trust	The Town Council are keen to work with landowners and Shropshire Council to extend the riverside path from Bread Walk to Charlton Arms
River Teme Hydro Electric Scheme	KEY	Ludlow Town Council/ Environment Agency	Shropshire Council				aspirational		The Town Council recognise the potential for energy production from the Teme Weir.

Infrastructure or investment requirements and opportunities	Critical Priority or Key	Lead delivery partner	Other partners	Cost	Funding secured	Funding gap	Timescale for delivery	Potential funding sources	Notes
Street lighting-conversion to minimise electricity	KEY	Ludlow Town Council						Ludlow Town Council budget	The Town Council are keen to convert Ludlow's street lighting to minimise electricity consumption, including light sensitive controls
METNET- Targeted business support to Environmental Technology SMEs to improve their competitiveness and productivity.	KEY	Shropshire Council  (Development Services- Economic Development)	Hereford'e Council, Worcest'hire Council and Telford and Wrekin (Marches LEP)	£351,531 (across partnership area including Shropshire)			Up to 31/03/2012	ERDF, AWM	The Marches Environmental Technologies Network (METNET) is a business network within the Marches LEP area. There is a particular emphasis on engagement, collaboration and innovation
Provision of natural and semi natural open space	KEY	Shropshire Council	Town Council, developers					Developer contributions	Ludlow currently has a large deficit in the provision of natural and semi natural open space.
<b>Transport and accessibility</b>									
Developer contribution to roads, drainage and services to adoption	PRIORITY	Shropshire Council  (Development Services- Highways and Transportation)		£11,720	N/A	N/A		Developer contribution	Developer contributions in relation to land adjacent to Riddings Road, Ludlow – commuted sum
Developer contribution to traffic	KEY	Shropshire Council		£10,000	N/A	N/A		Developer contribution	Developer contributions in relation to land at

Infrastructure or investment requirements and opportunities	Critical Priority or Key	Lead delivery partner	Other partners	Cost	Funding secured	Funding gap	Timescale for delivery	Potential funding sources	Notes
calming and to construct and maintain 4 parking spaces		(Development Services- Highways and Transportation)							Fishmore Road and Coach depot. Funds awaited from contractors.
Improvement to bus infrastructure	KEY	Shropshire Council  (Development Services- Highways and Transportation)		£500,000			2011-2026	Developer contributions/ LTP funding	To include: <ul style="list-style-type: none"> <li>• Bus Interchange and Information Point improvements</li> </ul> <p>The Town Council have highlighted the need for improved bus services, particularly connecting Ludlow with surrounding villages such as Burford with a regular bus service rather than just a 'responsive' service.</p>
Develop and improve the cycle and pedestrian network in Market Towns	KEY	Shropshire Council  (Development Services- Highways and Transportation)		£0.5-2 million			2011-2.26		Projects to be identified in LTP3 under a proactive programme of improvement to footways, ramps, crossings and signals  However, most development site options would require provision of

Infrastructure or investment requirements and opportunities	Critical Priority or Key	Lead delivery partner	Other partners	Cost	Funding secured	Funding gap	Timescale for delivery	Potential funding sources	Notes
									<p>a new foot/cycle bridge over the river of A49.</p> <p>The Town Council are keen for pedestrian priority areas to be introduced in the old town and for the Ludlow 21 Cycling Plan to be adopted. The Town Council have also highlighted the pavement on Gravel Hill.</p>
Local highway improvements, traffic management, parking provision and speed and safety management	KEY	<p>Shropshire Council</p> <p>(Development Services- Highways and Transportation)</p>		£500,000			2011-2026	Developer contributions/ LTP funding	<p>To include:</p> <ul style="list-style-type: none"> <li>Car parking provision and traffic calming</li> </ul> <p>The Town Council are keen for a roundabout to be introduced on the A49 north of Ludlow. The Town Council have also highlighted the Weeping Cross roundabout.</p>

Infrastructure or investment requirements and opportunities	Critical Priority or Key	Lead delivery partner	Other partners	Cost	Funding secured	Funding gap	Timescale for delivery	Potential funding sources	Notes
Ludlow station improvements	KEY	DfT	Arriva Trains Wales				2010	DfT via National Stations Improvement Scheme	<p>The scheme is aimed at improving the ambience of the station for passengers. Work includes improvements to station shelters and provision of 3 line displays. In particular there is a tendency for local youths to congregate in the existing solid shelter on the northbound platform. Arriva Trains Wales are proposing to replace this shelter with a modern transparent design</p> <p>The Town Council have identified the need for a new ramp to be provided at the station to allow for disabled access.</p>
Park and Ride facilities linked to the railway station	KEY	Shropshire Council  (Development Services- Highways and Transportation)					aspirational		Potential opportunities for Park and Ride facilities linked to the railway station.

### **3. COMMUNITY HUBS PLACE PLAN FOR THE LUDLOW AREA**

#### **3.1 VISION FOR COMMUNITY HUBS**

The vision for Community Hubs is found in the Core Strategy Policy CS4, and is as follows:

***Community Hubs will have development that helps to rebalance rural communities by providing facilities, economic development or housing for local needs that is of a scale appropriate to the settlement.***  
***Core Strategy Policy CS4***

Within the Ludlow area, the following settlements have been put forward by the local community (via parish councils) as Community Hubs;

- Clee Hill
- Onibury

#### **3.2 PROFILE OF COMMUNITY HUBS IN THE LUDLOW AREA**

#### **3.3 COMMUNITY LED PLANNING IN COMMUNITY HUBS IN THE LUDLOW AREA**

##### **Community Led Plans**

###### *Clee Hill Parish Plan (2005)*

The following have been taken from the Clee Hill Parish Plan as identified community needs and priorities:

- Increased police presence
- Affordable housing and retention of young people
- Parking
- Pedestrian crossings
- Facilities for young people
- Protection of the local environment and local character
- Litter and dog fouling
- Vehicle speeds

###### *Onibury*

No Parish Plan currently exists

##### **Local Joint Committee**

Clee Hill is located within the Ludlow and Clee Local Joint Committee Area. The following needs and priorities have been raised by the local community as part of Local Joint Committee meetings:

*Ludlow and Clee Local Joint Committee*

- Road safety, speeding and HGVs
- Rural transport and parking
- Youth opportunities and facilities
- Police and community safety
- Streetscene and litter
- Ludlow town bus routes
- Local health care provision (New Ludlow hospital)

Onibury is located within the Cravens Arms and Rural Local Joint Committee Area. The following needs and priorities have been raised by the local community as part of Local Joint Committee meetings:

*Craven Arms and Rural Local Joint Committee*

The following needs and priorities have been raised by the local community as part of Craven Arms and Rural Local Joint Committee meetings:

- Rural transport and parking
- Police and community safety
- Flooding
- Highways
- Health provision

**Other Consultations**

**Local Development Framework Site Allocations and Management of Development DPD (SAMDev) – Issues and Options (April- June 2010)**

*Caynham Parish Council representations on the SAMDev for Clee Hill*

(Representation reference no SAMDEV DPD/04IOP/002337/00001)

- A larger school
- Additional car parking
- Aesthetic improvements

*Onibury Parish Council representations on the SAMDev*

(Representation reference no SAMDEV DPD/04IOP/002420/00001)

- A49 crossing/ underpass
- Central community space

### 3.4 INFRASTRUCTURE AND INVESTMENT DELIVERY FRAMEWORK FOR COMMUNITY HUBS IN THE LUDLOW AREA

#### Clee Hill

Infrastructure or investment requirements and opportunities	Critical Priority or Key	Lead delivery partner	Other partners	Cost	Funding secured	Funding gap	Timescale for delivery	Potential funding sources	Notes
<b>Housing and cohesive, sustainable communities</b>									
Affordable Housing Provision	PRIORITY	Shropshire Council	Caynham Parish Council						The Parish Council support the development of affordable housing for local people where there is proven need.
<b>Economic investment and opportunity</b>									
<b>Social and community infrastructure</b>									
Increased Police Presence	KEY	Caynham Parish Council, West Mercia Police							The Parish Council has identified the need for greater Police presence within the Parish.
Establishment of a Neighbourhood Watch Scheme	KEY	Caynham Parish Council, West							The Parish Council support the establishment of a Neighbourhood Watch

Infrastructure or investment requirements and opportunities	Critical Priority or Key	Lead delivery partner	Other partners	Cost	Funding secured	Funding gap	Timescale for delivery	Potential funding sources	Notes
		Mercia Police							Scheme in the Parish.
<b>Environment and climate change</b>									
Street Scene Improvements		Caynham Parish Council	Shropshire Council (Waste Management)						The Parish Council has identified the need to monitor litter and dog mess in village.
<b>Transport and accessibility</b>									
Local highway improvements, traffic management, parking provision and speed and safety enhancements	KEY	Caynham Parish Council, Shropshire Council (Highways)							<p>The Parish Council has identified the need to:</p> <ul style="list-style-type: none"> <li>• Enforce the 30mph speed limit through the village of Clee Hill.</li> <li>• Consider the provision of a pelican crossing in the High Street</li> <li>• Review the current parking provision in the centre of the village and by the school in Tenbury Road.</li> <li>• Review of winter</li> </ul>

Infrastructure or investment requirements and opportunities	Critical Priority or Key	Lead delivery partner	Other partners	Cost	Funding secured	Funding gap	Timescale for delivery	Potential funding sources	Notes
									gritting and provision of salt bins. <ul style="list-style-type: none"> <li>• Consider the resurfacing of the car park area in Clee Hill.</li> </ul>

DRAFT

## 4. COMMUNITY CLUSTERS PLACE PLAN FOR THE LUDLOW AREA

### 4.1 VISION FOR COMMUNITY CLUSTERS

The vision for Community Hubs is found in the Core Strategy Policy CS4, and is as follows:

***Community Clusters are comprised of two or more smaller settlements, where the combined settlements offer a range of services contributing to a sustainable community. Community Clusters will have development that helps to rebalance rural communities by providing facilities, economic development or housing for local needs that is of a scale appropriate to the settlement.***

***Core Strategy Policy CS4***

Within the Ludlow area, no settlements have currently been put forward by the local community (via parish councils) as Community Clusters. All of the surrounding area around Ludlow and outside of the identified Community Hubs, is therefore defined as countryside (Rural Hinterland), where further development will be strictly controlled and only allowed in exceptional circumstances. The Council will, however, continue to work with the local community to identify the community benefits that can be delivered through development and there is an ongoing opportunity for communities to 'opt in' as either a Hub or Cluster, at a later stage in the Local Development Framework Plan period (2006-2026), for example through a review of local parish plans.

## 5. LUDLOW'S RURAL HINTERLAND PLACE PLAN

### 5.1 VISION FOR RURAL HINTERLAND

The vision for the Rural Hinterland is found in the Core Strategy Policy CS5, and is as follows:

***In the open countryside, new development will be strictly controlled. Development proposals on appropriate sites which maintain and enhance countryside vitality and character will be permitted where they improve the sustainability of rural communities by bringing local economic and community benefits.***

***Core Strategy Policy CS5***

Within the Ludlow locality, all areas outside Ludlow Town and the identified Community Hubs are part of the Rural Hinterland.

### 5.2 PROFILE OF THE RURAL HINTERLAND IN THE LUDLOW AREA

### 5.3 COMMUNITY LED PLANNING IN LUDLOW'S RURAL HINTERLAND

#### **Community Led Plans**

##### *Ashford Carbonell Parish Plan (2003)*

The following have been taken from the Ashford Carbonell Parish Plan as identified community needs and priorities:

- Maintenance of public areas
- No further housing development
- Transport and village traffic, particularly speed
- Parking near school
- Dog fouling
- The Village Hall
- The Parish Church
- A green Parish
- Street scene
- Sports and playground facilities
- The village school

##### *Bitterley Parish Plan (2008)*

The following have been taken from the Bitterley Parish Plan as identified community needs and priorities:

- Transport

- Road safety
- The environment
- Housing
- Health
- Leisure
- Activities for young people, particularly post 14's
- Crime and Police presence
- Transport including speeding traffic
- Street scene improvements
- Adult education and recreation classes
- Shopping
- Free view
- Broadband
- Maintenance of roads and footpaths

*Burford and Tenbury Parish Plan (2004)*

The following have been taken from the Burford and Tenbury Parish Plan as identified community needs and priorities for Burford. A review is planned this year.

- Parking
- Improvements to roads and pavements
- Improved shopping facilities
- Traffic
- Public transport
- Recreational facilities
- Improved play area
- Promotion of local facilities and events
- Improved seating

*Caynham Parish Plan (2005)*

The following have been taken from the Caynham Parish Plan as identified community needs and priorities:

- Housing/development
- Transport, road safety and speeding
- HGV
- Parking
- Litter
- Dog fouling
- Recycling
- Footpaths
- Services and facilities
- Shopping
- Social activities
- Mains sewage and gas supply
- Facilities/activities for young people
- Community safety
- Environment

*Knowbury Parish Plan (2005)*

The following have been taken from the Knowbury Parish Plan as identified community needs and priorities:

- Affordable housing
- Speeding
- Road maintenance
- Recycling
- Litter and dog fouling
- Facilities for young people

*Ludford Parish Plan (2004)*

The following have been taken from the Ludford Parish Plan as identified community needs and priorities:

- Local issues including housing and planning
- Transport and traffic including speed
- Street lighting
- Protect the rural character including supporting the conservation and preservation along the River Teme and Whitcliffe Common
- Shopping facilities
- Waste collection services
- Health care provision

*Clee Hill Parish Plan (2005)*

The following have been taken from the Clee Hill Parish Plan as identified community needs and priorities:

- Increased police presence
- Affordable housing and retention of young people
- Parking
- Pedestrian crossings
- Facilities for young people
- Protection of the local environment and local character
- Litter and dog fouling
- Vehicle speeds

*Bromfield*

No Parish Plan currently exists

*Greete*

No Parish Plan currently exists

*Hope Bagot*

No Parish Plan currently exists

*Hopton Cangeford*

No Parish Plan currently exists

*Richards Castle*

A Parish Plan steering group has been established, further updates will be provided in due course.

*Stanton Lacy*

No Parish Plan currently exists

*Whitton*

No Parish Plan currently exists

### **Local Joint Committee**

Bromfield, Ludford, Ashford Carbonell, Richards Castle, Greete, Whitton, Caynham, Hope Baggot and Bitterley are located within the Ludlow and Clee Local Joint Committee Area. The following needs and priorities have been raised by the local community as part of Local Joint Committee meetings:

#### *Ludlow and Clee Local Joint Committee*

- Road safety, speeding and HGVs
- Rural transport and parking
- Youth opportunities and facilities
- Police and community safety
- Streetscene and litter
- Ludlow town bus routes
- Local health care provision (New Ludlow hospital)

Stanton Lacy and Hopton Cangeford are located within the Cravens Arms and Rural Local Joint Committee Area. The following needs and priorities have been raised by the local community as part of Local Joint Committee meetings:

#### *Craven Arms and Rural Local Joint Committee*

The following needs and priorities have been raised by the local community as part of Craven Arms and Rural Local Joint Committee meetings:

- Rural transport and parking
- Police and community safety
- Flooding
- Highways
- Health provision

Burford is located within the Cleobury and Rural Local Joint Committee Area. The following needs and priorities have been raised by the local community as part of Local Joint Committee meetings:

#### *Cleobury and Rural Local Joint Committee*

- Road safety, speeding and HGVs
- Youth opportunities and facilities
- Police and community safety
- Housing needs
- Flooding
- Highways
- Waste
- Health care provision (especially a new doctors surgery)
- The local economy, broadband and tourism

## Other Consultations

### **Local Development Framework Core Strategy – Final Plan Publication (January-March 2010)**

*Bitterley Parish Council representations on the Core Strategy.*

(Representation reference no CORE STRATEGY/09RSUB/002326/00001/001)

- Allowance of only affordable housing to meet local need be made more flexible to allow for a mix of affordable and market housing that better reflects the variety of local needs identified.
- Parish Plan that should be acknowledged in regard of identifying local need

*Ludford Parish Council representations on the Core Strategy.*

(Representation reference no CORE STRATEGY/09RSUB/002397/00002/001)

- Concern that the Core Strategy will still enable ad hoc developments without regard to considering a detailed impact assessment of the required infrastructure both in terms of transport, impact to road users, housing, schools etc particularly if driven by other timescales and Central Government Funding.

### **Local Development Framework Site Allocations and Management of Development DPD (SAMDev) – Issues and Options Consultation (April- June 2010)**

*Bitterley Parish Council representations on the SAMDev*

(Representation reference no SAMDEV DPD/04IOP/002326/00002)

- There is a need for a bus shelter
- Modest housing development to include market housing as well as affordable
- Population needs to stay stable or rise to sustain school numbers
- Drains and flooding issues

*Richards Castle Parish Council representations on the SAMDev*

(Representation reference no SAMDEV DPD/04IOP/06771/00001)

- Improve road junction at Policemans Corner
- Develop stronger links with Orleton

### **Caynham Community Toolkit Event – 18<sup>th</sup> March 2010**

The following activities, facilities, services and infrastructure were considered to be the most important community assets by the event attendees:

Activities:

- Senior citizens groups and clubs
- Youth groups and clubs
- Children and family activities
- Sports activities

Facilities:

- Community centre/village hall
- Café/pub/restaurant
- Open spaces and play areas
- Post box

Services:

- Post office services
- Healthcare
- Shops

Infrastructure:

- Broadband speed and connectivity
- Tourism and heritage infrastructure
- Road improvements

Full information and feedback from the Caynham Toolkit event is available at:

(<http://www.shropshire.gov.uk/factsfigures.nsf/open/C6BE79E370240015802577760045C7C5>)

DRAFT

## 5.4 INFRASTRUCTURE AND INVESTMENT DELIVERY FRAMEWORK FOR LUDLOW'S RURAL HINTERLAND

### Ashford Carbonell

Infrastructure or investment requirements and opportunities	Critical Priority or Key	Lead delivery partner	Other partners	Cost	Funding secured	Funding gap	Timescale for delivery	Potential funding sources	Notes
<b>Housing and cohesive, sustainable communities</b>									
<b>Economic investment and opportunity</b>									
<b>Social and community infrastructure</b>									
Heritage of the Church	KEY	Church, Ashford Carbonell Parish Council							The Parish Council has identified the need for the fabric of the church and its surroundings to be maintained
Improvements to the Village Hall	KEY	Ashford Carbonell Parish Council							The Parish Council has identified the need a flexible up to date Village Hall including: <ul style="list-style-type: none"> <li>• A larger function area</li> <li>• A small committee room</li> <li>• A bar area</li> <li>• Indoor games</li> </ul>

Infrastructure or investment requirements and opportunities	Critical Priority or Key	Lead delivery partner	Other partners	Cost	Funding secured	Funding gap	Timescale for delivery	Potential funding sources	Notes
									facilities <ul style="list-style-type: none"> <li>• Better acoustics</li> <li>• Better car park lighting</li> <li>• Better storage facilities</li> <li>• Secure Post Office facilities</li> <li>• On-going maintenance</li> <li>• Better and larger kitchen facilities</li> <li>• Upgraded sports field facilities</li> <li>• Upgraded playground facilities</li> </ul>
<b>Environment and climate change</b>									
Street Scene Improvements	KEY	Ashford Carbonell Parish Council	Shropshire Council						The Parish Council has identified the need for tree planting around the recreation field and other areas. In addition to wild flowers and nesting boxes
Improved	KEY	Ashford	Shropshire						The Parish Council has

Infrastructure or investment requirements and opportunities	Critical Priority or Key	Lead delivery partner	Other partners	Cost	Funding secured	Funding gap	Timescale for delivery	Potential funding sources	Notes
recycling facilities		Carbonell Parish Council	Council (Waste Management)						identified the need for better recycling facilities.
<b>Transport and accessibility</b>									
Improved parking at the School	KEY	Ashford Carbonell Parish Council	Shropshire Council (Highways)						The Parish Council has identified the need for improved parking at the school
Improved public transport	KEY	Public Transport Providers	Ashford Carbonell Parish Council, Shropshire Council						The Parish Council has identified the need to improve school transport and improved village bus service. There is also the need for coordinated bus and train services at Ludlow. The Parish Council support a taxi voucher scheme.

**Bitterley**

Infrastructure or investment requirements and opportunities	Critical Priority or Key	Lead delivery partner	Other partners	Cost	Funding secured	Funding gap	Timescale for delivery	Potential funding sources	Notes
<b>Housing and cohesive, sustainable communities</b>									
<b>Economic investment and opportunity</b>									
<b>Social and community infrastructure</b>									
Provision for young people	KEY	Bitterley Parish Council, Shropshire Council							<p>The Parish Council has identified the need for more activities for the young. Including:</p> <ul style="list-style-type: none"> <li>• Provision of a youth club for 7-10 year olds and 14+</li> <li>• Setting up a car sharing scheme for outside activities</li> <li>• Creating a cycle path</li> <li>• Investigate open space and/or creating supervision for the school field to provide an</li> </ul>

Infrastructure or investment requirements and opportunities	Critical Priority or Key	Lead delivery partner	Other partners	Cost	Funding secured	Funding gap	Timescale for delivery	Potential funding sources	Notes
									area for outdoor games.
Improved Community Facilities	KEY	Bitterley Parish Council							The Parish Council support the establishment of a voluntary car sharing scheme, bringing more services (namely health) into the Parish using community facilities such as the Village Hall and a good neighbour scheme.
Increased Police Presence	KEY	Bitterley Parish Council, West Mercia Police							The Parish Council has identified the need for greater Police presence within the Parish.
Provision of Digital TV	KEY		Bitterley Parish Council, Shropshire Council						The Parish Council has identified the need for access to Freeview in the Parish.
Improved Broadband Provision	KEY	BT	Bitterley Parish Council, Shropshire Council						The Parish Council has identified the need for improved broadband provision within the Parish.

Infrastructure or investment requirements and opportunities	Critical Priority or Key	Lead delivery partner	Other partners	Cost	Funding secured	Funding gap	Timescale for delivery	Potential funding sources	Notes
<b>Environment and climate change</b>									
<b>Transport and accessibility</b>									
Develop and improve the cycle and pedestrian network	KEY	Bitterley Parish Council, Shropshire Council							The Parish Council has identified the need for improved maintenance of footpaths.
Improved parking at the school	KEY	Bitterley Parish Council	Shropshire Council (Highways)						The Parish Council has identified the need for improved parking at the school and suggested that current parking (three spaces) by Orchard Lee could be deepened to accommodate up to eight cars.
Local highway improvements, traffic management, parking provision and speed and safety enhancements	KEY	Bitterley Parish Council/ Shropshire Council  (Highways)							The Parish Council has identified the need for speeding traffic to be addressed at Angel Bank and Middleton and suggested that a speed reduction be introduced on the main road between Henley and Clee Hill. They have also stated that the lack

Infrastructure or investment requirements and opportunities	Critical Priority or Key	Lead delivery partner	Other partners	Cost	Funding secured	Funding gap	Timescale for delivery	Potential funding sources	Notes
									of footpath in Middleton is problematic
Flooding on the roads in Bitterley	KEY	Bitterley Parish Council, Landowners, Shropshire Council							The Parish Council has identified a problem with flooding of the roads in Bitterley due to the drains being too narrow or not cleared frequently enough.

### Burford

Infrastructure or investment requirements and opportunities	Critical Priority or Key	Lead delivery partner	Other partners	Cost	Funding secured	Funding gap	Timescale for delivery	Potential funding sources	Notes
<b>Housing and cohesive, sustainable communities</b>									
<b>Economic investment and opportunity</b>									
<b>Social and community infrastructure</b>									
Improved community facilities	KEY	Burford Parish Council,							The Parish Council has identified the need to investigate options

Infrastructure or investment requirements and opportunities	Critical Priority or Key	Lead delivery partner	Other partners	Cost	Funding secured	Funding gap	Timescale for delivery	Potential funding sources	Notes
		Shropshire Council  (Leisure Services)							regarding recreational facilities including using the river for leisure activities
<b>Environment and climate change</b>									
Street Scene Improvements	KEY	Burford Parish Council, Shropshire Council							The Parish Council has expressed a desire to introduce flowering shrubs/ signage, interpretation boards and picnic sites. In addition to further seating.
<b>Transport and accessibility</b>									
Improved bus services	KEY	Public Transport Providers	Burford Parish Council/ Shropshire Council						The Parish Council have identified the need for improved bus services to Shropshire, Worcestershire and Herefordshire.

## Caynham

Infrastructure or investment requirements and opportunities	Critical Priority or Key	Lead delivery partner	Other partners	Cost	Funding secured	Funding gap	Timescale for delivery	Potential funding sources	Notes
<b>Housing and cohesive, sustainable communities</b>									
Affordable Housing Provision	PRIORITY	Shropshire Council	Caynham Parish Council						The Parish Council has identified the need for limited small scale development of affordable housing for local people.
<b>Economic investment and opportunity</b>									
<b>Social and community infrastructure</b>									
<b>Environment and climate change</b>									
Introduction of New Refuse Collection Services	KEY	Caynham Parish Council/ Shropshire Council							The Parish Council has identified the need for new refuse collection facilities, to pursue additional waste site facilities in Ludlow including weekend opening hours.
<b>Transport and accessibility</b>									

Infrastructure or investment requirements and opportunities	Critical Priority or Key	Lead delivery partner	Other partners	Cost	Funding secured	Funding gap	Timescale for delivery	Potential funding sources	Notes
Local highway improvements, traffic management, parking provision and speed and safety enhancements	KEY	Caynham Parish Council, Shropshire Council  (Highways)							<p>The Parish Council has identified the need for:</p> <ul style="list-style-type: none"> <li>• A speed limit through the village with appropriate traffic calming measures in and a restriction on heavy vehicles using Caynham Road.</li> <li>• A lay-by opposite the Church and a pavement running from the Church to the Village Hall.</li> <li>• Additional car parking and street lighting in Caynham village.</li> </ul>
Develop and improve the cycle and pedestrian network	KEY	Caynham Parish Council, Shropshire							The Parish Council wish to develop a leaflet/brochure giving details of footpaths and

Infrastructure or investment requirements and opportunities	Critical Priority or Key	Lead delivery partner	Other partners	Cost	Funding secured	Funding gap	Timescale for delivery	Potential funding sources	Notes
		Council							bridleways. They have also identified the need for the to re-route or reinstate footbridges

### Knowbury

Infrastructure or investment requirements and opportunities	Critical Priority or Key	Lead delivery partner	Other partners	Cost	Funding secured	Funding gap	Timescale for delivery	Potential funding sources	Notes
<b>Housing and cohesive, sustainable communities</b>									
Affordable Housing Provision	PRIORITY	Shropshire Council							The Parish Council support the development of affordable housing for local people where there is proven need.
<b>Economic investment and opportunity</b>									
<b>Social and community infrastructure</b>									
Establish a	KEY	Caynam							The Parish Council has

Infrastructure or investment requirements and opportunities	Critical Priority or Key	Lead delivery partner	Other partners	Cost	Funding secured	Funding gap	Timescale for delivery	Potential funding sources	Notes
Neighbourhood Watch Scheme		Parish Council							indicated a high demand for a Neighbourhood Watch Scheme.
<b>Environment and climate change</b>									
Street Scene Improvements	KEY	Caynham Parish Council, Shropshire Council							The Parish Council has identified the need to monitor litter and dog mess in village.
Introduction of New Refuse Collection Facilities	KEY	Parish Council, Shropshire Council  (Waste Management)							The Parish Council has identified the need for new refuse collection facilities, to pursue additional waste site facilities in Ludlow including weekend opening hours.
<b>Transport and accessibility</b>									
Local highway improvements, traffic management, parking provision and speed and safety enhancements	KEY	Caynham Parish Council, Shropshire Council  (Highways)							The Parish Council has identified the need to: <ul style="list-style-type: none"> <li>• Review winter gritting programme and provision of salt bins</li> <li>• Road maintenance including Scott's Lane</li> </ul>

Infrastructure or investment requirements and opportunities	Critical Priority or Key	Lead delivery partner	Other partners	Cost	Funding secured	Funding gap	Timescale for delivery	Potential funding sources	Notes
									<ul style="list-style-type: none"> <li>Introduce an appropriate speed limit within the village and traffic calming measures</li> <li>Restriction of HGV's using Caynham Road</li> </ul>

**Ludford**

Infrastructure or investment requirements and opportunities	Critical Priority or Key	Lead delivery partner	Other partners	Cost	Funding secured	Funding gap	Timescale for delivery	Potential funding sources	Notes
<b>Housing and cohesive, sustainable communities</b>									
<b>Economic investment and opportunity</b>									
<b>Social and community infrastructure</b>									
Provision of open	KEY	Ludford							The Parish Council has

Infrastructure or investment requirements and opportunities	Critical Priority or Key	Lead delivery partner	Other partners	Cost	Funding secured	Funding gap	Timescale for delivery	Potential funding sources	Notes
space		Parish Council, Shropshire Council							identified the need to support the conservation and preservation of activities undertaken at Whitcliffe Common.
<b>Environment and climate change</b>									
Extension to the Conservation Area	KEY	Ludford Parish Council, Shropshire Council (Environment)							The Parish Council has identified the need to extend the conservation area around the Southern boundary of the town.
Introduction of New Waste Collection Service	KEY	Ludford Parish Council, Shropshire Council (Waste Management)							The Parish Council has identified the need for a new waste collection service which is suitable within the conservation area and for individual properties.
<b>Transport and accessibility</b>									
Develop and improve the cycle and pedestrian network	KEY	Ludford Parish Council, Shropshire Council (Highways)							The Parish Council has identified the need for the development of an additional footpath along the River Teme and to ensure footpaths and bridleways are

Infrastructure or investment requirements and opportunities	Critical Priority or Key	Lead delivery partner	Other partners	Cost	Funding secured	Funding gap	Timescale for delivery	Potential funding sources	Notes
									maintained.
Local highway improvements, traffic management, parking provision and speed and safety enhancements	KEY	Ludford Parish Council, Shropshire Council  (Highways)							The Parish Council has identified the need for: <ul style="list-style-type: none"> <li>• A weight limit on Ludford Bridge</li> </ul>

**Clee Hill**

Infrastructure or investment requirements and opportunities	Critical Priority or Key	Lead delivery partner	Other partners	Cost	Funding secured	Funding gap	Timescale for delivery	Potential funding sources	Notes
<b>Housing and cohesive, sustainable communities</b>									
Affordable Housing Provision	KEY	Shropshire Council							The Parish Council support the development of affordable housing for local people where there is proven need.
<b>Economic investment and opportunity</b>									
<b>Social and community infrastructure</b>									

Infrastructure or investment requirements and opportunities	Critical Priority or Key	Lead delivery partner	Other partners	Cost	Funding secured	Funding gap	Timescale for delivery	Potential funding sources	Notes
Increased Police Presence	KEY	Police, Parish Council							The Parish Council have identified the need for greater Police presence within the Parish.
Establishment of a Neighbourhood Watch Scheme	KEY	Parish Council							The Parish Council support the establishment of a Neighbourhood Watch Scheme in the Parish.
<b>Environment and climate change</b>									
Street Scene Improvements	KEY	Parish Council / Shropshire Council							The Parish Council have identified the need to monitor litter and dog mess in village.
<b>Transport and accessibility</b>									
Local highway improvements, traffic management, parking provision and speed and safety enhancements	KEY	Parish Council / Shropshire Council (Highways)							The Parish Council have identified the need to: <ul style="list-style-type: none"> <li>• Enforce the 30mph speed limit through the village of Clew Hill.</li> <li>• Consider the provision of a pelican crossing in the High Street</li> <li>• Review the current parking</li> </ul>

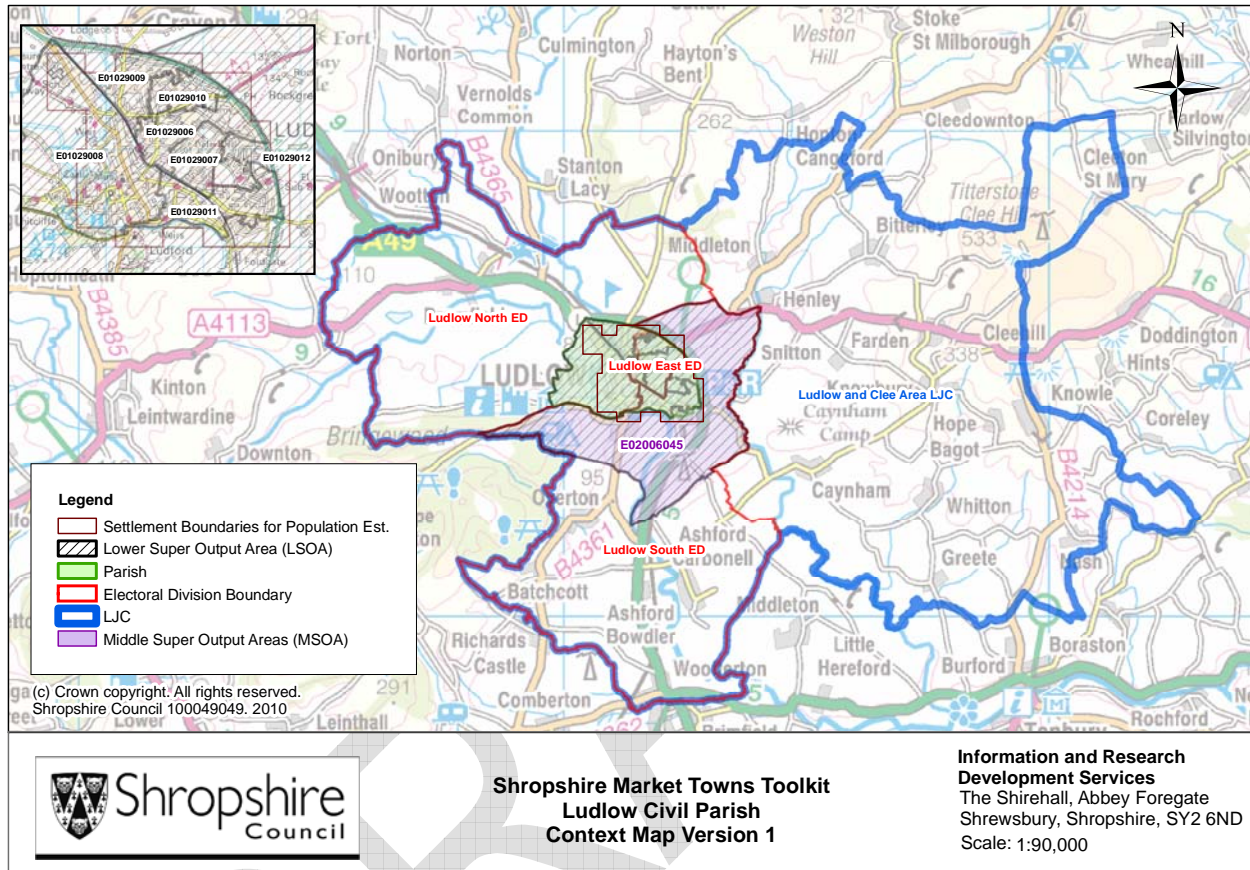
Infrastructure or investment requirements and opportunities	Critical Priority or Key	Lead delivery partner	Other partners	Cost	Funding secured	Funding gap	Timescale for delivery	Potential funding sources	Notes
									provision in the centre of the village and by the school in Tenbury Road. <ul style="list-style-type: none"> <li>• Review of winter gritting and provision of salt bins.</li> <li>• Consider the resurfacing of the car park area in Clee Hill.</li> </ul>

DRAFT

# Ludlow Market Town Profile

(Information updated in October 2010)

## Local Context Map



## Social & Demographic Characteristics

### Demographics

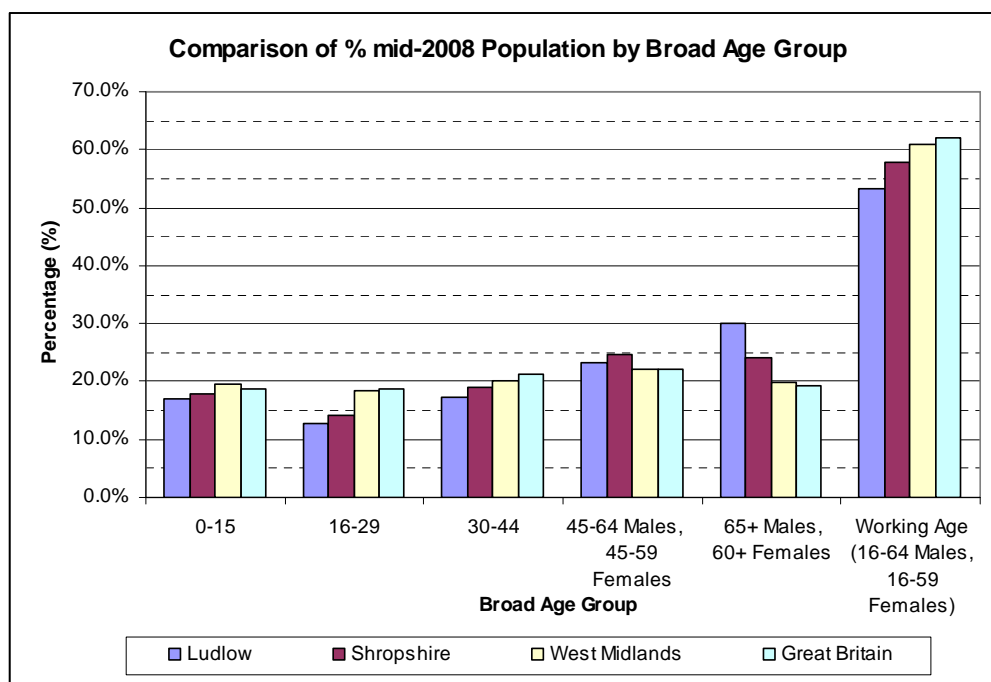
#### Mid-2008 Population Estimates

	All Ages	0-15	16-29	30-44	45-Retirement Age (45-64 Males, 45-59 Females)	Retirement Age + (65+ Males, 60+ Females)	Working Age (16-RA)
<b>Males</b>	5,000	900	700	900	1,400	1,200	2,900
<b>Females</b>	5,400	900	600	900	1,000	1,900	2,600
<b>Total</b>	10,400	1,800	1,300	1,800	2,400	3,100	5,500

Source: Mid-2008 Population Estimates for Lower Layer Super Output Areas in England and Wales by Broad Age Group and Sex (revised 2010), Office for National Statistics, © Crown Copyright 2010.

Notes: Population estimates have been made for the market town by combining the statistics of LSOAs that cover the area. Estimates have been rounded to the nearest 100.

Market town, county, regional and national comparison of mid-2008 population by Broad Age Group



Source: Mid-2008 Population Estimates (revised 2010), Office for National Statistics, © Crown Copyright 2010.

## The Economy

### Structure of the Economy 2008 (ABI, 2003 Standard Industrial Classification)

	Ludlow % of units	Shropshire % of units
1 : Agriculture and fishing (SIC A,B)	*	2.9
2 : Energy and water (SIC C,E)	*	0.2
3 : Manufacturing (SIC D)	7.3	6.7
4 : Construction (SIC F)	7.6	11.9
5 : Distribution, hotels and restaurants (SIC G,H)	37.1	29.4
6 : Transport and communications (SIC I)	3.6	4.8
7 : Banking, finance and insurance, etc (SIC J,K)	21.0	27.3
8 : Public administration, education & health (SIC L,M,N)	12.0	9.3
9 : Other services (SIC O,P,Q)	10.0	7.7
Total	100.0	100.0

Source: Annual Business Inquiry Workplace Analysis 2008, Office for National Statistics, © Crown Copyright 2010.

### Breakdown of Employment by Sector 2008 (ABI, 2003 Standard Industrial Classification)

	Ludlow % of Employees	Shropshire % of Employees
1 : Agriculture and fishing (SIC A,B)	*	0.6

2 : Energy and water (SIC C,E)	*	0.8
3 : Manufacturing (SIC D)	10.1	11.1
4 : Construction (SIC F)	4.4	6.0
5 : Distribution, hotels and restaurants (SIC G,H)	36.1	26.8
6 : Transport and communications (SIC I)	3.0	5.4
7 : Banking, finance and insurance, etc (SIC J,K)	10.0	12.2
8 : Public administration, education & health (SIC L,M,N)	29.1	31.3
9 : Other services (SIC O,P,Q)	6.7	5.9
Total	100.0	100.0

Source: Annual Business Inquiry Employee Analysis 2008, Office for National Statistics, © Crown Copyright 2010.

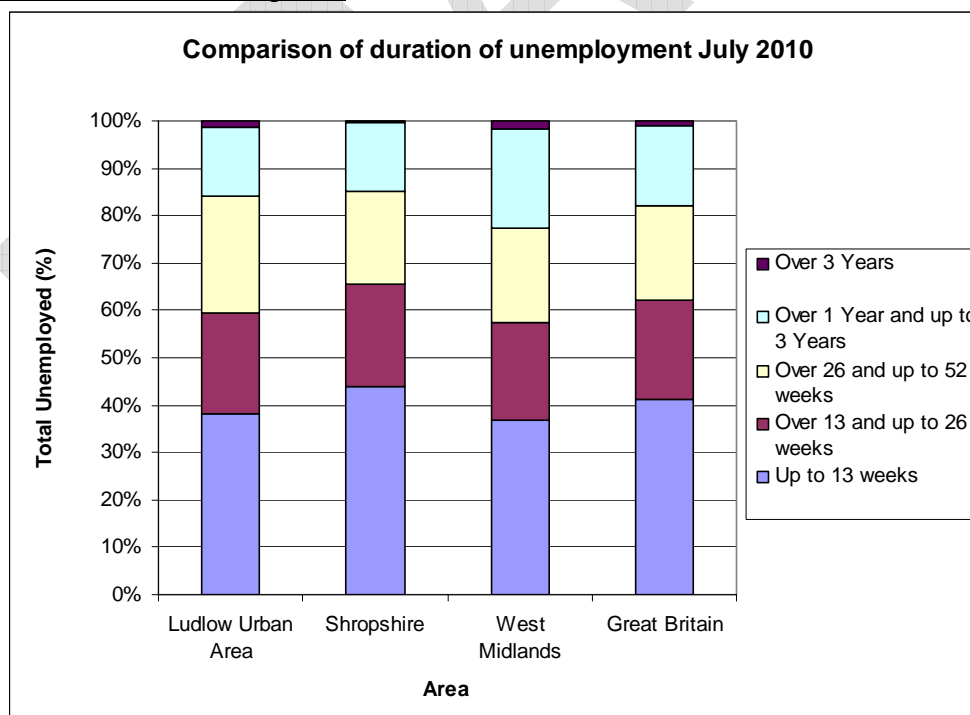
### Total unemployment number and rate for Ludlow (August 2010) compared to county, regional and national averages

	Ludlow	Shropshire	West Midlands	Great Britain
<b>Unemployment (Number)</b>	192	4,517	157,953	1,397,008
<b>Unemployment Rate (%)</b>	-	2.5	4.6	3.6

Source: Claimant Count with Rates and Proportions, Office for National Statistics, © Crown Copyright 2010.

Note: The county, regional and national rates are the number of claimants as a percentage of the mid-2009 resident population aged 16-64.

### Duration of unemployment in Ludlow (% and numbers) compared to county, regional and national figures

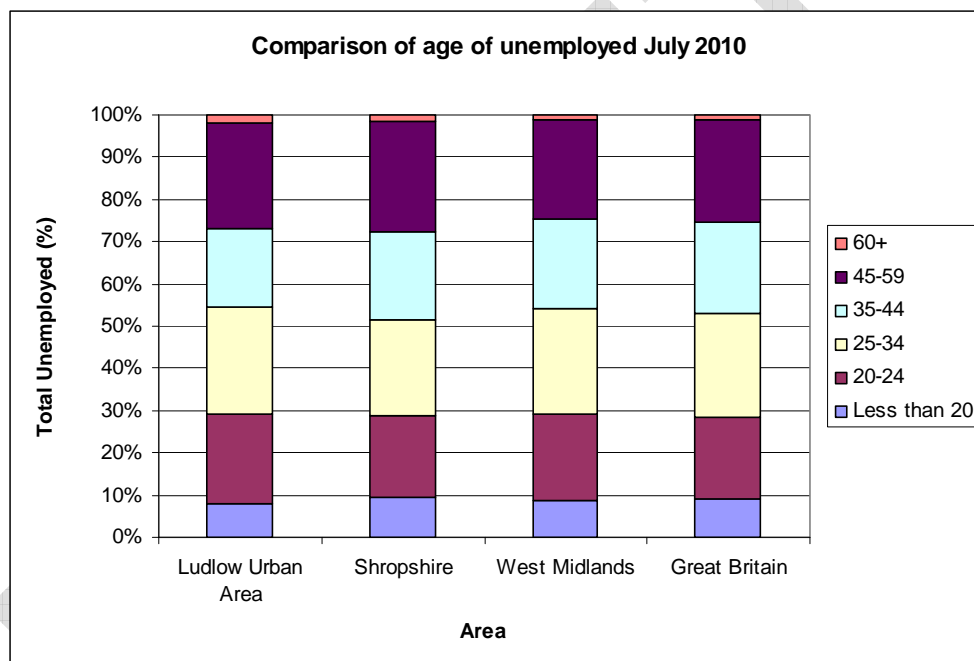


	Up to 13 weeks	Over 13 and up to 26 weeks	Over 26 and up to 52 weeks	Over 1 year and up to 3 years	Over 3 years
--	----------------	----------------------------	----------------------------	-------------------------------	--------------

	No.	%	No.	%	No.	%	No.	%	No.	%
<b>Ludlow Urban Area</b>	75	38.1	45	21.3	50	24.8	30	14.4	5	1.5
<b>Shropshire</b>	1,960	43.8	975	21.9	875	19.6	635	14.2	25	0.5
<b>West Midlands</b>	57,690	36.9	31,910	20.4	31,625	20.2	32,455	20.8	2,710	1.7
<b>Great Britain</b>	567,430	41.1	291,900	21.2	271,620	19.7	235,950	17.1	12,485	0.9

Source: Claimant Count – Age and Duration, July 2010, Office for National Statistics, © Crown Copyright 2010.

Age of unemployed in Ludlow (% and numbers) compared to county, regional and national figures



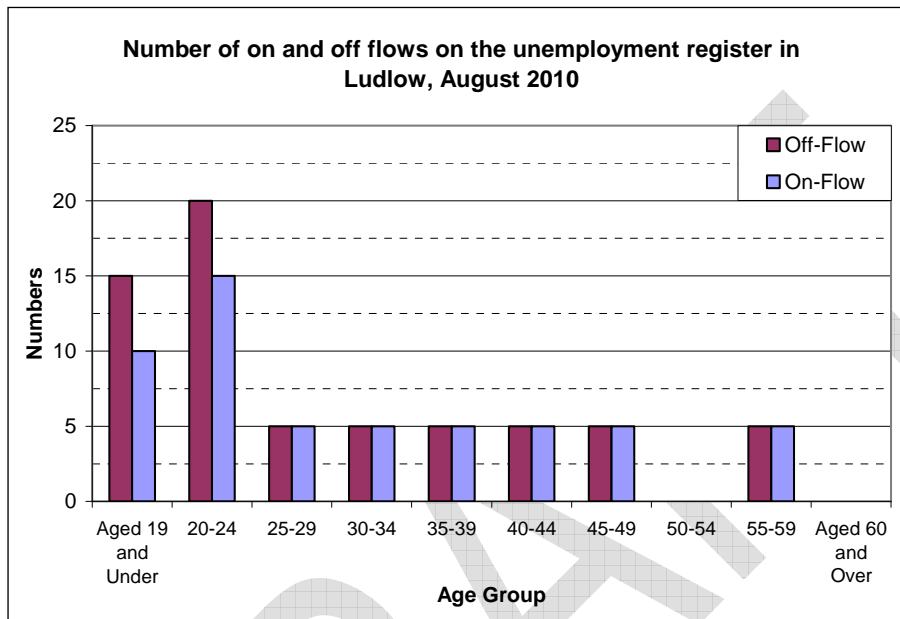
	Less than 20		20-24		25-34		35-44	
	No.	%	No.	%	No.	%	No.	%
<b>Ludlow Urban Area</b>	15	7.9	45	21.3	50	25.2	40	18.8
<b>Shropshire</b>	415	9.3	880	19.7	1,010	22.6	925	20.7
<b>West Midlands</b>	13,780	8.8	31,920	20.4	38,945	24.9	33,000	21.1
<b>Great Britain</b>	123,080	8.9	270,375	19.6	338,400	24.5	295,470	21.4

	45-59		60+	
	No.	%	No.	%
<b>Ludlow Urban</b>	50	24.8	5	2.0

Area				
<b>Shropshire</b>	1,165	26.1	75	1.7
<b>West Midlands</b>	37,115	23.7	1,635	1.0
<b>Great Britain</b>	336,805	24.4	15,255	1.1

Source: Claimant Count – Age and Duration, July 2010, Office for National Statistics, © Crown Copyright 2010.

## Unemployment Flows



Source: Claimant Flows – Age and Duration, August 2010, Office for National Statistics, © Crown Copyright 2010.

Note: Data has been rounded to the nearest 5.

## Worklessness

### Current DWP Benefit Claimants claiming out of work benefits (February 2010)

	Ludlow		Shropshire		West Midlands		Great Britain	
	No.	% (1)	No.	% (2)	No.	% (2)	No.	% (2)
<b>Job Seekers</b>	230	4.2%	5,110	3.0%	176,050	5.3%	1,525,780	4.1%
<b>Incapacity benefit/ Severe Disablement Allowance</b>	345	6.3%	8,100	4.8%	197,800	6.0%	2,166,110	5.8%
<b>Lone parents (Income Support Statistical Group)</b>	85	1.5%	1,780	1.1%	69,210	2.1%	691,980	1.9%
<b>Carers</b>	-	-	2,100	1.3%	56,320	1.7%	530,740	1.4%
<b>Others on income related benefit (Income Support Statistical Group)</b>	-	-	180	0.1%	7,230	0.2%	74,780	0.2%

<b>Out of work benefits</b>	750	13.6%	17,050	10.2%	502,370	15.3%	5,013,230	13.5%
<b>Total Claimants</b>	890	16.1%	21,090	12.6%	593,250	18.0%	5,901,000	15.9%

Source of DWP Benefit Claimant Statistics: Office for National Statistics, © Crown Copyright 2010.

Notes: Carer's Allowance data is not available for smaller areas. 'Others on income related benefit' – claimant receives other Income Support (including IS Disability Premium) or Pension Credit. Data for market town has not been included because it also contains Carers Allowance Claimants.

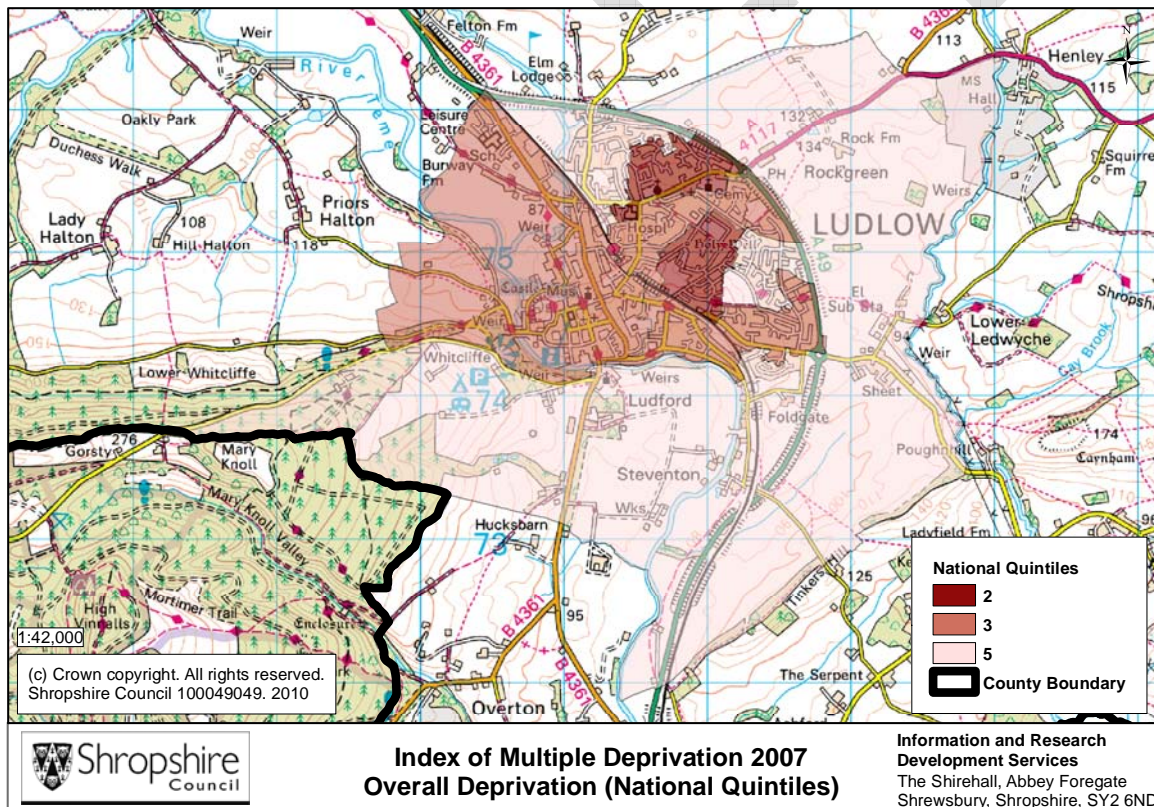
Rate (%) note: The rate is the number of claimants as a percentage of the total resident working age population (aged 16-64 males, 16-59 females).

(1) Source of population estimates (used for calculation of the Market Town rate): Mid-2008 Population Estimates for Lower Layer Super Output Areas in England and Wales by Broad Age Group and Sex (revised 2010), Office for National Statistics, © Crown Copyright 2010.

(2) Source of population estimates (used for calculation of the County, Regional and National rates): Estimated Resident Population Mid-2009 by Single Year of Age and Sex, Office for National Statistics, © Crown Copyright 2010.

## Deprivation

### Index of Multiple Deprivation 2007 - Overall Deprivation



Source: Indices of Deprivation 2007, Department for Communities and Local Government, © Crown Copyright 2010.

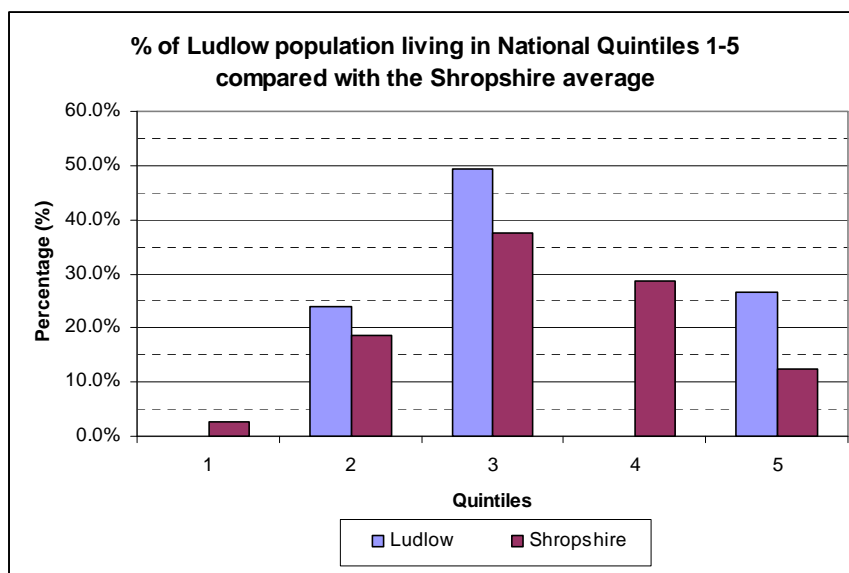
Note: There are five National Quintiles, 1=most deprived, 5=least deprived.

### Most deprived Lower Layer Super Output Area (LLSOA) in Ludlow

LLSOA Number	LLSOA Name	% Overall Population of Ludlow Living in LLSOA
E01029007	Ludlow Henley	11.4

Source: Indices of Deprivation 2007, Department for Communities and Local Government, © Crown Copyright 2010.

### % of Ludlow LLSOA population living in quintiles 1-5



Source: Indices of Deprivation 2007, Department for Communities and Local Government, © Crown Copyright 2010.

## Housing and Households

Total number, type and size of dwellings/households in Ludlow Urban Area.

### Tenure

	Owner Occupied (owned outright)	Owner occupied (owned with a mortgage or loan)	Privately rented	Rented from a Housing Association/ Registered Social Landlord	Rented from other
<b>Ludlow no.</b>	1,665	1,307	369	766	146
<b>Ludlow % total households</b>	38.2	30.0	8.5	17.6	3.4
<b>Shropshire % total households</b>	35.2	37.0	9.1	3.8	4.4

Source: Table TE01 Tenure, 2001 Census, Office for National Statistics, © Crown Copyright 2010.

### Type and Size

	Detached	Semi-detached	Terraced	Purpose built block of flats or tenement	Flats, maisonettes or apartments in commercial buildings	Part of a converted or shared house (incl bedsits)	Caravan or other mobile or temporary structure	Total Dwellings
<b>Ludlow no.</b>	1,351	1,288	1,523	242	99	84	30	4,617

<b>Ludlow % total households</b>	29.3	27.9	33.0	5.2	2.1	1.8	0.6	100.0
<b>Shropshire % total households</b>	40.7	34.0	16.4	5.1	1.2	2.0	0.6	100.0

Source: Table D01 Dwellings, 2001 Census, Office for National Statistics, © Crown Copyright 2010.

### Ludlow House prices (Land Registry 2007-2008, rounded to the nearest whole number)

Figures in £	Average (Mean) Price Paid	Median Price Paid	Lower Quartile Price Paid	Upper Quartile Price Paid
<b>2007</b>	200366	173500	135000	228950
<b>2008</b>	190633	158498	125000	214000

Source: Price Paid Data, Land Registry, © Crown Copyright 2010.

### Monthly rental cost 2009 (Rightmove dataset, rounded to the nearest whole number)

Figures in £	Average (Mean) Rent Per Month	Median Rent Per Month	Lower Quartile Rent Per Month	Upper Quartile Rent Per Month
<b>Ludlow</b>	590	525	498	610

Source: © 2010 Rightmove.co.uk

### Household income levels 2009 (Income X Dataset, rounded to the nearest whole number)

Figures in £	Average Income	Median Income	Lower Quartile Income	Upper Quartile Income
<b>Ludlow</b>	25414	23025	15782	33558

Source: Income X, © 2010 Acxiom Corporation.

## Transport & Infrastructure

### Journey to Work

	% of people aged 16-74 in employment	
	Ludlow Urban Area	Shropshire
<b>All People Aged 16-74 in Employment</b>	100.0	100.0
<b>People Who Work Mainly at or From Home</b>	10.8	13.4
<b>Underground; Metro; Light Rail; Tram</b>	0.1	0.1
<b>Train</b>	1.0	0.8
<b>Bus; Mini Bus or Coach</b>	2.4	2.6
<b>Motorcycle; Scooter; Moped</b>	0.6	0.9
<b>Driving a Car or Van</b>	51.7	59.0
<b>Passenger in a Car or Van</b>	7.3	6.3
<b>Taxi or Minicab</b>	0.4	0.3
<b>Bicycle</b>	2.0	3.5
<b>On Foot</b>	23.5	12.6

<b>Other</b>	0.3	0.6
<b>Public Transport</b>	3.5	3.5
<b>Motor Vehicle</b>	60.0	66.5

Source: Table T01 Journey to Work, 2001 Census, Office for National Statistics, © Crown Copyright 2010.

Notes:

1. Includes Train, Underground; metro; light rail; tram, bus; Mini Bus or coach
2. Includes Motorcycle; Scooter; moped, Driving a car or van, Passenger in a car or van, Taxi or minicab

## Car Ownership (Percentage of Total Households)

Percentage of cars or vans in Ludlow Urban Area.

	No car	One Car	Two cars	Three cars	Four or more cars	All cars and vans in the Area
<b>% Ludlow Total Households</b>	26.9	48.7	20.2	3.4	0.7	XXX
<b>% Shropshire Total Households</b>	17.7	44.3	29.4	6.5	2.1	XXX

Source: Table C01 Cars or Vans, 2001 Census, Office for National Statistics, © Crown Copyright 2010.

## Description of transport within Ludlow.

Transport	Number	Name (Roads/Routes/Stations etc)
<b>Main Roads</b>		A49; B4361
<b>Bus Routes</b>		Include services to Bridgnorth, Stottesdon, Cardington, Bewdley Kidderminster, Shrewsbury, Hereford, Bouldon, Cleobury Mortimer, Tenbury Wells, Knighton and Pontesbury (information from <a href="http://travelinemidlands.co.uk">travelinemidlands.co.uk</a> ).
<b>Railway Stations</b>	1	Ludlow
<b>National Cycle Network</b>	8	Include Ludlow; Route 44 (Six Castles Cycleway)
<b>All Shropshire Cycle Routes</b>	8	Include Ludlow; Route 44 (Six Castles Cycleway)

Source: Shropshire Council GIS Layers.

## Natural and historic environment

Natural and historic environment designations in Ludlow

Designation	Number	Sum of Area	Name
<b>Conservation Areas</b>	4		Ludlow (Steventon); Ludlow (Galdeford); Ludlow; Ludlow (Gravel Hill)
<b>Public Rights of Way (ROW)</b>		around 9.2 km	
<b>Millennium Greens</b>	2		Dinham Millennium Green; Gallows Bank Millennium Green
<b>SSSIs</b>	1		River Teme
<b>Long Distance</b>	2		Shropshire Way; Mortimer Trail

<b>Routes</b>			
<b>Listed Buildings</b>	422		Include The Reader's House, Churchyard, Castle Lodge and attached railings and The Butter Cross
<b>Scheduled Monuments</b>	4		Augustinian friary adjacent to the junction of Lower Galdeford and Weeping Cross Lane; St Julian's Well: a holy well in the middle of Livesey Road, 155m south west of the junction with Sandpits Road; Ludlow Town Walls and Ludlow Castle

Source: Shropshire Council GIS Layers.

DRAFT