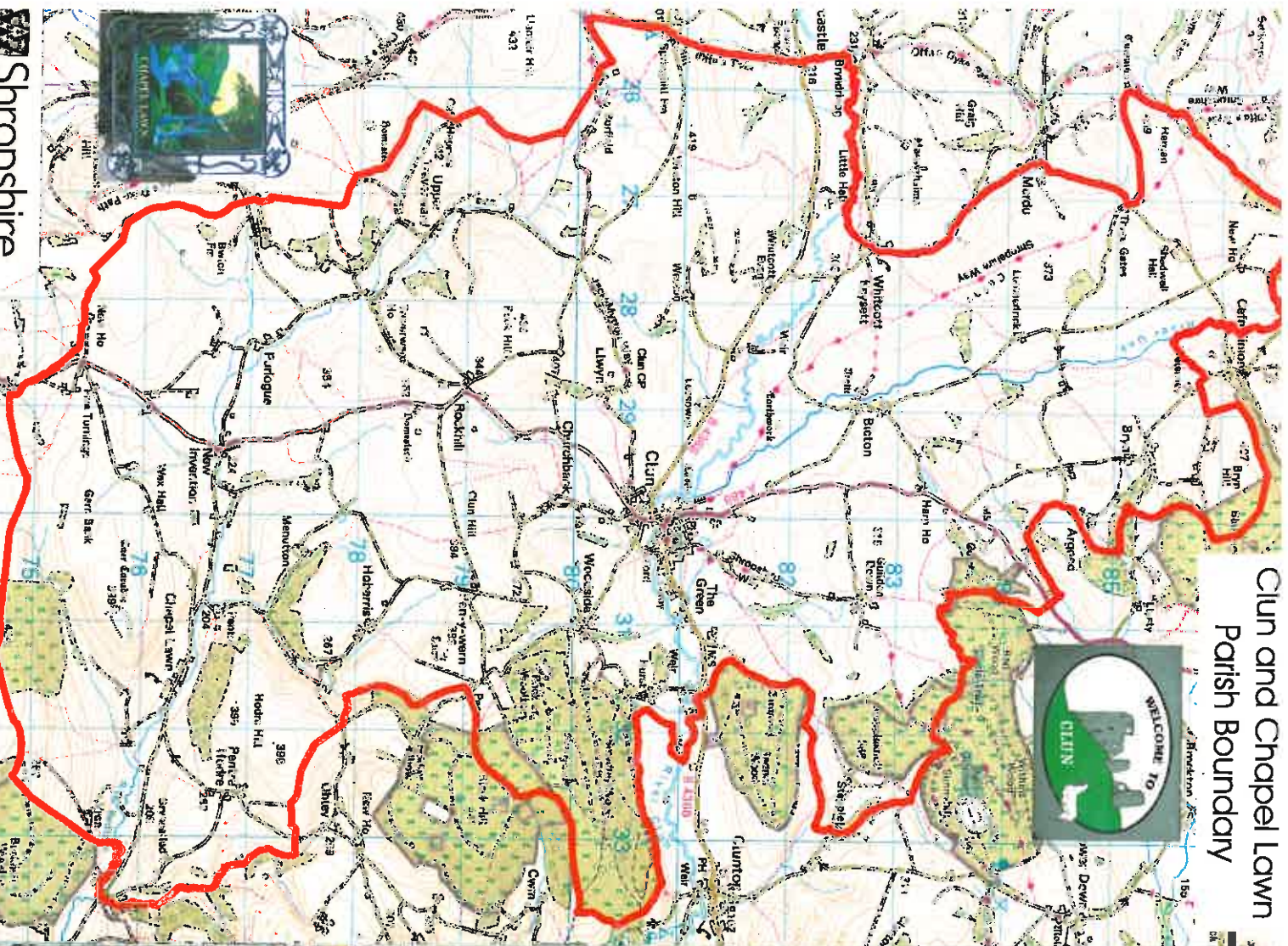


Clun and Chapel Lawn Parish Boundary



Shropshire
Council

© Crown copyright. All rights reserved Shropshire Council 100049049. Map used with permission of Shropshire Council Development Services. The Shirehall, Abbey Foregate, Shrewsbury SY2 8ND

Clun and Chapel Lawn

Parish Plan 2009

Contents

3	Preface
4	Clun and Chapel Lawn
6	Environment - landscape and footpaths
8	Environment - flooding, nuisance and rubbish
10	Heritage and tourism
12	Communications
12	Community facilities
14	Housing, energy and amenities
16	Health services
16	Policing and crime
18	Transport, travel and roads
20	Recreation and leisure
22	Children and young people
22	Employment and training
24	Making Clun and Chapel Lawn a better place to live in
24	How the Parish Plan was produced
25	Acknowledgements
26	Contacts and references



Contact	Telephone	Website
Shropshire Council		
General	0345 678 9000	www.shropshire.gov.uk
Adult and Community Education	01743 253729	www.shropshire.gov.uk/lets.nsf - Adult and Community Learning
Big Lottery Fund	01743 252271	http://www.shropshire.gov.uk - search for Big Lottery Fund
Children's Centres	01743 254293	www.shropshire.gov.uk/childscenres.nsf
Community Regeneration Officer (Frances Hall)	07837 718593	
Community Transport	01743 253313	www.shropshire.gov.uk/traveltransport.nsf - Community Transport
Countyside Access Team (incl. P3)	01743 255061	www.shropshire.gov.uk/countyside.nsf - Countyside Access and Public Rights of Way
County Training	01743 255191	www.shropshire.gov.uk/lets.nsf - County Training
Development Services	01743 252826	www.shropshire.gov.uk/shropshirecouncil.nsf - Council Structure - Development Services
Disability Services	01743 678 9005	www.shropshire.gov.uk/disability.nsf
Environmental Health	0345 678 9000	www.shropshire.gov.uk/environmentalhealth.nsf
Environmental Maintenance (dog fouling, fly tipping, litter, street scene, street lighting, toilets)	0345 678 9006	www.shropshire.gov.uk/environmentmaintenance.nsf - Street Scene (fly tipping, litter), - Dog Warden Service (dog fouling), - Public Toilets - Street Lighting
Flooding – Emergency Planning Unit	01743 252843	www.shropshire.gov.uk/emergency.nsf - Click on Public Information, then Flooding
Highway Maintenance	0345 678 9006	www.shropshire.gov.uk/hwmaint.nsf - Click on Highway Maintenance
Highways	0345678 9018	http://www.shropshire.gov.uk/hwmaint.nsf
Housing	0345 678 9005	www.shropshire.gov.uk/housing.nsf
Leisure and Culture - Laisure service - Arts and Heritage service	0345 678 9000	www.shropshire.gov.uk/sports.nsf
Local Joint Committee	01743 252252	www.shropshire.gov.uk/arts.nsf
Local Joint Committee	07837 718593	www.shropshire.gov.uk/communityworking.nsf - click on Local Joint Committees, then Local Joint Committee 13
Local Joint Committee	01743 252763	
Planning	0345 678 9004	www.shropshire.gov.uk/planning.nsf
Travel to Work		www.shropshire.gov.uk/traveltransport.nsf
Waste Management (plastics recycling, bulky waste collection)	0345 678 9007	www.shropshire.gov.uk/waste.nsf - See under Frequently asked questions
Sources of funding		
Abbey Charitable Trust	0870 608 0104	http://www.aboutabbey.com - Search on Abbey Charitable Trust
Advantage West Midlands	0121 380 3500	http://www.advantagewm.co.uk
Awards for All	08454 102030	http://www.awardsforall.org.uk/england
Community Council of Shropshire – Shropshire Community Fund Grassroots Grants	01743 360 641	http://www.shropshire-cc.org.uk - click on GrantFinder and Grassroots Grants
Government funding		http://www.governmentfunding.org.uk - Default.aspx
Heritage Lottery Fund	020 7591 6000	www.hlf.org.uk
Lloyds TSB Foundations	0750 078 7751	http://www.lloydstsbfoundations.org.uk/Pages/Welcome.aspx
Shropshire Grassroots Fund	01743 360641	http://www.shropshire-icc.org.uk/grants_and_funding/grassrootsfund
Shropshire Council - Local Joint Committee (Regeneration Office)	07837 718593	See also entry above under Shropshire Council

Contacts and references

Contact	Telephone	Website
General		
AONB (Area of Outstanding Natural Beauty) Partnership - General	01588 674084	www.shropshireinlissiaonb.co.uk
Bishop's Castle and District Community Land Trust		www.landforpeople.co.uk/projects/bishopscastle
Chapel Lawn Website		www.squirefarm.co.uk/Chapel_Lawn_Village
Clun and Chapel Lawn Parish Council (Clerk Mr C. E. Williams)	01584 874661	www.clun.org.uk/parishcouncil
Clun Chronicle (available monthly at several outlets in Clun)		
Clun and Chapel Lawn Parishioners (potential contact via The Chronicle or The Redlake, or an organized meeting)		
Clun Voluntary Car Scheme	01588 640 751	
Clun Website		www.clun.org.uk
Community Council of Shropshire	01743 360641	www.shropshire-ccc.org.uk/transport
- Wheels to Work		www.shropshire-ccc.org.uk/transport
DEFFRA:		
Areas of outstanding natural beauty	0117 372 8106	www.defra.gov.uk/wildlife-country-side/protected-areas/aonb.htm
Policy – sustainable farming		www.defra.gov.uk/farm/policy/sustain
Flooding	0845 988 1188	www.defra.gov.uk/environment/fcd
Dial-a-Ride, Bishop's Castle	01588 638350	
Good Neighbours	01588 640016	
Hereford Diocese (Communications Officer)	01432 373342	www.hereford.anglican.org
English Heritage	0870 333 1181	www.english-heritage.org.uk
Environment Agency: Flooding (Flood line, 24 hour service)	0845 988 1188	www.environment-agency.gov.uk/homeandleisure/floods
Farming and Wildlife Advisory Group	01939 262150	www.fwag.org.uk
Forestry Commission, Mortimer Forest Office	01584 877544	www.forestry.gov.uk/matches
Girl Guides (Girlguiding UK)	0207 834 6242	www.girlguiding.org.uk
Independent Living Partnership	01743 210820	www.ilp-lld.co.uk
Marches Energy Agency	01743 246007	www.mea.org.uk
Memorial Hall Committee (Chair David Britten)	01588 640352	
Natural England	03000 600 608	www.naturalengland.org.uk
NHS		
Dentists	0845 4647	www.nhs.uk - search under 'dentists'
Meadows Surgery, Clun	01588 640573	www.wmas.nhs.uk/ATYourService/PatientTransportServices/tabid/65/default.aspx
Patient Transport Service	referral required	www.shropshire.nhs.uk
Primary Care Trust, Shropshire		
Parish Paths Partnership (P3), Shropshire Council (Countryside Access Team)	01743 265061	www.shropshire.gov.uk/countryside.nsf-Outdoor recreation service - Where to volunteer - Parish Paths Partnership
Police:		
Local Police Station	0845 744 4888	
Local Police Team	01743 264777	
West Mercia Police	030003333000	www.westmercia.police.uk
The Redlake (free distribution in Chapel Lawn)	01547 530530	theredlake@squirefarm.co.uk
Royal Air Force (flying complaints)	01407 762241	www.ref.mod.uk/rat/ratley/flyinginfo/complain.cfm
Scout Association	0845 300 1818	www.scouts.org.uk
Sharenergy	07881 934183	www.sharenergy.coop
South Shropshire Housing Association	01588 676200	www.sshropsha.co.uk/home/contact.aspx
South Shropshire Youth Forum	01584 877782	www.ssyf.net
Vocifer Environmental Services Shropshire	01743 452 150	www.vociferenvironmentalservices.co.uk

The Parish Plan for Clun and Chapel Lawn

Clun and Chapel Lawn, like many other parishes, has been working towards having more say in policy decisions which affect the locality. In order to promote rural regeneration, the government, through district and county councils, is encouraging communities to have a Parish Plan adopted for each area. For this purpose, a steering group for Clun and Chapel Lawn was set up, early in 2007, to consult and draw up proposals for such a plan, to be presented to and, in the end, adopted by the Parish Council. This document is the outcome of that process: a description of the work of the group can be found in an annex to the plan, on page 24. Copies are being distributed to every household in the Parish and, in addition, the report and accompanying data will be published as a CD-Rom, being a form by which various official groups can work with the proposals: the CD-Rom will also be available to individuals, on application.

An early slogan for the steering group was 'Your Parish, Your Say'. This Parish Plan is the fruit of much consultation and discussion with people within the parish and beyond, over the past two years. It sets out, for a number of key areas, the aspirations of the community for the community. It is not a set of solutions, quick-fix or otherwise. Instead, it invites the people of the parish, through the Parish Council, to take up issues through action, in collaboration with all those involved. This engagement with issues will require commitment and patient working, not least politically, at all levels; from the local parish, through the unitary authority and statutory and voluntary agencies, to government departments. To begin this process, the plan has been presented to the Parish Council, with the recommendation that its progress be monitored annually, with a full review after five years. The major objectives identified are summarised in the final section of the plan:

'Making Clun and Chapel Lawn Parish a better place to live in'



Clun and Chapel Lawn

The parish of Clun and Chapel Lawn lies in the south-west of the Shropshire Hills Area of Outstanding Natural Beauty. The A488 road passes north and south through the parish, crossing the River Clun at the historic Clun Bridge, where it also meets one of the old roads between England and Wales. The area is full of hidden valleys and wooded hills, with many minor roads, farms and small settlements.



Clun Town was a place of importance in the middle ages, the centre of the 'Honour of Clun', the huge Marcher lordship stretching far into Wales. The ruins of the ancient castle still look down on the confluence of the rivers Clun and Unk. In the 1500s when the Marcher lordships came to an end, there was a possibility that the Honour of Clun might be incorporated into Wales.

The town itself was founded around the late 12th century, though there was an ecclesiastical parish in 1086, mentioned in Domesday Book. The early village seems to have been south of the river, around the Parish Church of St George. The irregular layout of the buildings on that side shows no evidence of deliberate planning. North of the river is a core: a small grid of streets, incorporating the Market Square, where a Norman plantation was added to the older settlement.

Clun grew modestly over the centuries and is now the sixth largest township in South Shropshire. There are features which show that it has long held high status in the area. It had a Town Hall, two Methodist chapels, a Temperance Hall and many inns and ale-houses. Trinity Hospital, an almshouse, founded in the seventeenth century, still provides housing for some of the older inhabitants of the district. Two timber yards apparently flourished on the produce of local woodlands, there were sheep markets and many small shops (one older resident remembers 35 in the streets around the market square before the second world war). Nevertheless, Clun possessed no police station, nor was it connected to the railway system. It was never the focus of a turnpike road network and the guardians of the poor law built the Clun Union workhouse elsewhere.

The first task of the group, until mid-2007, was to find out about existing policies and research, in relation to the area of the parish. The archive collected will be deposited with the final plan document.

The next step was consultation. At Clun Carnival, 2007 and a month later, after a Chapel Lawn walk, over 300 residents identified issues for the plan under the title 'Your Parish, Your Say'.

Processing the responses shaped the next (and major) area of consultation - a questionnaire for everyone aged twelve and over in the parish. This was sent out in May, 2008. The data analysis was carried out for the Steering Group by the Shropshire Community Council, and, eventually, made available in the autumn. The return from over 1,000 questionnaires was 341 - about a third. This return was quite sufficient for the group to work with, though the overall coverage of the returns also left considerable work to do. A comparison of the ages of the respondents to the 2001 census returns for the parish indicated a lack of responses from teenagers, young parents and people of working age. To fill in some of the gaps, members of the Steering Group held discussions, over the winter of 2008-9, with groups, ending with two public presentations, in Chapel Lawn and in Clun.

The final task of drawing up the Parish Plan was a co-operative effort for the whole Steering Group, with each member choosing a section of data, to focus on particular issues and identify appropriate actions. After discussion the resulting documents were then edited for publication and distribution to each household within the parish. The plan has been presented to the Parish Council, who have responsibility for its acceptance and overseeing the recommendations made. The plan will be a standing item on the agenda of the council and progress on it will be monitored each year, with a major review after five years.

The members of the Steering Group were: Christina Anderson, Robin Bidwell (chair; prior to resigning in October, 2008), John Chidlow (editor), Ryan Davies, Wayne Davies (until April, 2009), Alison Donaldson, John Garside (technical editor), Sally Lewis, Cllr Charlotte Moir (until September, 2007), Cllr Colin Pendry, Donald Pickard (secretary), Polly Smith (to 2008), Cllr Kim Smith and Dave Thomlinson. After the first year, group members took it in turns to chair meetings and ensure that decisions were followed up, with a major role being taken by Kim Smith.

Acknowledgements

The Steering Group gratefully acknowledges the help of many individuals and groups throughout the parish; in particular the support of officers of the South Shropshire District Council and Shropshire Council regeneration teams, especially Lisa Bedford, Frances Hall and Gemma Robinson; also Cath Landles and other officers of the AONB for their advice.

We also thank the many people whose photographs and artwork have been used to illustrate the plan.

Making Clun and Chapel Lawn Parish a better place to live in

It is apparent that most residents already like living in Clun and Chapel Lawn Parish but improvements can still be made. We are all part of a close-knit, friendly community, with a healthy mix of some whose families have lived here for generations and others who have chosen to move here more recently.

Maintaining and enhancing the quality of our environment depends upon those people who manage the land and our historic buildings, who must be supported.

Many of the advantages we enjoy are described in this plan, as are the difficulties of living in our rural area. The drawbacks include problems with flooding, the possible loss of some community facilities, the volume of HGV traffic through the town, speeding vehicles and existing and potential future difficulties with TV & radio reception, slow broadband speed and poor telephone coverage.

However, the major issues to be addressed are the shortage of affordable housing and the need to attract more local employment, both being essential in order to allow our younger people the option of remaining in the district. Also, there is a need for the provision of public transport, sufficient to allow access to facilities and services not available in the immediate locality and, preferably, to enable travel to places of work or education.

Some other shortcomings relate to pedestrian safety and the need to expand and improve recreational and leisure opportunities, particularly for teenagers.

We should not ignore other aspirations identified, such as the sale of local products and the establishment of community energy generation projects.

Improvements will not happen just because we wish them to - commitment and effort by many people will be required, so if anyone is prepared to 'do their bit', do please come forward and volunteer to help out - it will be greatly appreciated.

To do so, please, in the first instance, contact the Parish Clerk, Mr Eric Williams, Tel. 01584 813255 or e-mail, clunpcc@gmail.com

How the Parish Plan was produced

The group was set up following a public meeting in February, 2007. From the original twelve volunteers (plus four councillors) the active membership settled at ten, meeting monthly. Over two and a half years, the group members contributed a total of over 1,000 hours of their leisure time.

The brief was to focus on a number of topics including: Amenities, Communications, Community Facilities, Demographics, Education, Employment, Environment, Health, Heritage, Housing, Leisure, Policing, Services, Transport and Young People. For those which had most relevance to the parish, the final plan was to include recommendations for action.

Today, a church and a chapel, two community halls, a Primary School and a Post Office (within a thriving supermarket), a handful of other shops and two public houses still remain. Though proud to be called a town, Clun is far from urban. As well as farming, there is a variety of occupations, with a few small workshops and factory units and some home working. Tourism also comprises a significant sector of the local economy.

Chapel Lawn, together with some small townships, is the southern ward of the parish. Geographically, it is dominated by the Iron Age hill fort of Caer Caradoc and the ancient sessile oak plantation of Bynnedin Wood. Economically, the ward comprises a small number of farms, together with quite a few successful small businesses, many of them arts and crafts related. The importance of tourism in this area is growing, due partly to its popularity with walkers, and several properties now offer holiday accommodation. There is a sprinkling of retired people within the total population of approximately 160 but very few children. Chapel Lawn has its own Parish Church, a thriving and well-supported Village Hall but, sadly, no inns or shops.



The Parish as a whole is lively and active, with many groups and societies and a notable record in charitable fund-raising. There are two main celebrations drawing people from a wide area. The Clun Carnival and Show, now well over 100 years old, takes place at the beginning of August and, of more recent origin, the Green Man Festival is in May where, in a custom said to date back centuries, the Green Man of Clun is confronted by the Ice Queen, in the Battle on the Bridge.

Maintaining this life and the communities in the parish is now a major challenge. In the 2001 census the population of the whole 22,000 acre parish was 1,084, about half of whom lived in Clun itself. (In 1901 the population was double that of 2001 and in a similar proportion). The legacy of the combination of history and geography, briefly set out here, is given substance in the issues identified in the findings and recommendations of this Parish Plan.

Environment

Landscape

The landscape is very important to the people of Clun and Chapel Lawn. They greatly value the trees, hedgerows, fields, ponds, rivers and streams of the area, together with the old stone buildings such as churches, boundary walls and bridges and ancient features such as hill forts, old roadways, bridleways and footpaths. They also appreciate the landscape, views of the hills and upland moors, the native woodland and roadside verges. Four in five of those responding to the questionnaire wanted the landscape to be protected and maintained. There was a wish for less frequent and severe cutting of hedges and more thorough ditching to reduce flooding. Some people wanted fewer electricity pylons and others no more modern farm buildings, whilst others did not want the landscape to become 'precious'.

In Clun town there are a number of public spaces where people can walk and enjoy the landscape: the castle grounds and the river field, the Memorial Hall fields, Waterloo and the footpaths.

The question regarding the future of the old Clun Pool area, which lies within land owned by the Clun Memorial Hall and Playing Fields Charity, produced a response from over nine out of ten of those who completed the questionnaire. There was no clear indication as to what might be done, with suggestions made to restore it as a pool, manage it as a natural area, develop it in some other way or to take no action at all. For the first three of these, the community would need to reach a consensus and then work together to overcome the legal, financial, physical and maintenance challenges involved. That said, if such a consensus should be achieved, the area could, eventually, prove to be an asset for the benefit of residents and visitors alike.

There were also some aspirations for additional public spaces which are currently privately owned, namely Clun Glebe and The Green.

Footpaths

55% of people use the footpaths regularly and 36% occasionally. Over 80% felt that the maintenance of footpaths was either excellent or adequate. Nearly half said there were enough suitable dog walking areas, whilst 10% said there were not.

Actions

Better bus system
'Wheels to work'
Funded taxi/mimbus

Improved access to information
(including via local websites)
(See also under 'Recreation and leisure')

Examine possibility of fitness classes while children are at 'toddlers'
Make use of other early learning facilities available in the area
Promote the Play Area and other outdoor facilities

Consider forming a Club based at Hightown Community Room
Organise a Sports Club for teenagers only
Complete the Memorial Hall biking area
Construct a larger climbing wall
Improve the ball court
Investigate possible venues
Establish if any interest

Actions

Examine options for public transport scheduling

Identify extent of the problem

Interested parties and contacts

Shropshire Council
Clun Parish Council
South Shropshire Youth Forum
Community Council of Shropshire - Wheels to work

Clun Parish Council website

Clun Parish Council
Memorial Hall Committee
Shropshire Council - Children's Centres
Clun Parish Council

St George's Church
Memorial Hall Committee and
Clun Sports Club

South Shropshire Youth Forum/Youth Bus
Scout Association, Girl Guides Association

Interested parties and contacts

Shropshire Council - County Training
'Wheels to work'
Clun Parish Council

Shropshire Council, Clun Parish Council
Business Link, Job Centres Plus

Children and young people

The questionnaire asked about facilities for young people and inquired if youth provision should be supplied by the parish. Clun Young Farmers' Club members were consulted in a separate exercise, as were young mothers at Clun Parent and Toddler Group.

Clun's teenagers were interviewed by the youth worker at Bishop's Castle Community College. It is probably fair to say that the group who were under-represented in the consultation were primary school children.

The students at the college generally liked living in Clun but sometimes found it a little too quiet, although, when answering another question, most said that they would not wish to see Clun become a larger town through increased development.

Most are concerned about the lack of youth activity facilities and do not consider Clun to be 'teen friendly' but a place for families with young children and for retired people. Many believe that they will leave the area following their education, in order to find suitable employment, though the majority would prefer to remain, if possible.

Employment and training

Employment in Clun and Chapel Lawn appears divided equally between the employed and self-employed. There are no large employers and small businesses predominate. Whilst in a rural area, agriculture might have been expected to be a major activity, it accounts for only 17% of the economy with the service sector, including retail and leisure, being the major area of employment with 50%. The public sector includes 26% of the active workforce. In Chapel Lawn, over half the population run their own businesses. The Parish enjoys very low unemployment with fewer than 2% of the economically

Issues

Travelling
To work, school, college and to activities out of the local area (e.g. Swimming, Paintballing, Ice Rink etc.)

Work opportunities
Apprenticeships
Training

Young people

Under 5s:
Parenting support

Only one toddlers' session per week

Primary School age:

Teenagers:
Youth Club
Discos
Sports facilities

Teen Cafe
Scouts & Guides

active seeking work. A significant proportion (42%) of the questionnaire responders were retired. 54% of the economically active worked at or near their homes, whilst 46% needed to travel. Less than 3% used public transport.

Issues

Transport
Nearly half the work/training required access to personal transport, public transport was not an option to work or train

Recruitment
With low levels of unemployment businesses found difficulty in recruiting suitable staff



Actions

Increased advice and help with grants and schemas

More litter bins
Local 'pick up litter' walks

Half of Bury Ditches and Radnor Wood are planned to be returned to native trees, Black Hill will be 95% replanted with conifers

Possibly to form a working group to discuss a way forward

Leaflet for landowners showing Shropshire Council cutting policies should be more widely available

Information about local walks is already widely available in Clun but could possibly be accessed by additional means
The Hurst to Waterloo is a possible new route

Paths are presently maintained by the Parish Paths Partnership (P3) - a group of local volunteers

Information needed: leaflets about farmers' responsibilities to be made available

Interested parties and contacts

AONB Partnership
Farming and Wildlife Advisory Group
Natural England

Shropshire Council - Environmental Maintenance Litter and Street Scene
Forestry Commission - Mortimer Forest Office

Townspeople, Memorial Hall Committee
Parish Council, Hereford Diocese
Shropshire Council

Shropshire Council -
Highway Maintenance

Clun and Chapel Lawn websites
Clun Chronicle, *The Redlake*
Booklets and maps in Clun shops
Shropshire Council
Parish Paths Partnership (P3)
Shropshire Council - Countryside Access team
Parish Paths Partnership (P3)

AONB (e.g. 'Farmers Den')
DEFRA - Policy - sustainable farming

Environment

Flooding

Two in five people were affected by flooding and about half of these stated that it was mostly their travel and access that was affected. Some people's homes were affected by flooding (7%), whilst others' gardens and land were flooded (11%).

Nuisance and rubbish

About one third of people were not concerned by the problem of dog fouling but about half were. 82% said there should be dog-free areas where children play. Most people were not affected by industrial and agricultural activities. One in five said they were disturbed by noise: aircraft, vehicles, people outside pubs, children and barking dogs. One in eight found street lighting to be a problem, either too much or too little, whilst 73% found it acceptable.

Over 90% of people use the kerbside collection for recycled rubbish, 64% compost at home. Around nine in ten use the local recycling facilities in nearby towns. 60% found recycling facilities satisfactory but eagerly anticipated plastics collection at the kerbside. Over 70% wanted an occasional supervised bulky waste point and a small number wanted a local recycling point. One in eight people found the illegal dumping of rubbish a problem.



Issues

Flooding

Keep ditches and culverts clear

Tree planting / cutting to assist with land drainage and to aid flood prevention

Nuisance and rubbish

Noise from military aircraft and pollution / noise from civil aircraft

Preventing / reducing dog-fouling

Reduce fly-tipping

Occasional supervised bulky waste skip wanted. Most Clun people chose the Memorial Hall as a possible site but others preferred the Bridge car park and/or Clun Industrial Estate Chapel Lawn residents preferred a local site

Plastic waste recycling at kerbside

Street lighting either too intrusive or inadequate



Actions

Identify the demand for more fitness classes/clubs and provision for adult teams (via the *Clun Chronicle & The Redlake*). If sufficient, seek potential organisers for the former and discuss relevant aspects of the latter with the Hall Committee. Publicise the fact that wall climbing (for children) and tennis (within an existing club or independently) are already available in Clun, and that walking groups are well advertised within the *Chronicle*. Examine the demand for, and possibility of, organised group transport to a swimming pool and organised weekend family activities

Educational classes: identify potential support for such classes and those with skills willing to teach

Recreational activities: identify demand and potential leaders

Set up a working group to identify the demand and possible funding and to approach fund-providers for fitness, recreational and educational classes

Identify potential new locations and design. Seek approval for sites and design within parish

Seek advice / permission / funding



Interested parties and contacts

Consult/possible funding:
Memorial Hall Committee
Shropshire Council - Leisure & Culture,
Community Council of Shropshire -
Grassroots Fund
Local Joint Committee
Awards for All

Shropshire Council - Adult & Community Education

Persons willing to teach/lead

Possible funding:

Heritage Lottery Fund, Abbey Charitable

Trust, Local Joint Committee

Working group to identify other potential sources of funding

Advice/permission/possible funding:
Clun Parish Council,

Shropshire Council - Streetscene

Recreation and leisure

Clun is presently well served for picnic, recreational, play areas and public spaces - most people (80 to 90%) found these to be adequate or excellent. Parishioners take their exercise very seriously; 18 forms of exercise were mentioned, with walking the most popular, enjoyed by 80%. Of those who walked for exercise, around one in six walked with an organised local walking group. The majority (90%) were happy with facilities for exercise within the parish but there were some requests for further provision. Many people wanted more day and evening activities for all ages; e.g. classes, talks, keep fit or similar, dancing, music and craft.

One in six thought the provision of benches in Clun was inadequate; some said more were needed, others, that a different design to those currently at the Memorial Hall might be preferable.



Issues

Exercise

Requests relevant to the Memorial Hall

A larger pitch suitable for adult teams
Changing rooms

More fitness classes / clubs

Modest gym facilities
Tennis and Croquet

Other requests:

A swimming pool (recognised to be unlikely)

Alternative sports (e.g. skate boarding, wall climbing)

Activities should include young people and families

More advertising of walking groups

Organised weekend family walking-groups

Activities

Parishioners would like a greater range of activities (both recreational and educational) on different days of the week and times of the day (some out of working hours)

The provision of a crèche would be helpful

Benches

More benches of a more comfortable design were sought - some locations were suggested



Actions

Request a maintenance programme for the Parish

Ask for lengthsmen to be provided

Request to DEFRA

Refer to Shropshire Council and Royal Air Force

Seek advice from Shropshire Council

Seek advice from Shropshire Council

Consultator with people of Clun and Chapel Lawn

Interested parties and contacts

Environment Agency - houses, gardens and land (Flooding)
Shropshire Council - roads (Flooding)
Clun Parish Council
DEFRA - Flooding

Shropshire Council
Royal Air Force
Shropshire Council - Environmental Maintenance - Dog Warden Service
Shropshire Council - Environmental Maintenance - Street Scene
Shropshire Council - Waste management - Bulky waste

Also, for general waste-related issues
Veolia Environmental Services

Planned for Shropshire by 2010
Look at individual cases (shields or reflectors)
Alternative to sodium lights
Guidelines on security lighting

Shropshire Council - Waste management
Shropshire Council -
Environmental Maintenance - Street Lighting



Heritage & tourism



Issues
It is clear that the majority of residents (over 85% of those who responded to the questionnaire) greatly appreciate the long history of the area with its many ancient buildings, structures and features

Lack of revenue support for Clun Museum following recent major capital improvements

Are there enough places for both visitors and locals to obtain refreshments?

Three quarters of respondents felt that there were, though comments were made regarding irregular opening hours on occasions

Over half of all respondents agreed that there should be cycle racks provided for locals and visitors

Communications

Clun and Chapel Lawn are very close-knit and lively communities. Information about activities and events is readily available through the remarkably well-supported local publications, the *Clun Chronicle* and *The Redlake* (with readerships estimated at over 90% and nearly 70%, respectively).

Notices and word-of-mouth are also important for nearly 70%. On the other hand, the Clun and Chapel Lawn websites are poorly used (estimated at 7% for Clun and 28% for Chapel Lawn).

The poor state of several notice boards was remarked upon.



10



Actions

Options include

Downgrade the A488 to a 'B' road

Monitor the effect of advisory length signs on approach roads

Make length limit signs mandatory

Contact 'satnav' companies to point out problems

Construct Clun by-pass (deemed unlikely)

Support continued pressure to regain and retain adequate services.

Monitor to see if there is a real problem
If so, reactive 'slow' speed signs on the four approaches to the town were preferred
Extend certain 40 & 30 mph restriction areas and introduce a 20 mph limit in the town centre

Consider other parking restrictions
Encourage visitor parking at the Memorial Hall car park, possibly with the provision of toilets on site
Improve signs indicating parking locations

Examine whether improvements are feasible
Seek advice on permissibility and funding



Interested parties and contacts

Shropshire Council - Highways

Shropshire Council
Clun Parish Council

Clun Parish Council
Shropshire Council - Highways

Clun Parish Council

Clun Parish Council
Shropshire Council - Disability Services,
Highway Maintenance
Independent Living Partnership



19

Transport, travel and roads

Clun is positioned on one of only two 'A' roads running north-south through the county! The constraints of the narrow square and historic Clun Bridge affect the ability of traffic, especially HGVs to pass through the town. Damage to the ancient bridge has occurred frequently, resulting in delays to traffic and significant costs of repair. Speeding on the approaches to the town was perceived to be a problem with around half of residents being concerned by the situation. The narrow roads of the town and lack of off-street parking frequently cause bottlenecks, as traffic attempts to negotiate the streets and parked vehicles.

Clun has limited regular public transport between Bishop's Castle, Craven Arms, Ludlow and Newtown. In addition, a passenger responsive bus system is available for occasional journeys. Most people were aware of the public transport system, with some 25% having used it. However, only 8% of responders were able to use public transport for their journeys to work or school.



Issues

Traffic

Traffic through the Town Square and over Clun Bridge is a problem, especially with HGVs

Public Transport

The need to maintain regular scheduled bus services

Speeding

178 out of 340 responders were concerned by speeding and 45 affected by it

Parking

Parking in Clun was a problem for a third of residents but a majority opposed 'residents only' parking in certain streets

Access for pushchairs and less able people

Certain areas have difficult, dangerous or even absent, pedestrian walkways



Actions

To continue to ensure that those responsible maintain their properties in a good state of repair

Possibly arrange fund raising events, as the income from admission charges and sales is insufficient

Not applicable

Interested parties and contacts

Clun Castle - English Heritage
Clun Bridge - Shropshire Council
St George's Church - Parochial Church Council

Trinity Almshouses Trust
Clun Town Hall/Museum,

Clun Parish Council & Museum Trustees

Clun Parish Council & Museum Trustees

Bridge Cafe
Maltings Cafe
Sun Inn
White Horse Inn

Parish Council
Shropshire Council

The Parish Council should consider such provision and possible sites. Nine out of ten people suggested either of the two existing car parks with a small majority preferring that near to Clun Bridge

Actions

Identify possible locations, designs, costs, funding. Seek approval for intended changes locally within the parish. Approach potential partners for permission/funding

Form working group (wide age range) to consult with existing webmasters and consider whether these issues are possible via the current websites.
look at available relevant funding/training. identify approach best suited to the issues

Seek views of producers of existing publications

Interested parties and contacts

Permission
Shropshire Council - Development Services
Funding: Shropshire Council - Local Joint Committee, Parish Council

Consult Clun & Chapel Lawn webmasters
Possible funding
Shropshire Council, 'Awards for All', Government Funding, Advantage West Midlands, Funding via (e.g.) Big Lottery Fund (Shropshire Council)

Possible funding:
Shropshire Council - Local Joint Committee
Community Council, Grassroots Fund, Clun Parish Council
Seek funding advice from Broadsheep, Shropshire Council - Press Officer

Community facilities

Clun has a primary school, two churches and two public halls. Where services are available, i.e. butchers, doctor and dispensary, florist, garage, grocers, hairdresser, hardware store, newsagent and post office, they are well used; banks, dentists and other health services involve travel to Bishop's Castle, Craven Arms, Knighton, Ludlow or even further.

Keeping what we have

Most respondents would be very concerned if we were to lose our church or chapel (67%), community halls, school and post office (91%) and, most particularly, The Meadows Surgery.

Pubs and Cafés

Recent events have shown how easy it would be to lose one of our two remaining pubs (and how we missed 'The Sun' while it was closed for six months).

Cafés are important too - particularly to visitors who may need refreshments at any time of day.

Toilets

One third of respondents wanted additional toilets, with the preferred location near to the Memorial Hall - a location that might encourage those visiting Clun for a day to use this car park rather than the smaller Bridge Car Park (see also 'Transport, travel and roads').

Local produce

82% grow their own vegetables, 56% would like more allotments, 86% would like to buy local produce more easily. 55% favour a local market of some kind.



Issues

Risk of loss of facilities and services

Allotments shortage

Local produce sales

Toilets - Additional toilets were sought - possibly of a different design to those at the Bridge Car Park

Access to information about health care (including mental health and social services support) may not be readily available to all. Although the NHS provides general information on the web, this may not be easy for all to access or comprehend. The Meadows Surgery is willing to act as the first point of contact for any general queries regarding access to health, social or mental health services, or medical transport.

The Primary Care Trust at Shrewsbury will also provide information on how to access services.

Actions

Routine visits: contact relevant bodies to determine whether better provision might be possible

Emergency visits: identify procedure for obtaining transport in the case of an emergency that would not merit an ambulance

Publicise findings (*Clun Chronicle & The Redlake*)

Publicise method of locating NHS dentist

Potential transport

Good Neighbours, Dial-a-Ride, NHS Patient Transport Service (medical referral required),

Shropshire Council - Community Transport, Clun Voluntary Car Scheme

NHS current listing with phone numbers of NHS dentists is available

Crime reduction

38% of respondents would like a greater police presence, 28% better consultation between people and the police and 23% to see stronger action taken in respect of

problems caused by illegal drug use and excessive alcohol consumption. Only 11% wanted improved street lighting.

Actions

Liaison with local police and neighbourhood watch

(How do our data compare with theirs?)

Establish what is the 'official' view of our concerns

In terms of 'social' problems e.g. noise, consider community solutions

Interested parties and contacts

West Mercia Constabulary
Local police team
(based at Bishop's Castle)

Local police team

Health services

Although the great majority felt able to access services provided by the NHS and Social Services, there was concern regarding the provision of NHS dentists and assistance with transport to hospital. The high quality of service provided by the local surgeries was acknowledged and appreciated. Similar findings were reported in the more extensive 2008 Patient Survey with, for example, satisfaction ratings of 90-100% for GP care, reception staff and access to services for the Meadows Surgery at Clun - figures that were in every case higher than the Shropshire average.

The Meadows Surgery has recently been extended to provide more dispensary, administrative and consulting space, as well as a disabled parking slot.



Issues

Transport to hospital

Difficulty obtaining transport for routine, pre-booked or relatively minor emergency visits. Problem compounded by the uncertainty of the maintenance of regular scheduled bus services from Clun

NHS dentists

Poor provision within reasonable distance

Policing and crime

Police coverage and personal safety

71% of respondents thought that police coverage was 'good' (11%), or 'reasonable' (60%), while 29% thought it 'poor'. Only 5% felt unsafe in the parish. No single reason for feeling unsafe was outstanding but evenings, darkness and fast traffic were most mentioned.

Crime

Clun and Chapel Lawn suffer little crime and people are generally more concerned than their experiences would suggest; about three times as many people are concerned about criminal damage and car crime as have experienced either. For illegal drug use, the ratio is thirty times.

Particular problems: e.g. drink, drugs, noise, speeding



Actions

Awareness of financial, administrative and political pressures on our facilities. Action to protect them without delay when deemed necessary

Investigate demand for more allotments, seek land if required

Co-ordinate local action

Develop pilot project

Evaluate feasibility and approval within parish if appropriate



Interested parties and contacts

NHS, Post Office, both Churches, Marston's Pub Company ('The Sun'), 'White Horse Inn' landlord, café owners and shop owners

Clun Parish Council

Clun Parish Council

Advice

Shropshire Council -

Environmental Maintenance - toilets

Housing, energy and amenities

Housing

33 respondents (9% of the total) had someone in their household who is likely to need re-housing in the parish in the next five years. In addition it is likely that some households that did not complete survey forms also contain one or more persons in need of re-housing. Implication: further housing needs to be built. There was substantial support for various forms of affordable housing / housing for local people to buy or rent but very little for open market housing. Whilst a significant minority don't wish to see any new housing in the parish (regardless of tenure), they are outweighed nearly five to two by those who wish to see more affordable rented homes being provided.

Community energy project

Nearly 70% would support a community energy project but some were against wind farms.

Amenities

Reflecting the remote rural nature of the parish, many households lacked amenities. Problems with electricity supply and phones. 85% said their electricity supply was reliable. Others commented that things had only improved in recent times. Nonetheless, improvements are still needed. Poor or non-existent TV and radio reception was a common problem. Over half of respondents were not prepared for the digital switchover. Over 60% had broadband internet. Difficulties with both landline and mobile phones affected businesses. 67% had mobile phone coverage but Chapel Lawn was described as a 'black hole' in this respect.



Actions

Make more widely known the need for affordable housing
Identify suitable land on which to build and encourage landowners to make sites available

Parish council possibly to make contact with the support network for interested parties in Shropshire, Herefordshire and Worcestershire, which has recently been established

Keep all informed of progress and monitor effectiveness of the new digital TV service
Register an objection to replacement of analogue radio signals with only DAB radio
An informative article has been published in the *Ciun Chronicle*
Further disseminate information
Monitor performance of the new service
Make representations to providers and BT

Make representations to providers and BT
Businesses may choose to pay for better connections

Make representations to providers



Issues

Housing

Shortage of affordable housing to buy or rent for local people

Energy

Desire for community-owned renewable energy provision

Amenities

Poor or non-existent TV and radio reception is a common problem but digital reception is on its way
Over half of local people are not prepared for the digital switchover.

Lack of mobile phone coverage
Some problems with landline connections
Broadband deficiencies
(lack of availability, too slow)

Unreliable electricity supply still affects some residents and businesses



Interested parties and contacts

Shropshire Council - Housing
Shropshire Council - Planning
South Shropshire Housing Association
Bishop's Castle and District - Community Land Trust
Local landowners

Sharenergy - Project Manager

Also, for energy-related issues:
Marches Energy Agency

Ciun Parish Council
Shropshire Council

Ciun Parish Council
Shropshire Council

Ciun Parish Council and Shropshire Council

Ciun Parish Council and Shropshire Council